



Hillside | Chedgrave | Norwich | NR14 6HZ

Guide Price £300,000

DURRANTS
SINCE 1853

Key features

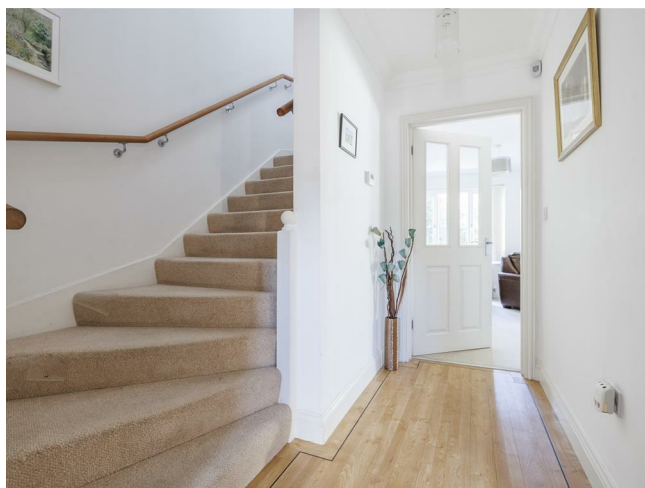
- Deceptively spacious end terrace townhouse
- Three double bedrooms
- Large lounge/Diner with doors leading to the rear gardens
- Two parking spaces
- Popular village location with good transport links to the city
- En suite to master
- NO ONWARD CHAIN!

Description

****GUIDE PRICE £300,000 - £325,000****

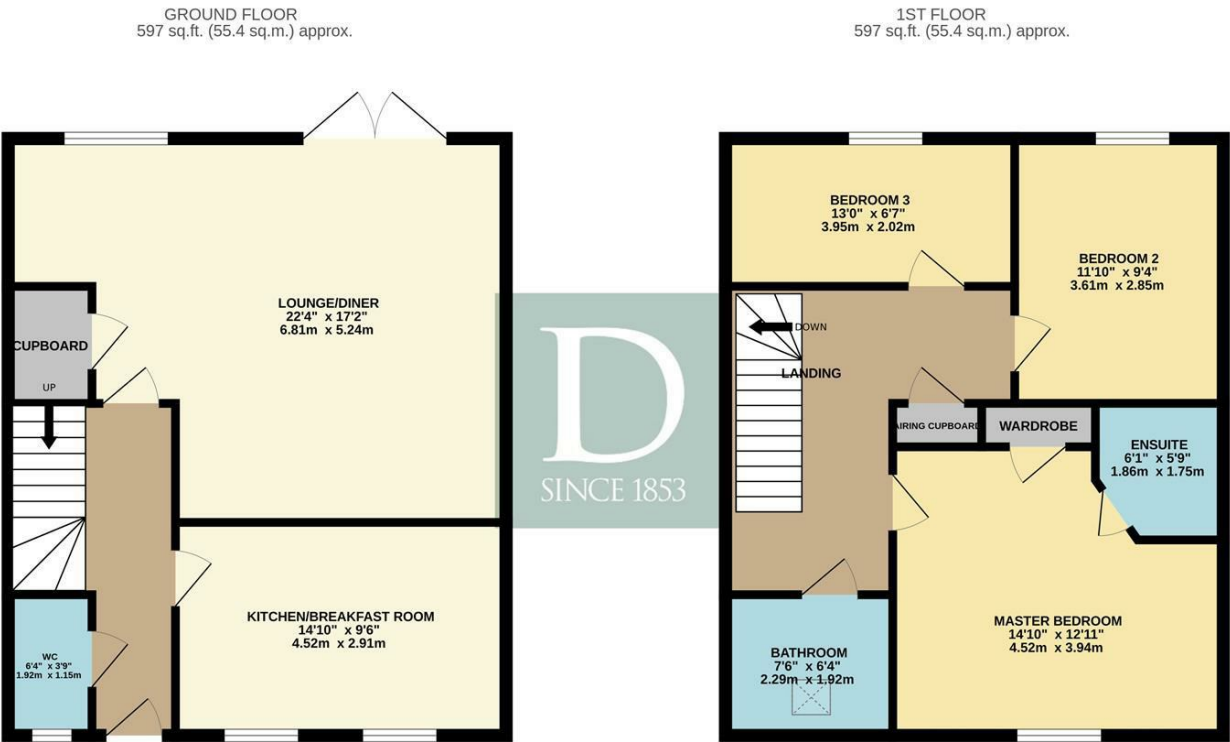
Tucked away in an exclusive private complex in the ever-popular village of Chedgrave, this well-presented and deceptively spacious three double bedroom end-terrace townhouse offers stylish and versatile living.

Directions





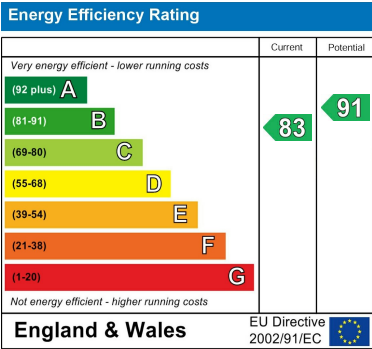
Floor plans



TOTAL FLOOR AREA : 1194 sq.ft. (110.9 sq.m.) approx.

Whilst every attempt has been made to ensure the accuracy of the floorplan contained here, measurements of doors, windows, rooms and any other items are approximate and no responsibility is taken for any error, omission or mis-statement. This plan is for illustrative purposes only and should be used as such by any prospective purchaser. The services, systems and appliances shown have not been tested and no guarantee as to their operability or efficiency can be given.

Made with Metropix ©2025



10 New Market
Beccles
Suffolk
NR34 9HA
01502 712122
infobeccles@durrants.com
<https://durrants.com/>