



London Road | Shadingfield | Beccles | NR34 8DH

Price Guide £570,000

DURRANTS
SINCE 1853

Key features

- Unique family home brimming with Character and history
- Originally used as a forge
- Four bedrooms
- Kitchen breakfast room with French doors leading out to the rear gardens
- Two separate garages with off road parking for several cars
- Beautifully landscaped gardens
- Oil fired central heating
- Popular village location close to Southwold and Beccles
- This is a truly special home, offering historical charm in a beautiful setting.

Description

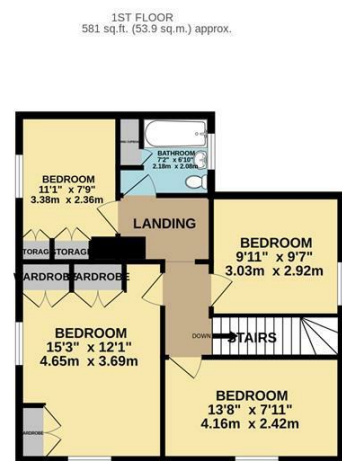
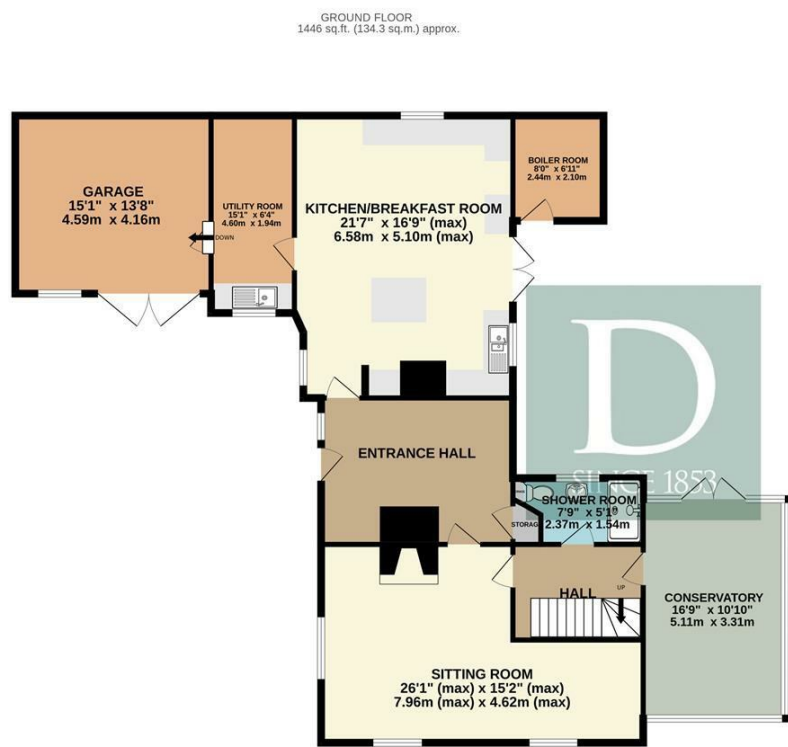
A truly unique family home, brimming with character and history, originally used as a forge and now providing a wonderful family home.

Directions





Floor plans



TOTAL FLOOR AREA : 2026 sq.ft. (188.3 sq.m.) approx.

Whilst every attempt has been made to ensure the accuracy of the floorplan contained here, measurements of doors, windows, rooms and any other items are approximate and no responsibility is taken for any error, omission or mis-statement. This plan is for illustrative purposes only and should be used as such by any prospective purchaser. The services, systems and appliances shown have not been tested and no guarantee as to their operability or efficiency can be given.

Made with Metropix ©2025

Energy Efficiency Rating		
	Current	Potential
Very energy efficient - lower running costs		
(92 plus) A		
(81-91) B		
(69-80) C		
(55-68) D		
(39-54) E		
(21-38) F		
(1-20) G		
Not energy efficient - higher running costs		
England & Wales	EU Directive 2002/91/EC	



10 New Market
Beccles
Suffolk
NR34 9HA
01502 712122
info@beccles@durrants.com
<https://durrants.com/>