



The Stackyard

Stoven Road | Uggeshall | Beccles | NR34 8EW

Guide Price **£750,000**

DURRANTS
SINCE 1853

Key features

- Lovely village location
- Flexible accommodation
- Generous plot of land
- Modern construction
- Countryside views
- Cart lodge and single garage

Description

Stunning modern detached family home nestled in a tranquil setting just a short drive from Southwold.



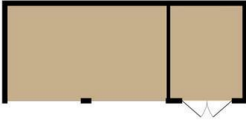
Directions





Floor plans

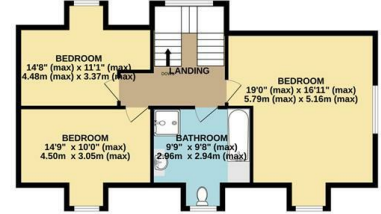
CART LODGE
285 sq.ft. (26.5 sq.m.) approx.



GROUND FLOOR
1382 sq.ft. (126.6 sq.m.) approx.



1ST FLOOR
738 sq.ft. (68.6 sq.m.) approx.



TOTAL FLOOR AREA : 2385 sq.ft. (221.6 sq.m.) approx.

Whilst every attempt has been made to ensure the accuracy of the floorplan contained here, measurements of doors, windows, rooms and any other items are approximate and no responsibility is taken for any error, omission or mis-statement. This plan is for illustrative purposes only and should be used as such by any prospective purchaser. The services, systems and appliances shown have not been tested and no guarantee as to their operability or efficiency can be given.
Made with Metropix ©2024

Energy Efficiency Rating		
	Current	Potential
Very energy efficient - lower running costs		
(92 plus) A		
(81-91) B		
(69-80) C		
(55-68) D		
(39-54) E		
(21-38) F		
(1-20) G		
Not energy efficient - higher running costs		
England & Wales	EU Directive 2002/91/EC	



10 New Market

Beccles

Suffolk

NR34 9HA

01502 712122

infobeccles@durrants.com

<https://durrants.com/>