



West Cliff Road

Bournemouth, Dorset BH2

2 Bedroom

**£1,250 pcm + Security
Deposit**



**Homes
& Steeple**



Flat 10 Bay View Mews, 14A West Cliff Road

Description

- Large Apartment
- Reception/Diner
- Energy Rating : B
- Furnished
- Separate Kitchen
- White Goods
- Two Double Bedrooms
- Family Bathroom + Ensuite
- Council Tax Band D
- Westcliff Location
- Allocated Parking

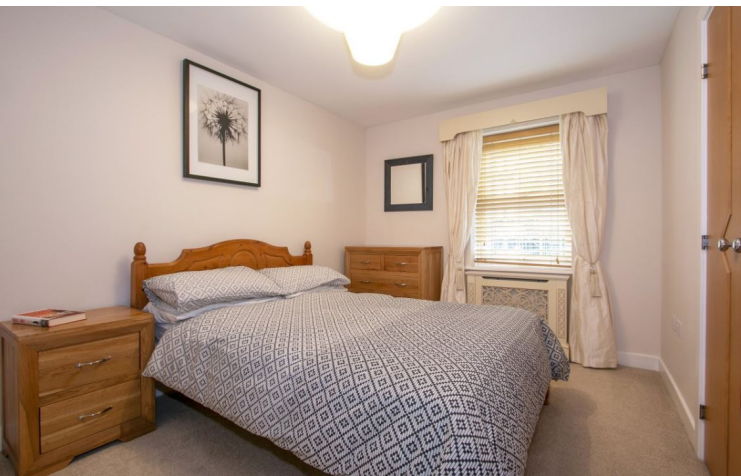
Set on the first floor, close to the beach this two double bedroom furnished apartment is set in a character conversion a few minutes walk from Bournemouth's Town Centre on the West Cliff.

The property comprises two double bedrooms with built in wardrobes, an ensuite shower-room to the master bed and a family bathroom. A Lounge/diner facing towards the beach and a separate kitchen which has white goods, including a dishwasher. The corridor has storage in two cupboards.

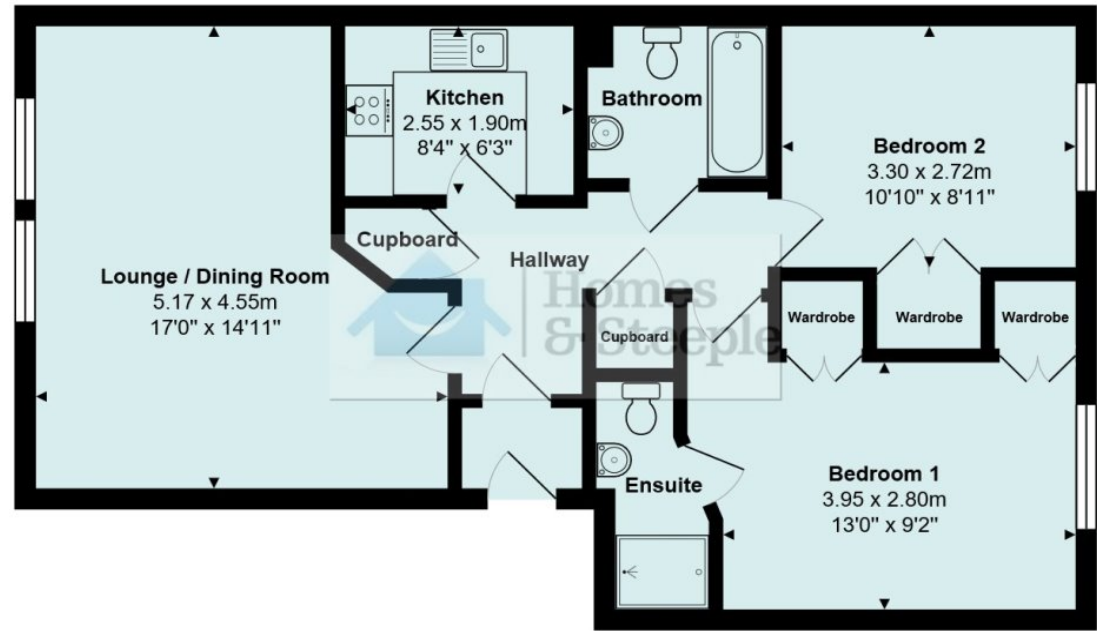
The property also includes one parking space with limited visitor parking. This is the perfect property for working professionals and will go quickly so please call today to book a viewing!



Accommodation Comprises:



Energy Efficiency Rating			Environmental Impact (CO ₂) Rating		
	Current	Potential		Current	Potential
Very energy efficient - lower running costs					
(92-100) A			(92-100) A		
(81-91) B	82	84	(81-91) B	88	89
(69-80) C			(69-80) C		
(55-68) D			(55-68) D		
(39-54) E			(39-54) E		
(21-38) F			(21-38) F		
(1-20) G			(1-20) G		
Not energy efficient - higher running costs					
England	EU Directive 2002/91/EC		England	EU Directive 2002/91/EC	



Homes & Steeple

30 The Triangle, Bournemouth
Dorset, BH2 5SE

telephone : 01202 553 898

email : lettings@homesandsteeple.co.uk

www.homesandsteeple.co.uk

THE PROPERTY MISDESCRIPTIONS ACT 1991: Any areas, measurements or distances are approximate. Land measurements are provided by the vendor and buyers are advised to obtain verification from their solicitor. The text, photographs and plans are for guidance only and are not necessarily comprehensive. Items shown in the property photographs are not included unless specifically mentioned within the sales particulars although they may be available by separate negotiation. Homes & Steeple Ltd cannot verify that the fixtures and fittings, equipment or services are in working order or fit for the purpose and buyers are advised to obtain verification from their solicitor. The tenure of a property is based upon information supplied by the seller and buyers are advised to obtain verification from their solicitor.