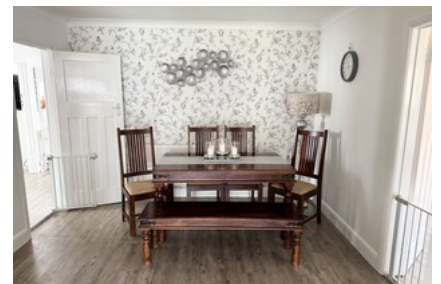




Springfield Avenue Holbury



- ✓ Superb Home Offering Upto Six Bedrooms
- ✓ Flexible Layout And Occupies A Position In The Village
- ✓ Garage And Double Driveway With Parking
- ✓ Two Large First Floor Bedrooms With One En-Suite
- ✓ Ground Floor Layout Could Accommodate An Annex
- ✓ Total Plot Measures 1/5 Of An Acre
- ✓ Level And Well Tended Gardens To Front And Rear
- ✓ Stunning Kitchen/dining Room
- ✓ Immaculately Presented By The Current Owner
- ✓ Click On The Virtual Tour For A Full Internal Inspection

£595,000

Bedroom 6 Bathroom 2 Reception 2