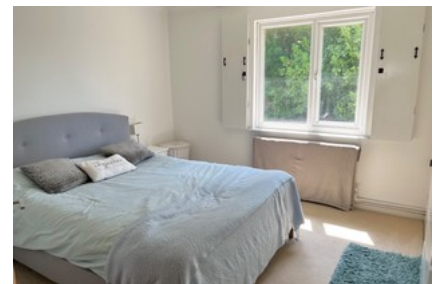




Crawte Avenue Holbury



- ✔ Two Bedroom First Floor Maisonette
- ✔ Ideal For So Many Purposes Including Investment
- ✔ Set In No Through Road Close
- ✔ Double Glazed And Gas Centrally Heated
- ✔ Worcester Bosch Combination Boiler
- ✔ Storage Area At Top Of Stairs
- ✔ Enclosed Rear Garden
- ✔ On Street Parking
- ✔ Remainder Of 999 Year Lease
- ✔ Call Us Now To Book A Viewing

Offers in Excess of **£180,000**

Bedroom 2 Bathroom 1 Reception 1