



“Castle Cottage”, Dalton, Richmond

Offers in the Region of £190,000

Centrally located in this very popular village which is surrounded by open countryside, “Castle Cottage” is an immaculately presented cottage. The characterful living spaces include a cosy and snug Bijou living room with log burning stove, a dining kitchen, two bedrooms and a bathroom. Externally there is a garden bordering open countryside. Of interest to a range of buyers, an early inspection is strongly advised!

Entrance Lobby– Living Room – Dining Kitchen – Two Bedrooms – Bathroom - Garden

21 Market Place, Richmond, North Yorkshire, DL10 4QG

“Castle Cottage”, Dalton

Centrally located in this very popular village which is surrounded by open countryside, “Castle Cottage” is an immaculately presented cottage. The characterful living spaces include a cosy and snug Bijou living room with log burning stove, a dining kitchen, two bedrooms and a bathroom. Externally there is a garden bordering open countryside. Of interest to a range of buyers, an early inspection is strongly advised!

Entrance Lobby:

Accessed through a upvc part glazed door and providing space for hanging coats.

Living Room:

4.47m max x 3.16m

A cosy room, the central feature of which is the log burning stove.



There is a upvc double glazed window to the front of the property, exposed ceiling joists, a TV point and an electric heater.



Dining Kitchen:

4.33m x 3.72m

Providing ample space for a table, the kitchen is fitted with a generous range of units with complimenting workspaces.



Integrated into the units are an electric cooker and hob with an extractor over. There is a washing machine, space for a fridge freezer, a large under stairs cupboard and a upvc double glazed window overlooking the rear garden.



Rear Lobby:

With a half glazed upvc door to the rear of the property and stairs to the first floor.

First Floor Landing:

With airing cupboard.

Bedroom 1:

4.47m max x 3.65m

A double bedroom an electric heater, loft access and a upvc double glazed window to the front of the property.



Bedroom 2:
3.36m x 2.38m

With an electric heater and a upvc double glazed window overlooking the rear garden.



Bathroom:

Fitted with a modern white suite that comprises a bath with an electric shower over, a WC and a wash hand basin. There is a upvc double glazed window.



External

The property has the benefit of a rear garden that borders open countryside. It features a paved seating area and a lawn.



There is on street parking to the front of the property.



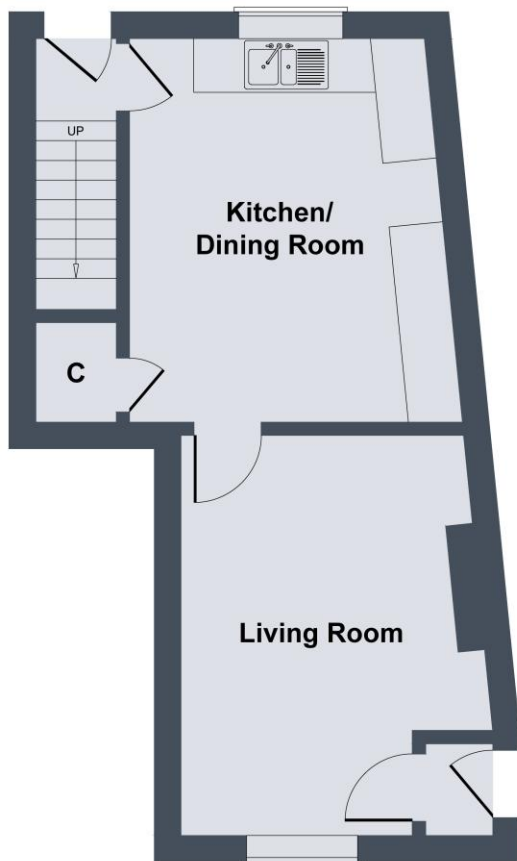
Additional Information

The postcode is DL11 7HS and the Council Tax Band is C.

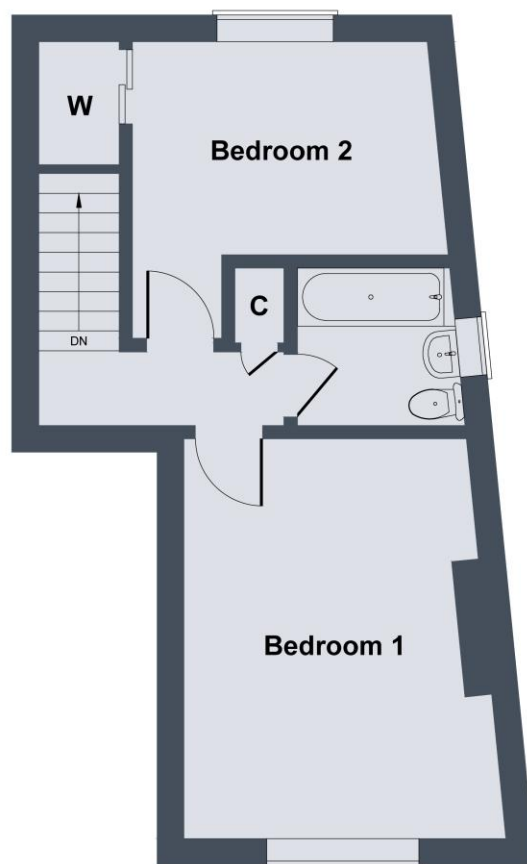
The adjacent cottages have a pedestrian right of way to the rear of Castle Cottage.



Castle Cottage, Dalton



GROUND FLOOR



FIRST FLOOR

SKETCH PLAN FOR ILLUSTRATIVE PURPOSES ONLY

All measurements walls, doors, windows, fittings and appliances, their sizes and locations, are approximate only. They cannot be regarded as being a representation by the seller, nor their agent.

Produced by Potterplans Ltd. 2020