



## Heworth Village, York Prices From £399,995

A beautiful three bedroom, two bathroom new built townhouse location in the attractive Heworth Village.





An exclusive development located along this most sought after street on the edge of the city centre provided beautifully constructed new build town houses with gardens and parking.

The accommodation is laid out over three floors and includes an entrance hall with doors off to a cloakroom/WC, living room and dining kitchen with doors opening onto a predominantly south facing garden. On the first floor are two double bedrooms and a bathroom whilst on the top floor is a master bedroom with en-suite shower room.



The Semi Detached - arranged over two floors comprising, entrance hall with w/c, living room, open planing dining kitchen with bi folding doors to the ground floor and three bedrooms with master en suite and house bathroom to the first floor. All plots benefit from off street parking.

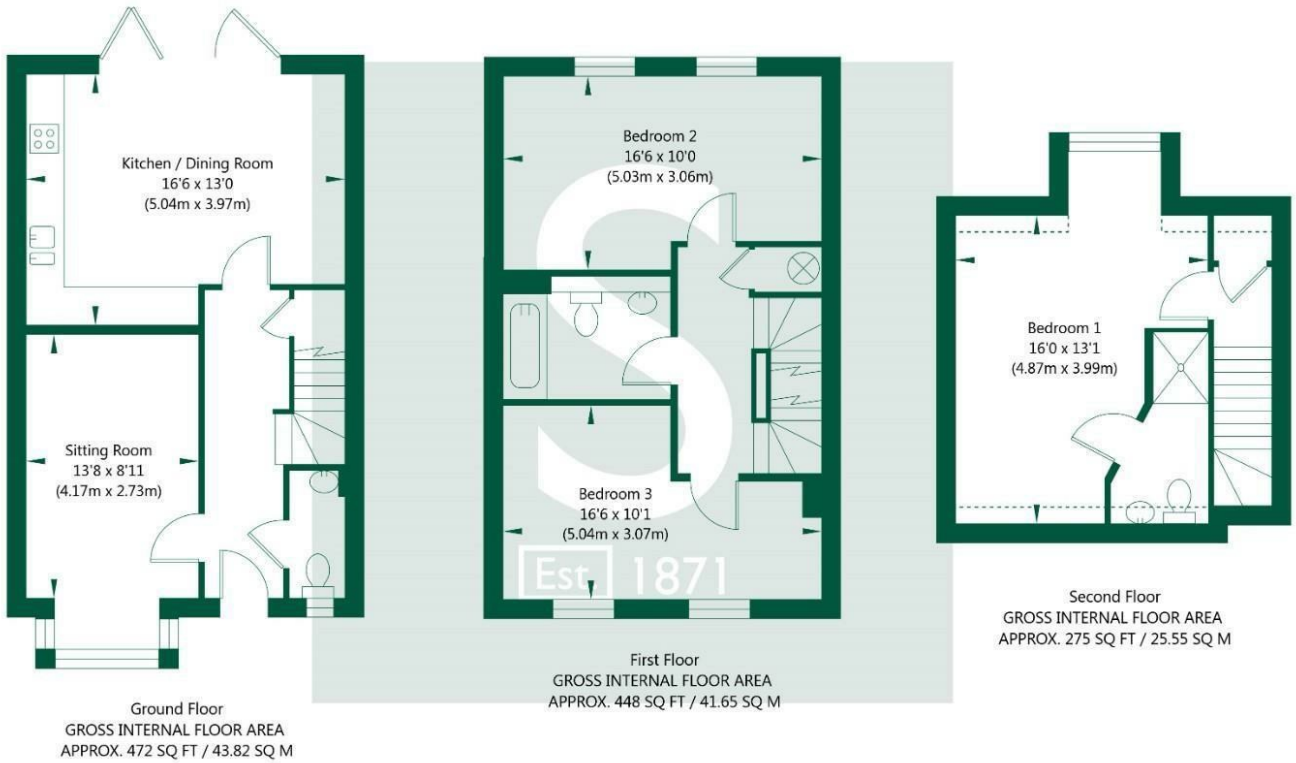
Set within a private development and are certain to be of interest to families, retirees and professional couples



The development offers quick and easy access to the major travel routes including the A64 York to Leeds Road and in turn the A1 M1 Link. The railway station are within easy walking distance as is all the local bars, restaurants and sites associated with the historic city of York.

Each property is being sold with a full 10 year New Home Warranty, NEFF appliances and an internal finish to a high specification. All the 8 units will be completed in spring 2024 and an early inspection is strongly recommended to appreciate the quality on offer.

Heworth Mews, Heworth, York, YO31 1AP



NOT TO SCALE - FOR ILLUSTRATIVE PURPOSES ONLY  
 APPROXIMATE GROSS INTERNAL FLOOR AREA 1195 SQ FT / 111.02 SQ M  
 All measurements and fixtures including doors and windows are approximate and should be independently verified.  
 www.exposurepropertymarketing.com © 2024



**Stephensons**

|                     |              |
|---------------------|--------------|
| York                | 01904 625533 |
| Knaresborough       | 01423 867700 |
| Selby               | 01757 706707 |
| Boroughbridge       | 01423 324324 |
| Easingwold          | 01347 821145 |
| York Auction Centre | 01904 489731 |
| Haxby               | 01904 809900 |

**Partners**

- J F Stephenson MA (cantab) FRICS FAAV
- I E Reynolds BSc (Est Man) FRICS
- R E F Stephenson BSc (Est Man) MRICS FAAV
- N J C Kay BA (Hons) pg dip MRICS
- O J Newby MNAEA
- J E Reynolds BA (Hons) MRICS
- R L Cordingley BSc FRICS FAAV
- J C Drewniak BA (Hons)

**Associates**

N Lawrence

