



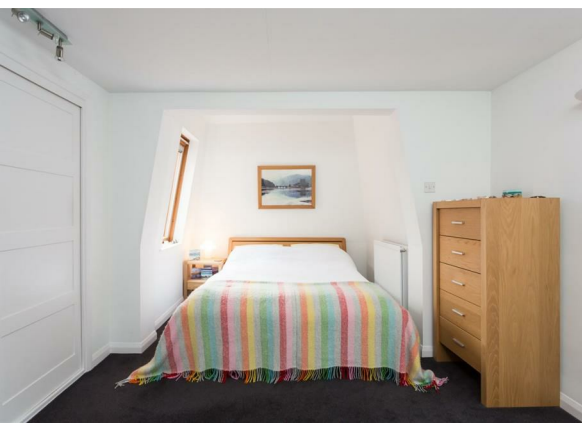
## Main Street, Heslington, York £750,000

This meticulously designed home provides flexible living accommodation arranged over three floors and is situated in the lovely Heslington village. The property is offered for sale with the benefit of no forward chain.



Entered through a composite door with surrounding glass panes, you are welcomed into a spacious entrance hall with oak flooring. A carpeted staircase with toughened safety glass bannisters leads to the first floor, which is currently utilised to provide the main living spaces within the home.

The principal sitting room sits to the rear and features a coal-effect gas fire in the exposed brick chimney breast wall. An abundance of natural light flow fills the room through a velux roof light and box bay window, which overlooks the stunning rear garden.



Wooden double doors separate the sitting room and kitchen/dining area, opening up to create a lovely open plan living space. The kitchen itself comprises a high quality range of soft close fitted wall and base units, with Quartz worktops. Integrated appliances include a NEFF double oven and induction hob with concealed extractor hood over, fridge and freezer, as well as having plumbing for a dishwasher. A box bay window to the rear houses the sink with mixer tap over.

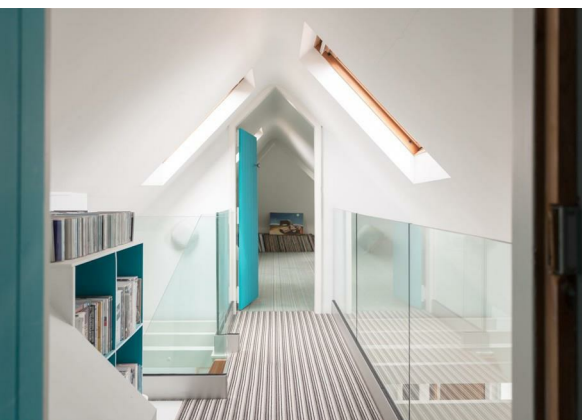
There is also a carpeted dining area with ample space for a dining table and chairs, and sliding door leading out to the sunny courtyard, which is stone-flagged and provides a great place to enjoy outdoor dining or your morning coffee.



To the front elevation are two spacious double bedrooms, both with fitted wardrobes.

Completing the first floor is the house bathroom and a useful linen cupboard. The bathroom has steps up to the bath, which has rainfall and handheld showers over. There is also a low flush WC, hand wash basin and heated towel rail, as well as a velux roof light.

A unique paddled staircase ascends up to the second floor, which boasts two further versatile bedrooms, both having velux roof lights.



On the ground floor of the property, there is a large utility room and a downstairs shower room with corner shower, hand wash basin and it's very own sauna. There is also a spacious room to the rear of the property, which is currently used as a home gym, but could provide a further bedroom or home office. Next to the gym, there is a downstairs WC and separate large storage cupboard.

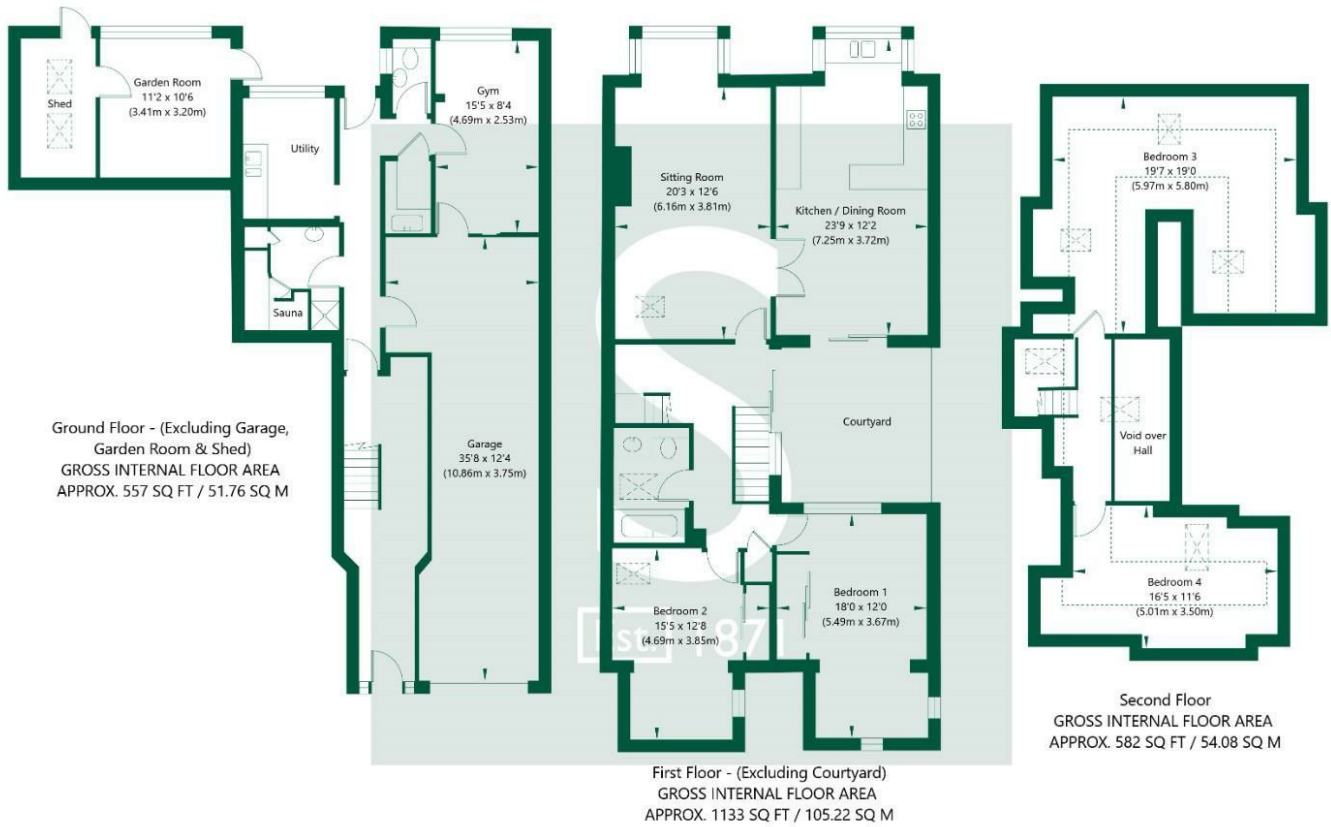
To the front, the property has ample off street parking on the driveway, as well as a substantial integral garage, which offers parking for two cars and storage space.

To the rear sits a stunning garden which is an oasis of peace and quiet, tucked away within this lovely Village. The garden is filled with well-stocked flower beds as well as mature trees.

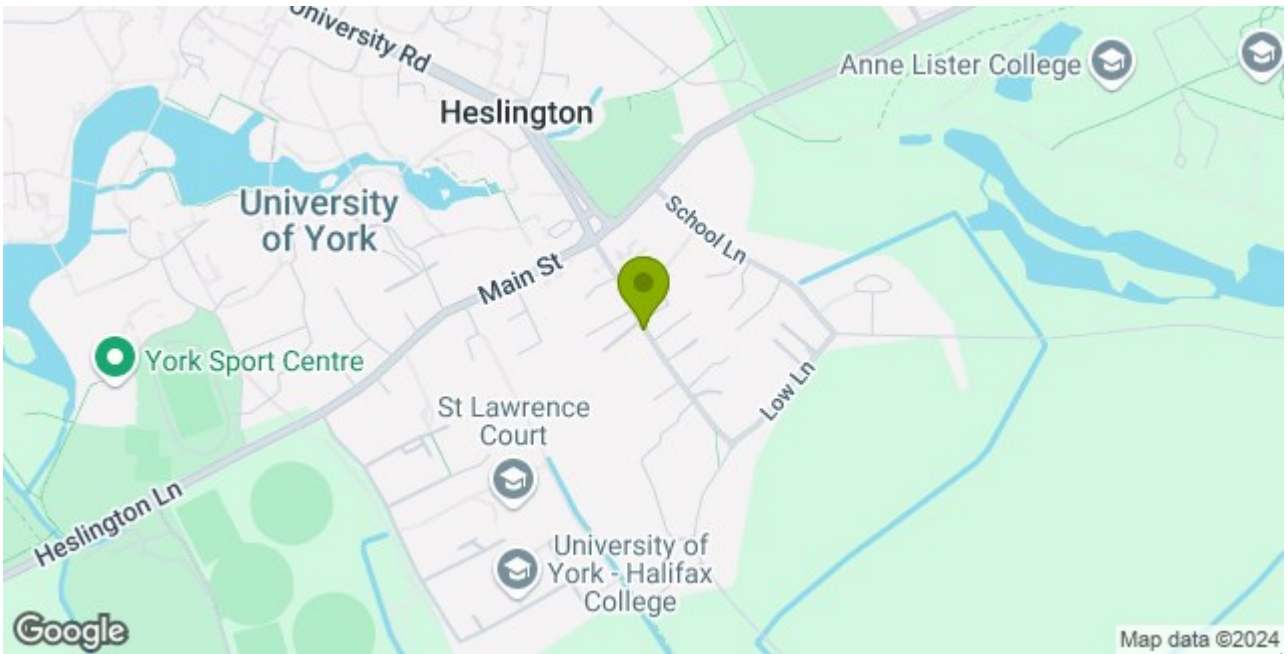


Heslington is a charming and picturesque village and is only a short walk from the University of York and ten minutes from the City Centre. Popular local amenities include two village pubs, a post office and fabulous sandwich shop.

Main Street, Heslington, York, YO10 5EA



NOT TO SCALE - FOR ILLUSTRATIVE PURPOSES ONLY  
 APPROXIMATE GROSS INTERNAL FLOOR AREA 2272 SQ FT / 211.06 SQ M  
 All measurements and fixtures including doors and windows are approximate and should be independently verified.  
 www.exposurepropertymarketing.com © 2022



**Stephensons**

York	01904 625533
Knaresborough	01423 867700
Selby	01757 706707
Boroughbridge	01423 324324
Easingwold	01347 821145
York Auction Centre	01904 489731
Haxby	01904 809900

**Partners**

- J F Stephenson MA (cantab) FRICS FAAV
- I E Reynolds BSc (Est Man) FRICS
- R E F Stephenson BSc (Est Man) MRICS FAAV
- N J C Kay BA (Hons) pg dip MRICS
- O J Newby MNAEA
- J E Reynolds BA (Hons) MRICS
- R L Cordingley BSc FRICS FAAV
- J C Drewniak BA (Hons)

**Associates**

N Lawrence

