



MILE END ROAD, E1

£2,500 OFFERS IN EXCESS

- One Double Bedroom
- Stylish Modern Finish
- Excellent Transport Links

- Two Private Roof Terraces
- Private Parking
- Part Furnished

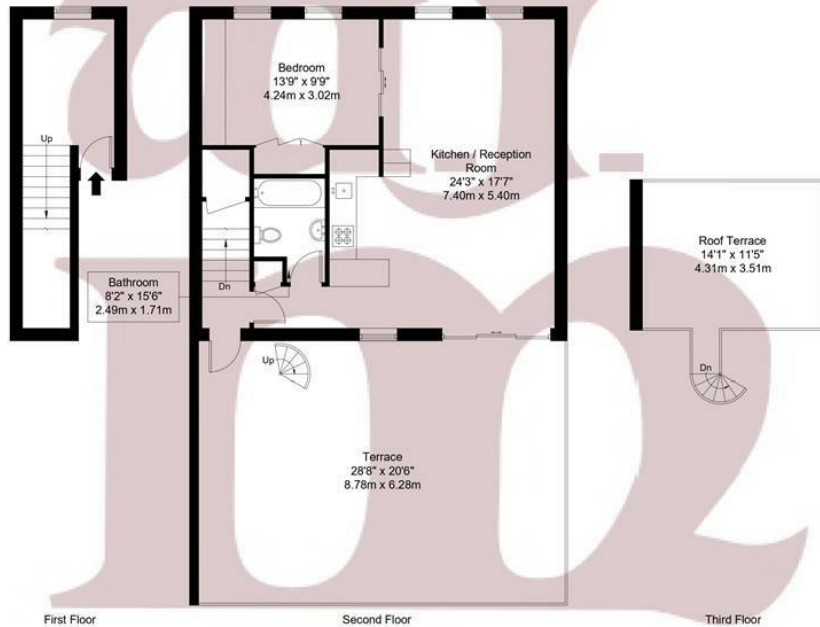
wj.
meade



Mile End Road



est. 1953



Approx Gross Internal Area = 70.36 sq m / 757 sq ft
Terraces = 70.27 sq m / 756 sq ft
Total = 140.63 sq m / 1513 sq ft

The Floor plan is not to scale and measurements and areas shown are approximate and therefore should be used for illustrative purposes only. The plan has been prepared in accordance with the RICS code of Measuring Practice and whilst we have confidence in the information produced it must not be relied on. Maximum lengths and widths are represented on the floor plan. If there is any aspect of particular importance, you should carry out or commission your own inspection of the property.
Copyright @ BleuPlan



WJ Meade are delighted to offer for rent, this stunning one bed Apartment with two roof terraces located within short distance of Mile End and Stepney Green tube stations.

This beautifully presented apartment offers the perfect blend of comfort, modern design, and convenience. With a double dual-pitched roof incorporating full-width, north-facing skylights that allow soft light to flood into the open-plan living space and adjacent bedroom. Large slim-line sliding doors separating the bedroom to the living space and dining area.

A level threshold between the dining area and the terrace ensures a smooth transition from interior to exterior spaces, perfect for alfresco entertaining. Close to local amenities, cafés, supermarkets, and multiple bus routes offer quick access to Canary Wharf, Stratford, and the City, property comes part furnished and private parking available.

Ideal for professional couple seeking high-quality accommodation in East London.

Service charge £n/a

Ground rent £n/a

Reserve fund £n/a

n/a years lease

Council tax band

Current EPC Rating 56

Tenure:



All sizes are approximate. The Agent has not tested any apparatus, equipment, fixtures and fittings, or services and so cannot verify that they are in working order or fit for the purpose. A buyer is advised to obtain verification from their Solicitors or Surveyor. Photographs are for illustration purposes only and may depict items, which are not for sale or included in the sale price. References to tenure of a property are based upon information supplied by the vendor. The agent has not had sight of the title documents, a buyer is advised to obtain verification from their solicitor. Money Laundering Regulations 2003: Intending purchasers will be asked to produce identification, documentation at a later stage and we would ask for your co-operation in order that there will be no delay in agreeing the sale.

These particulars are intended to give a fair description of the property only and are in no way guaranteed, nor do of any contract. They are issued on the express condition that all negotiations are conducted through WJ. Meade Estate Agents. All subject to contract and to being unsold.