

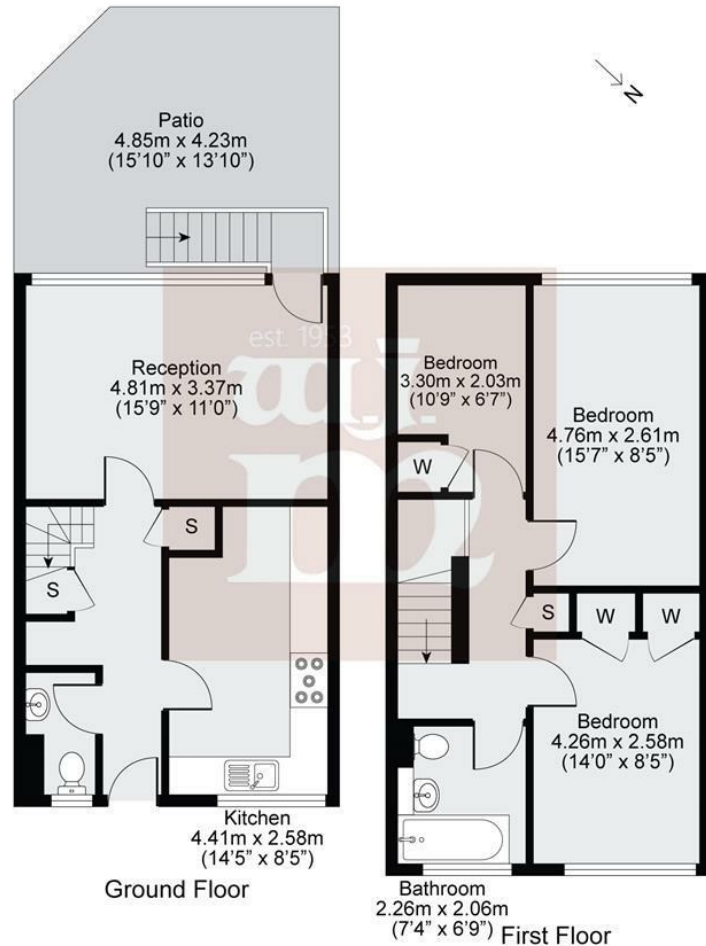


WINDERMERE HOUSE, MILE END, ERIC STREET E3

£2,750 PER MONTH

- Three bedroom
- Close to mile end tube station and victoria park
- Offers over £2250pcm
- Ideal for sharers
- Easy reach to canary wharf

wj.
meade

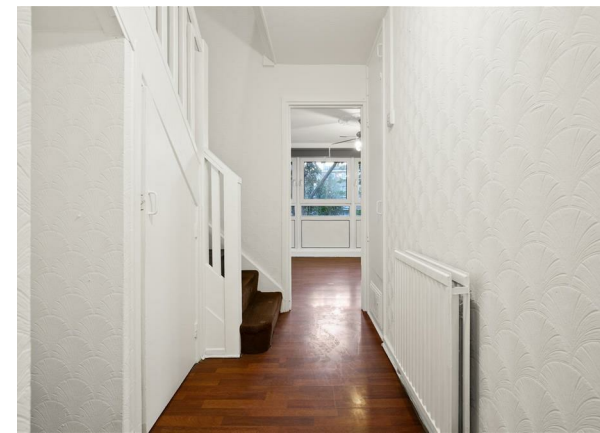


GROSS INTERNAL AREA:
The footprint of the property
87.3sqm / 939.7sqft

TOTAL STORAGE SPACE:
Storage and wardrobe space
3.1sqm / 33.4sqft

EXTERNAL STRUCTURAL FEATURES:
Gardens, Balconies, Terraces, Verandahs etc.
20.5 sqm / 220.7sqft

RESTRICTED HEAD HEIGHT:
Limited use areas under 3.0m
0.0 sqm / 0.0sqft



W J Meade are pleased to offer for let this three bedroom ground floor maisonette within a low rise block, brand new kitchen / diner, west facing lounge leading to patio area, property comes unfurnished, arranged over 883sq, Situated moments from Mile End Station, close to all local amenities, ideal for sharers, available now for long let.

*Please note that there is scaffolding up on this property for current works ongoing to block.

Service charge £n/a

Ground rent £n/a

Reserve fund £n/a

n/a years lease

Council tax band A

Current EPC Rating 69

Tenure:



All sizes are approximate. The Agent has not tested any apparatus, equipment, fixtures and fittings, or services and so cannot verify that they are in working order or fit for the purpose. A buyer is advised to obtain verification from their Solicitors or Surveyor. Photographs are for illustration purposes only and may depict items, which are not for sale or included in the sale price. References to tenure of a property are based upon information supplied by the vendor. The agent has not had sight of the title documents, a buyer is advised to obtain verification from their solicitor. Money Laundering Regulations 2003: Intending purchasers will be asked to produce identification, documentation at a later stage and we would ask for your co-operation in order that there will be no delay in agreeing the sale.

These particulars are intended to give a fair description of the property only and are in no way guaranteed, nor do of any contract. They are issued on the express condition that all negotiations are conducted through W.J. Meade Estate Agents. All subject to contract and to being unsold.