



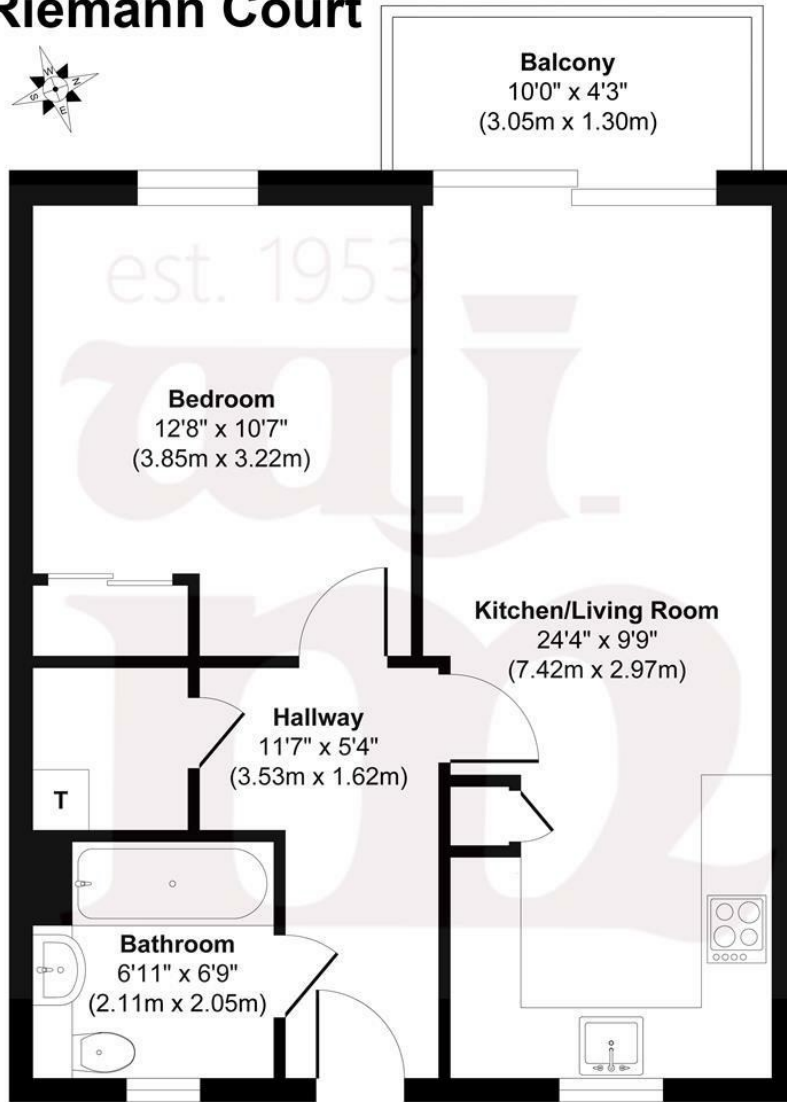
## RIEMANN COURT, BOW COMMON LANE E3

£1,650 LH

- West Facing Balcony
- BSA Landlord Certificate
- Chain Free
- 502 Sq Ft
- Communal Garden
- Large Storage Cupboard

wj.  
meade

# Riemann Court



**Second Floor**  
**Approx. Gross Internal Floor Area 502 sq. ft / 46.67 sq. m**  
Illustration for identification purposes only, measurements are approximate, not to scale.  
Produced by Elements Property



WJ Meade are pleased to offer for let this second floor one bedroom apartment within a stylish modern development. Arranged with a dual aspect kitchen/reception room and adjoining balcony. The contemporary bathroom suite is fully tiled and the bedroom has a fitted wardrobe. Well situated for access into Canary Wharf and Mile End. This property is unfurnished.

All sizes are approximate. The Agent has not tested any apparatus, equipment, fixtures and fittings, or services and so cannot verify that they are in working order or fit for the purpose. A buyer is advised to obtain verification from their Solicitors or Surveyor. Photographs are for illustration purposes only and may depict items, which are not for sale or included in the sale price. References to tenure of a property are based upon information supplied by the vendor. The agent has not had sight of the title documents, a buyer is advised to obtain verification from their solicitor. Money Laundering Regulations 2003: Intending purchasers will be asked to produce identification, documentation at a later stage and we would ask for your co-operation in order that there will be no delay in agreeing the sale.

These particulars are intended to give a fair description of the property only and are in no way guaranteed, nor do of any contract. They are issued on the express condition that all negotiations are conducted through W.J. Meade Estate Agents. All subject to contract and to being unsold.

Service charge £2,393.34 pa  
Ground rent £250 pa  
116 years lease  
Council Tax Band C  
Current EPC Rating 81

