



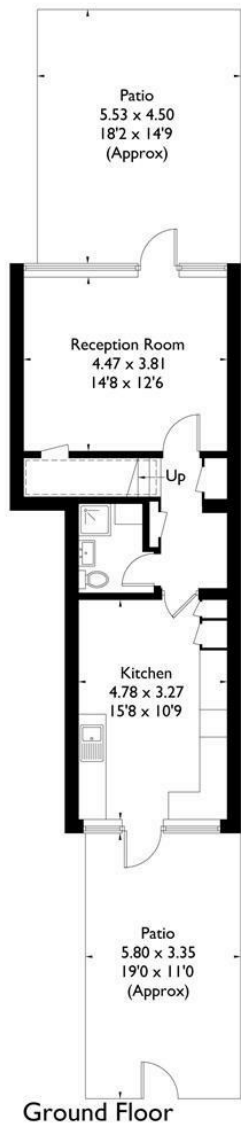
## STILEMAN HOUSE, BOW, E3

£2,500 PER MONTH

- Modern Kitchen
- Front & Back Gardens
- Offers over £2500pcm
- Arranged over Two Floors
- Two Bathrooms
- Suitable for sharers

wj.  
meade

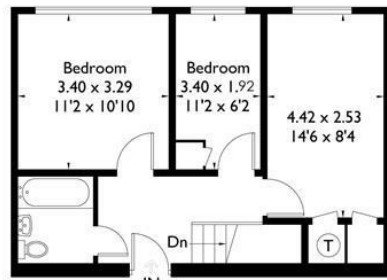




## Stileman House, Ackroyd Drive, E3

Approximate Gross Internal Area = 88.2 sq m / 949 sq ft

= Reduced headroom below 1.5m / 5'0



FLOORPLANZ © 2016 0845 6344080 Ref: 173451

This plan is for layout guidance only. Drawn in accordance with RICS guidelines. Not drawn to scale unless stated. Windows & door openings are approximate. Whilst every care is taken in the preparation of this plan, please check all dimensions, shapes & compass bearings before making any decisions reliant upon them.



W J Meade are pleased to present this recently refurbished split level, three-bedroom garden maisonette located in Stileman House E3. Set behind a large front garden, the front door opens directly onto a fully integrated designer kitchen with modern amenities. Leading to the back half of the property dividing the kitchen/diner and the main reception room is downstairs shower room. Then through to the reception room, there are doors out onto the additional garden. Upstairs compromises three bedrooms and the main bathroom. The development is very well located for transport links, Langdon Park DLR, Westferry DLR and Mile End (Central Line) Station. These stations give easy access into the City , Canary Wharf, Royal Greenwich, and Stratford International. Offers between £2600 - £2700pcm

Deposit is 5 week's rent.

Service charge £n/a  
Ground rent £n/a  
Reserve fund £n/a  
n/a years lease  
Council tax band C  
Current EPC Rating 70



All sizes are approximate. The Agent has not tested any apparatus, equipment, fixtures and fittings, or services and so cannot verify that they are in working order or fit for the purpose. A buyer is advised to obtain verification from their Solicitors or Surveyor. Photographs are for illustration purposes only and may depict items, which are not for sale or included in the sale price. References to tenure of a property are based upon information supplied by the vendor. The agent has not had sight of the title documents, a buyer is advised to obtain verification from their solicitor. Money Laundering Regulations 2003: Intending purchasers will be asked to produce identification, documentation at a later stage and we would ask for your co-operation in order that there will be no delay in agreeing the sale.

These particulars are intended to give a fair description of the property only and are in no way guaranteed, nor do of any contract. They are issued on the express condition that all negotiations are conducted through W.J. Meade Estate Agents. All subject to contract and to being unsold.