

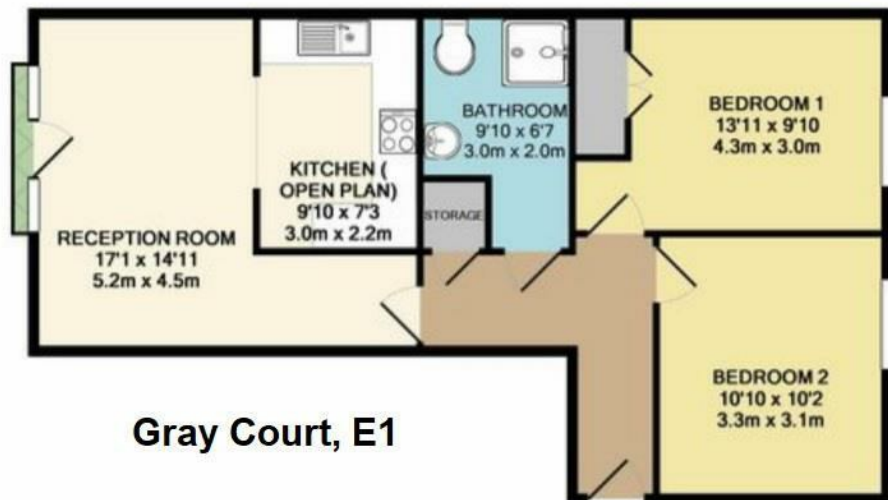


GRAY COURT, STEPNEY GREEN, E1, E1

£2,000 OFFERS IN EXCESS

- Modern Apartment
- Easy Access to Mile End Park
- Available middle of June
- Two Double Bedrooms
- Close to Mile End & Stepney Green Stations

wj.
meade



W J Meade are pleased to offer this modern bright and spacious two double bedroom apartment for rent comprised with two bedrooms, open-plan kitchen lounge and shower room. With easy access to Mile End park and walking distance to Mile End and Stepney Green underground stations. The property is available early December for long let and suitable for working professionals.

Deposit is 5 week's rent.

All sizes are approximate. The Agent has not tested any apparatus, equipment, fixtures and fittings, or services and so cannot verify that they are in working order or fit for the purpose. A buyer is advised to obtain verification from their Solicitors or Surveyor. Photographs are for illustration purposes only and may depict items, which are not for sale or included in the sale price. References to tenure of a property are based upon information supplied by the vendor. The agent has not had sight of the title documents, a buyer is advised to obtain verification from their solicitor. Money Laundering Regulations 2003: Intending purchasers will be asked to produce identification, documentation at a later stage and we would ask for your co-operation in order that there will be no delay in agreeing the sale.

These particulars are intended to give a fair description of the property only and are in no way guaranteed, nor do of any contract. They are issued on the express condition that all negotiations are conducted through W.J. Meade Estate Agents. All subject to contract and to being unsold.

Service charge £n/a
Ground rent £n/a
Reserve fund £n/a
n/a years lease
Council tax band D
Current EPC Rating 81

