



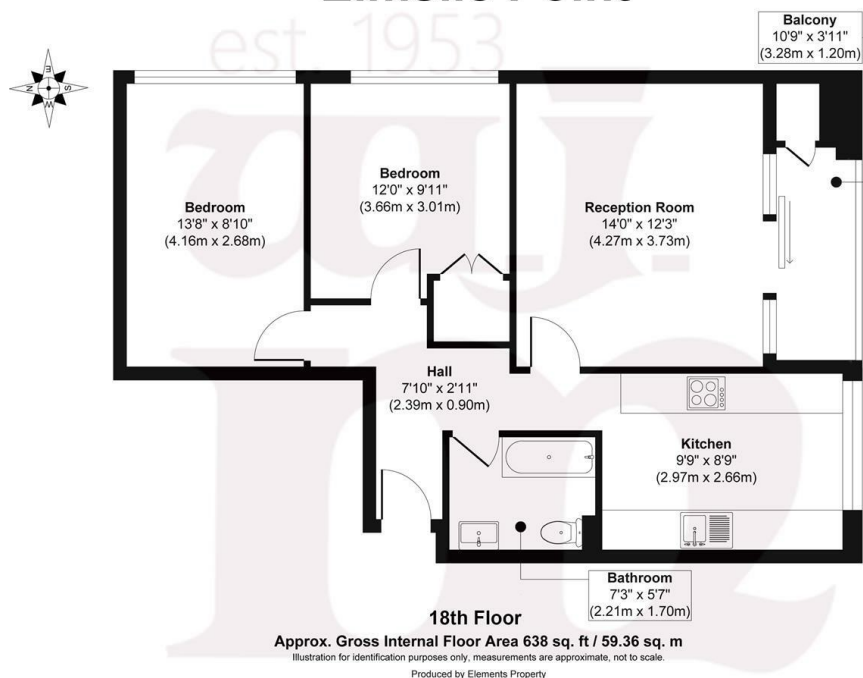
LEOPOLD STREET, E3

£325,000 L/H

- Stunning far-reaching views
- Residents permit parking
- penultimate top floor
- South facing balcony
- Chain free
- Well located between Mile End & Canary Wharf

wj.
meade

Elmslie Point



WJ Meade are delighted to offer this stunning 18th floor apartment, boasting amazing panoramic views across East London to include the Canary Wharf and The City, plus far beyond. Internally, the property has undergone a contemporary renovation, with modern kitchen and bathroom suite, plus hardwood flooring. The building is serviced by two lifts, taking you high up to a point whereby the outlook is simply breathtaking and the epitome of high-rise London living.

All sizes are approximate. The Agent has not tested any apparatus, equipment, fixtures and fittings, or services and so cannot verify that they are in working order or fit for the purpose. A buyer is advised to obtain verification from their Solicitors or Surveyor. Photographs are for illustration purposes only and may depict items, which are not for sale or included in the sale price. References to tenure of a property are based upon information supplied by the vendor. The agent has not had sight of the title documents, a buyer is advised to obtain verification from their solicitor. Money Laundering Regulations 2003: Intending purchasers will be asked to produce identification, documentation at a later stage and we would ask for your co-operation in order that there will be no delay in agreeing the sale.

These particulars are intended to give a fair description of the property only and are in no way guaranteed, nor do of any contract. They are issued on the express condition that all negotiations are conducted through W.J. Meade Estate Agents. All subject to contract and to being unsold.

Service charge £3,022.14 pa
 Ground rent £10.00 pa
 88 years lease
 Council Tax Band B
 Current EPC Rating 50

