



RHODESWELL ROAD, LIMEHOUSE, E14

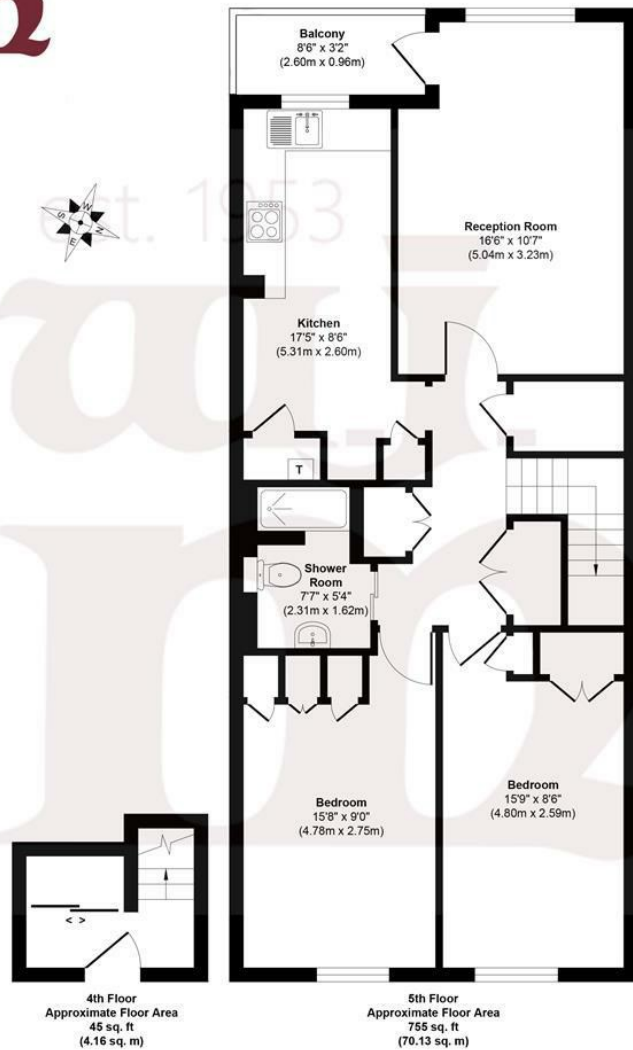
£2,200 OFFERS IN EXCESS

- Heating & Hot Water Included
- West facing balcony
- Close to Limehouse Station
- Modern Kitchen
- 800 sq ft
- Offers over £2150pcm

wj.  
meade



## Rhodeswell Road



**Approx. Gross Internal Floor Area 800 sq. ft / 74.29 sq. m**

Illustration for identification purposes only, measurements are approximate, not to scale.  
Produced by Elements Property



WJ Meade are pleased to offer this two double bedroom top floor flat to rent alongside Salmon Lane Lock on the Regents Canal. The property has been modernised to a great standard including a stylish shower room, eat-in kitchen and bespoke storage. A major benefit is that the heating and hot water is included in the price. The property comes part-furnished and is available 5th June.

Offers between £2150 - £2250pcm (as heating and hot water is included)

All sizes are approximate. The Agent has not tested any apparatus, equipment, fixtures and fittings, or services and so cannot verify that they are in working order or fit for the purpose. A buyer is advised to obtain verification from their Solicitors or Surveyor. Photographs are for illustration purposes only and may depict items, which are not for sale or included in the sale price. References to tenure of a property are based upon information supplied by the vendor. The agent has not had sight of the title documents, a buyer is advised to obtain verification from their solicitor. Money Laundering Regulations 2003: Intending purchasers will be asked to produce identification, documentation at a later stage and we would ask for your co-operation in order that there will be no delay in agreeing the sale.

These particulars are intended to give a fair description of the property only and are in no way guaranteed, nor do of any contract. They are issued on the express condition that all negotiations are conducted through WJ. Meade Estate Agents. All subject to contract and to being unsold.

Service charge £n/a  
Ground rent £n/a  
Reserve fund £n/a  
n/a years lease  
Council tax band A  
Current EPC Rating 52

