



HARFORD STREET, STEPNEY GREEN, E1

£1,750 PER MONTH

- Private Terrace
- Fully Furnished
- Modern Development
- Large Ground Floor Flat
- Stylish Kitchen
- Communal Gardens & Play Area

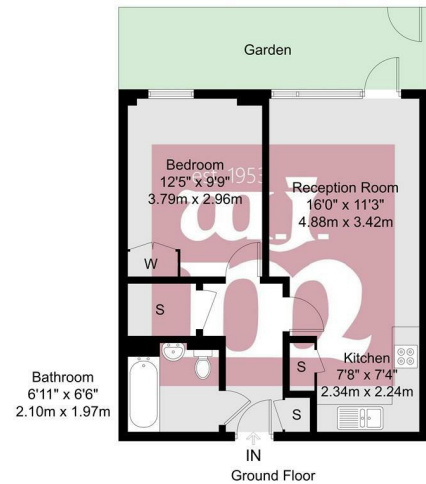
wj.  
meade





Graciosa Court, E1

GROSS INTERNAL AREA  
46.7 sq m / 502 sq ft



GROSS INTERNAL AREA (GIA)  
The largest of the property  
46.7 sq m / 502 sq ft

TOTAL STORAGE SPACE  
Storage for wardrobe and other  
3.3 sq m / 35 sq ft

EXTERNAL STRUCTURAL FEATURES  
Balcony, Terrace, Terrace, Terrace etc.  
0.0 sq m / 0.0 sq ft

RESTRICTED HEAD HEIGHT  
Limited use under 1.9m  
0.0 sq m / 0.0 sq ft

Disclaimer : Floorplan measurements are approximate and are for illustrative purposes only. While we do not doubt the floorplan accuracy and completeness, you or your advisors should conduct a careful, independent investigation of the property in respect of monetary valuation.

Maison  
VUE



W J Meade are pleased to offer this stylish ground floor apartment to rent in Graciosa Court, E1. Comprising a stunning open-plan stylish kitchen/lounge area, with doors out onto the impressive private terrace overlooking the communal gardens. The apartment also has a large double bedroom (with built-in wardrobes) and modern bathroom, with lots of storage throughout. Located in a secure modern development in a vibrant part of East London, minutes away from Mile End /Stepney Green tube stations and close to Regents Canal / Mile End Park, and easy reach to Canary Wharf / City. Ideal for a couple.  
Deposit is 5 week's rent.

All sizes are approximate. The Agent has not tested any apparatus, equipment, fixtures and fittings, or services and so cannot verify that they are in working order or fit for the purpose. A buyer is advised to obtain verification from their Solicitors or Surveyor. Photographs are for illustration purposes only and may depict items, which are not for sale or included in the sale price. References to tenure of a property are based upon information supplied by the vendor. The agent has not had sight of the title documents, a buyer is advised to obtain verification from their solicitor. Money Laundering Regulations 2003: Intending purchasers will be asked to produce identification, documentation at a later stage and we would ask for your co-operation in order that there will be no delay in agreeing the sale.

These particulars are intended to give a fair description of the property only and are in no way guaranteed, nor do of any contract. They are issued on the express condition that all negotiations are conducted through W.J. Meade Estate Agents. All subject to contract and to being unsold.

Service charge £n/a  
Ground rent £n/a  
Reserve fund £n/a  
n/a years lease  
Council tax band  
Current EPC Rating 74

