



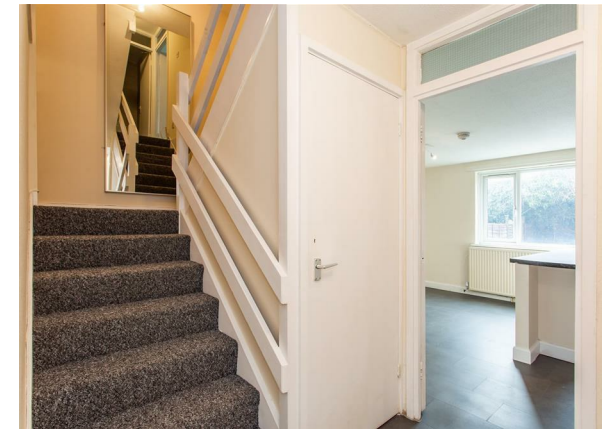
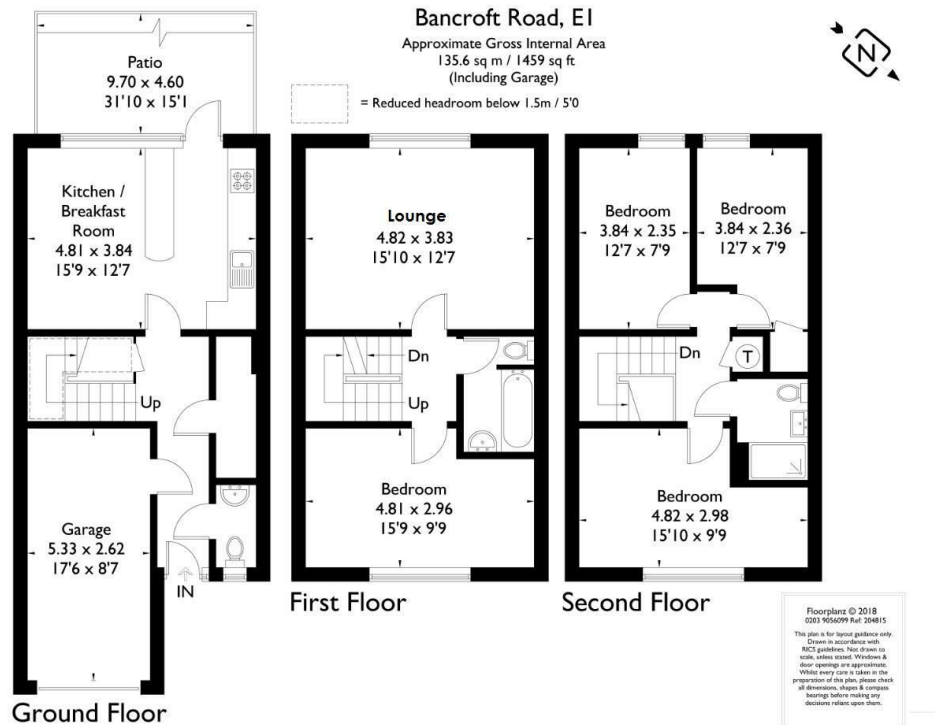
BANCROFT ROAD, MILE END E1

£3,400 PER MONTH

- Recently Refurbished
- Private Garage
- Close to 3 major Tube Stations
- Four Double Bedrooms
- Garden/ Patio
- Unfurnished







Minutes away from Stepney Green, Bethnal Green & Mile End tube station, W J Meade are pleased to present this recently refurbished four bedroom terraced house, presented over three floors. This property consists of an open plan kitchen/ dining room on the ground floor leading on to garden, with a separate WC and garage. On the first floor, there is a large lounge (overlooking the garden) and a double bedroom and separate bathroom. Moving up to the second floor, there is three further double bedrooms and another bathroom. Close to all local amenities, this property is ideal for professional sharers, available for long let.

All sizes are approximate. The Agent has not tested any apparatus, equipment, fixtures and fittings, or services and so cannot verify that they are in working order or fit for the purpose. A buyer is advised to obtain verification from their Solicitors or Surveyor. Photographs are for illustration purposes only and may depict items, which are not for sale or included in the sale price. References to tenure of a property are based upon information supplied by the vendor. The agent has not had sight of the title documents, a buyer is advised to obtain verification from their solicitor. Money Laundering Regulations 2003: Intending purchasers will be asked to produce identification, documentation at a later stage and we would ask for your co-operation in order that there will be no delay in agreeing the sale.

These particulars are intended to give a fair description of the property only and are in no way guaranteed, nor do of any contract. They are issued on the express condition that all negotiations are conducted through W.J. Meade Estate Agents. All subject to contract and to being unsold.

Service charge £n/a  
Ground rent £n/a  
Reserve fund £n/a  
n/a years lease  
Council tax band  
Current EPC Rating 67

