



## CARRIERS APARTMENT, STONEWAY WALK E3

£475,000

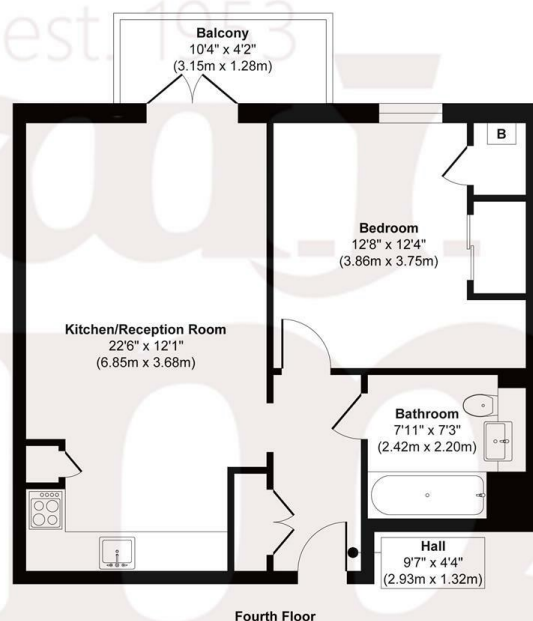
- Canal Side Living
- Good Size Balcony
- Open Plan Living Space
- Moments From Victoria Park
- West Facing Orientation
- Bicycle Storage Facilities

wj.  
meade





## Carriers Apartments



**Approx. Gross Internal Floor Area 541 sq. ft / 50.31 sq. m**  
Illustration for identification purposes only, measurements are approximate, not to scale.  
Produced by Elements Property



WJ Meade are delighted to present this stunning waterside one bedroom apartment, set on the fourth floor of a small luxury development on the join of the Hertford Union and Regents Canal. Arranged over 541 sq ft with a stylish open plan kitchen to reception with adjoining balcony to make the best of the water views and the treetops of Victoria Park, with the amenities of Roman Road and Bow Wharf on your doorstep, with Mile End and Bethnal Green stations.

All sizes are approximate. The Agent has not tested any apparatus, equipment, fixtures and fittings, or services and so cannot verify that they are in working order or fit for the purpose. A buyer is advised to obtain verification from their Solicitors or Surveyor. Photographs are for illustration purposes only and may depict items, which are not for sale or included in the sale price. References to tenure of a property are based upon information supplied by the vendor. The agent has not had sight of the title documents, a buyer is advised to obtain verification from their solicitor. Money Laundering Regulations 2003: Intending purchasers will be asked to produce identification, documentation at a later stage and we would ask for your co-operation in order that there will be no delay in agreeing the sale.

These particulars are intended to give a fair description of the property only and are in no way guaranteed, nor do of any contract. They are issued on the express condition that all negotiations are conducted through W.J. Meade Estate Agents. All subject to contract and to being unsold.

Service charge £1,968 pa  
Ground rent £200 pa  
241 years lease  
Council Tax Band C  
Current EPC Rating 86  
Tenure: Leasehold

