

Mike
Dobson



15 Parlington Meadow
Barwick In Elmet, Leeds, LS15 4PB

Offers Over £300,000

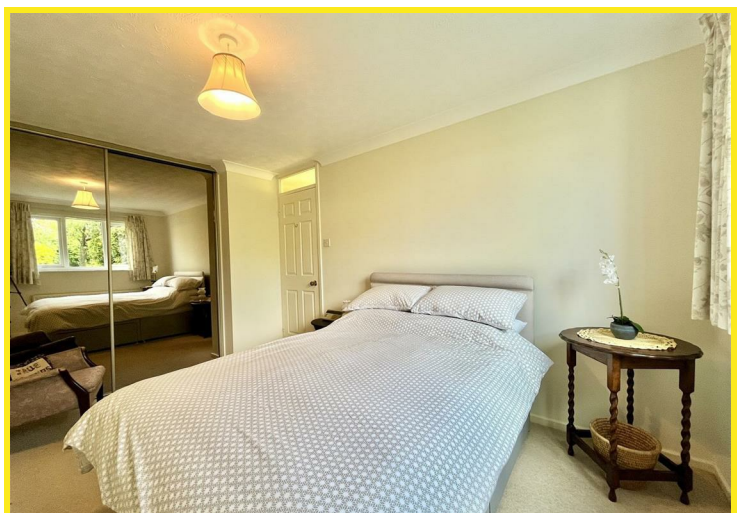
15 Parlington Meadow

Being sold with no onward chain is a very well presented two bedroom detached bungalow situated on a cul-de-sac street within the ever popular village of Barwick in Elmet.

The accommodation briefly comprises entrance hall, lounge/diner, kitchen, inner hallway, bedroom one, bedroom two, and shower room/W.C.

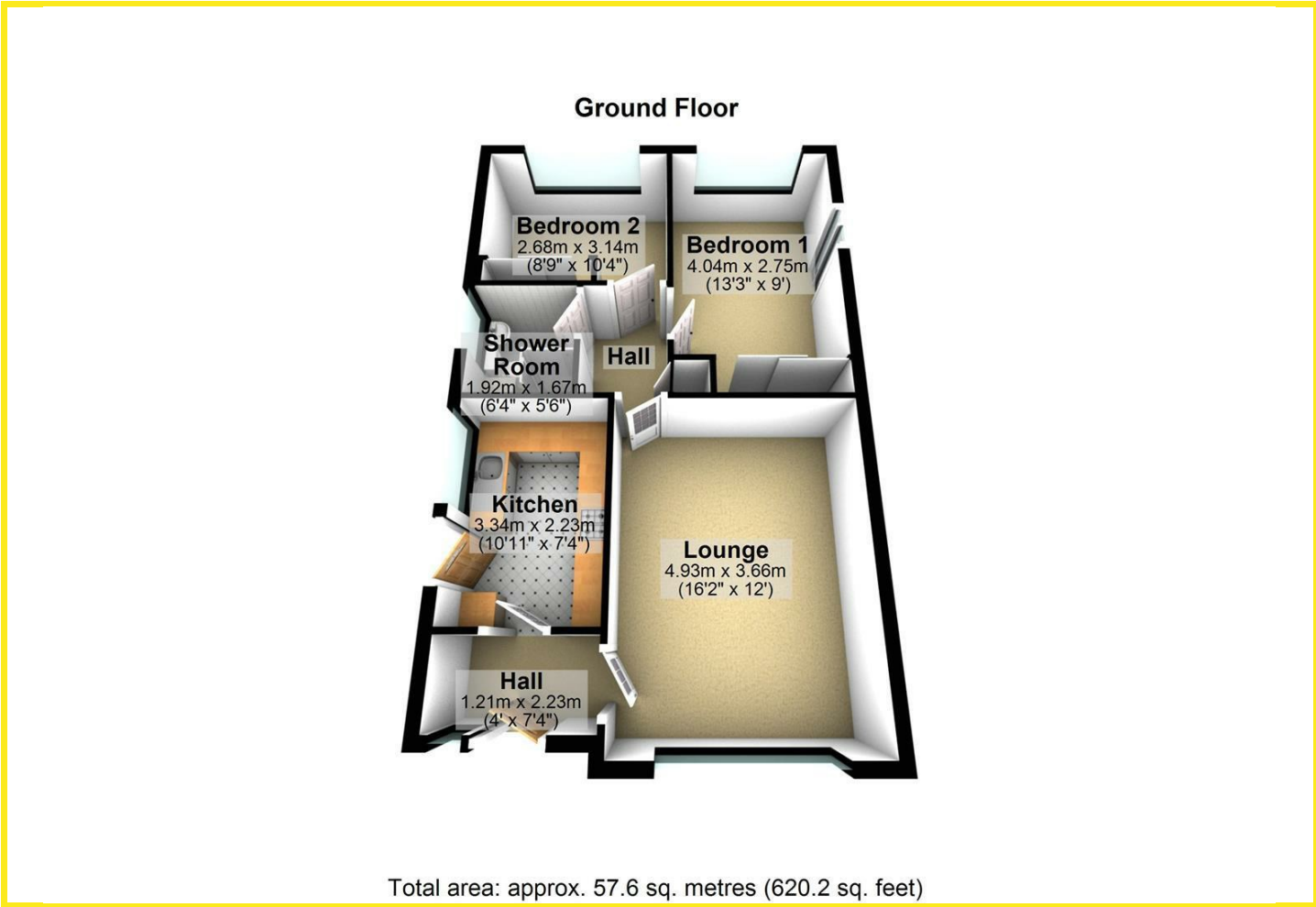
In addition the property has PVCu double glazed windows and entrance doors, gas fired central heating with Ideal combination boiler located in the storage cupboard in the inner hallway which has been serviced on an annual basis with the last service being completed November 2024, fitted kitchen with four ring hob, extractor over, built in oven, space for fridge/freezer and plumbing for washing machine, loft access which is fully insulated and partly boarded, fitted wardrobes to both bedrooms and large walk in shower cubicle to shower room.

Externally, to the front of the bungalow is a lawned garden with plants and shrubs to the borders. A block paved driveway provides ample off road parking and leads to a detached garage with up and over door, window, side access door having power and water tap inside. To the rear of the property is a lawned garden with a wide variety of plants, shrubs and trees with paved patio seating area.





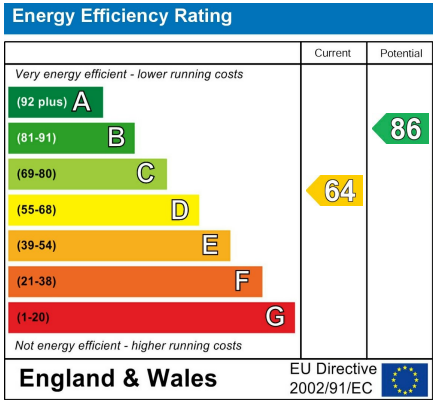
Floor Plan



Area Map



Energy Efficiency Graph



Directions

From our Garforth office turn right onto Main Street and continue to the traffic lights. Go straight ahead along Barwick Road and on reaching the village of Barwick In Elmet take the first right onto Parlington Meadow where the property can be found on the left hand side of the road.