

Mike
Dobson



32 Richmondfield Avenue

Barwick In Elmet, Leeds, LS15 4ET

Chain Free £290,000

32 Richmondfield Avenue

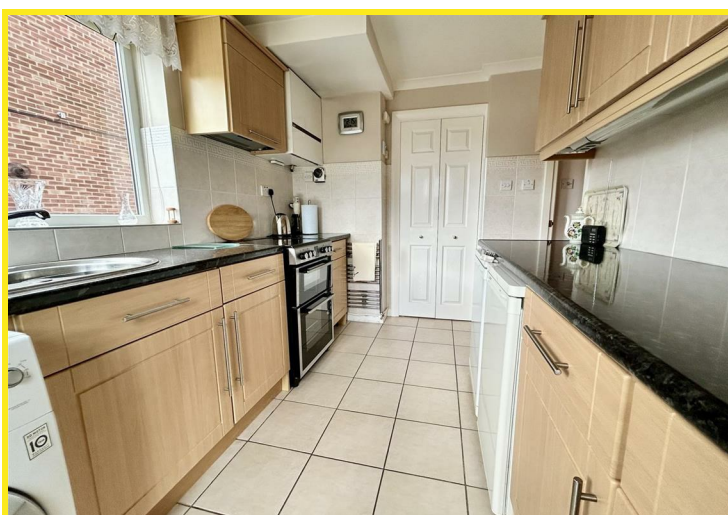
Nestled in the charming village of Barwick In Elmet, this delightful semi-detached house on Richmondfield Avenue offers a perfect blend of comfort and modern living. With three well-proportioned bedrooms, this property is ideal for families or those seeking extra space.

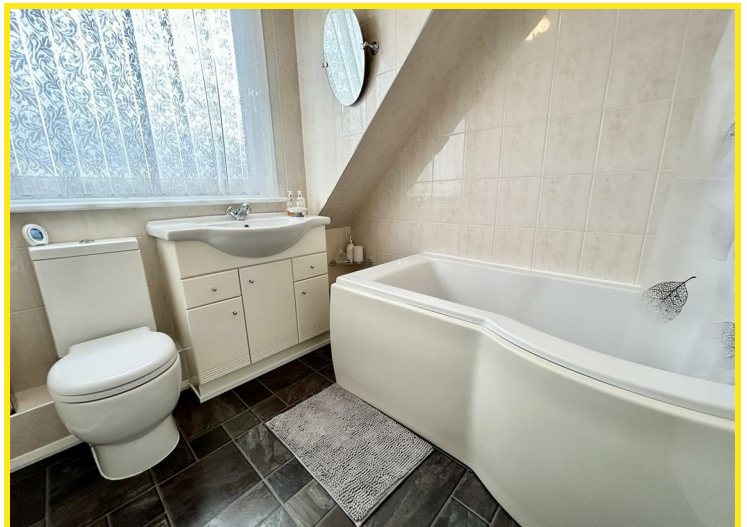
Upon entering, you are welcomed by a spacious lounge that seamlessly opens into a dining area, creating an inviting atmosphere for both relaxation and entertaining. The addition of a conservatory further enhances the living space, allowing for an abundance of natural light and a lovely view of the garden.

The property boasts a well-appointed kitchen and bathroom and benefits from PVCU double glazing throughout, as well as gas central heating, ensuring warmth and energy efficiency. For those with vehicles, there is off road parking available, along with a detached garage that features power and lighting, providing additional storage or workshop space.

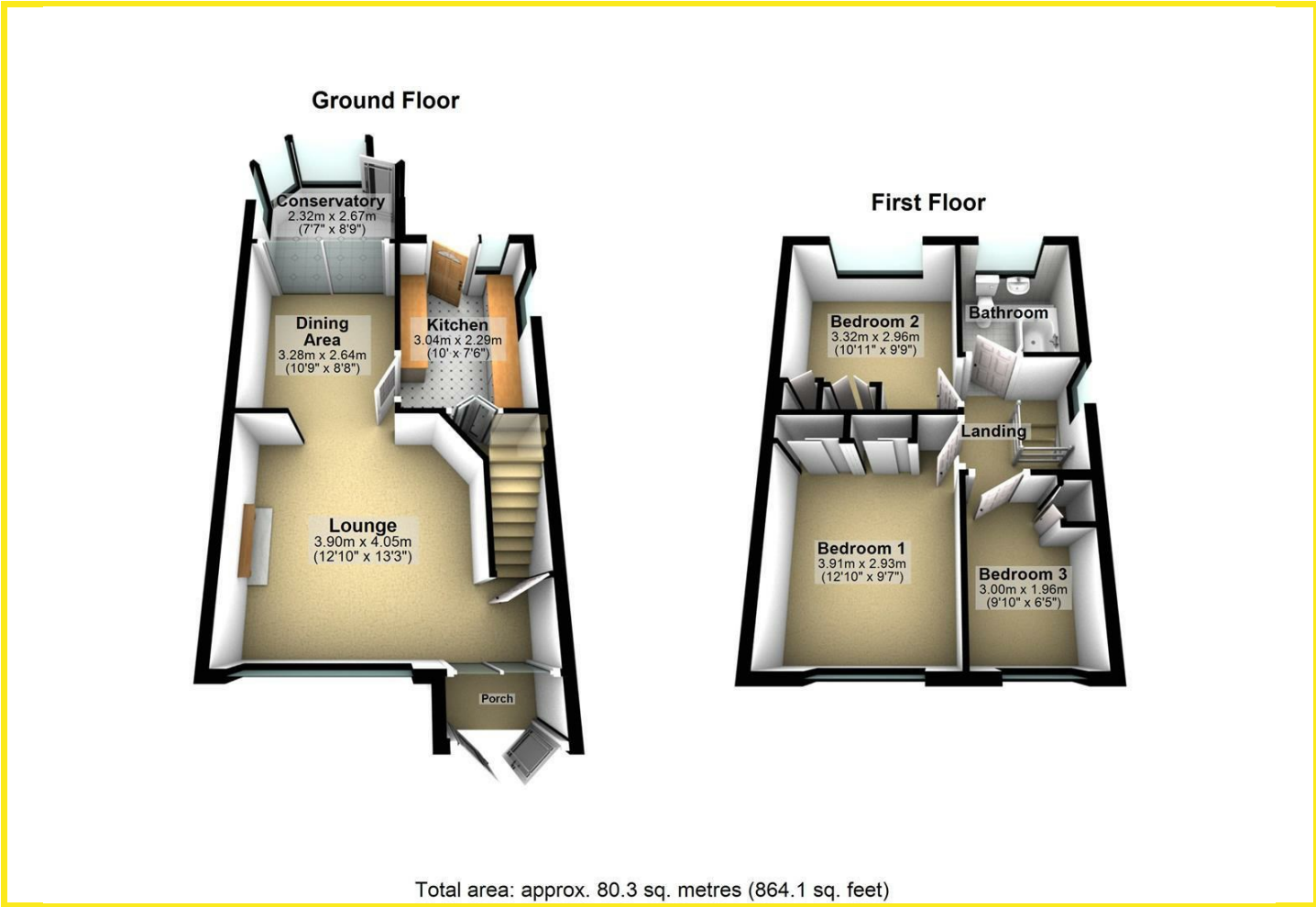
The enclosed rear garden is a true highlight, featuring a paved patio seating area perfect for al fresco dining, alongside a well-maintained lawn that offers a safe space for children to play or for gardening enthusiasts to indulge their passion.

Richmondfield Avenue is conveniently located, providing easy access to local amenities and transport links, making it an excellent choice for those looking to enjoy the tranquillity of village life while remaining connected to the vibrant city of Leeds. This property is a wonderful opportunity for anyone seeking a comfortable and spacious home in a desirable location.





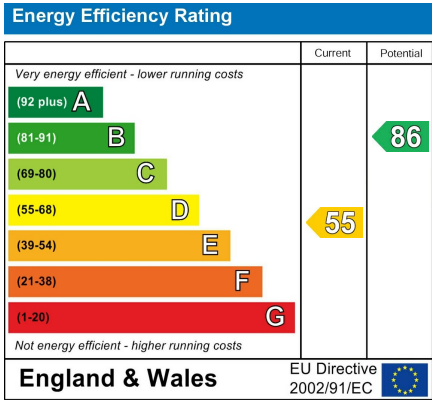
Floor Plan



Area Map



Energy Efficiency Graph



Directions

On entering the village of Barwick-in-Elmet from the direction of Garforth, Richmond Avenue is the second turning off Long Lane on the right hand side. Alternatively from Barwick-in-Elmet Main Street turn down Long Lane in the direction of Garforth. From this direction Richmondfield Avenue is the third turning off Long Lane on the left hand side.

These particulars, whilst believed to be accurate are set out as a general outline only for guidance and do not constitute any part of an offer or contract. Intending purchasers should not rely on them as statements of representation of fact, but must satisfy themselves by inspection or otherwise as to their accuracy. No person in this firms employment has the authority to make or give any representation or warranty in respect of the property.