

Mike
Dobson



13 Cyprus Terrace
Garforth, Leeds, LS25 1AP

£159,995

13 Cyprus Terrace

****CALLING ALL FIRST TIME BUYERS/INVESTORS****

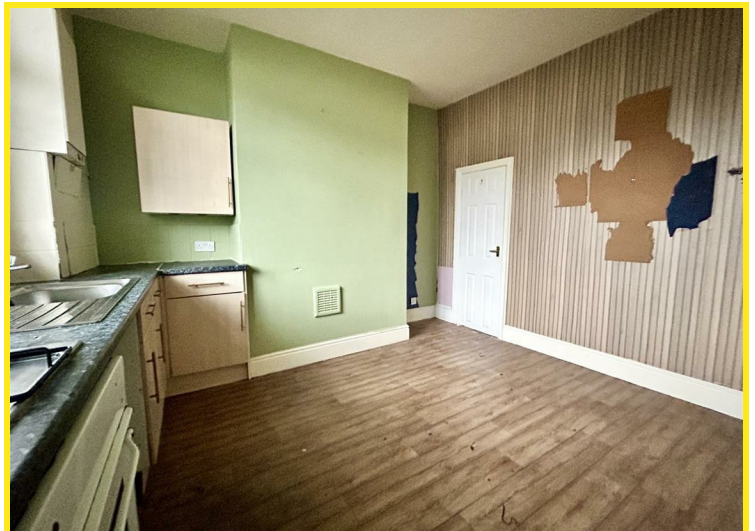
Being offered for sale and an ideal opportunity to purchase a two bedroomed mid terrace property ideally located within walking distance of Garforth Main Street, local transport facilities and schools.

The accommodation briefly comprises of kitchen/diner, inner lobby, lounge, first floor, two bedrooms and bathroom/WC

In addition the property has gas fired central heating with combination boiler, PVCu double glazed windows and entrance doors, fitted kitchen diner incorporating a four ring gas hob with extractor and built under oven with door leading down to a cellar. To the first floor are two good size bedrooms with bedroom two having a large built in storage cupboard to the over stairs. The bathroom has a three piece white suite with a shower over the bath.

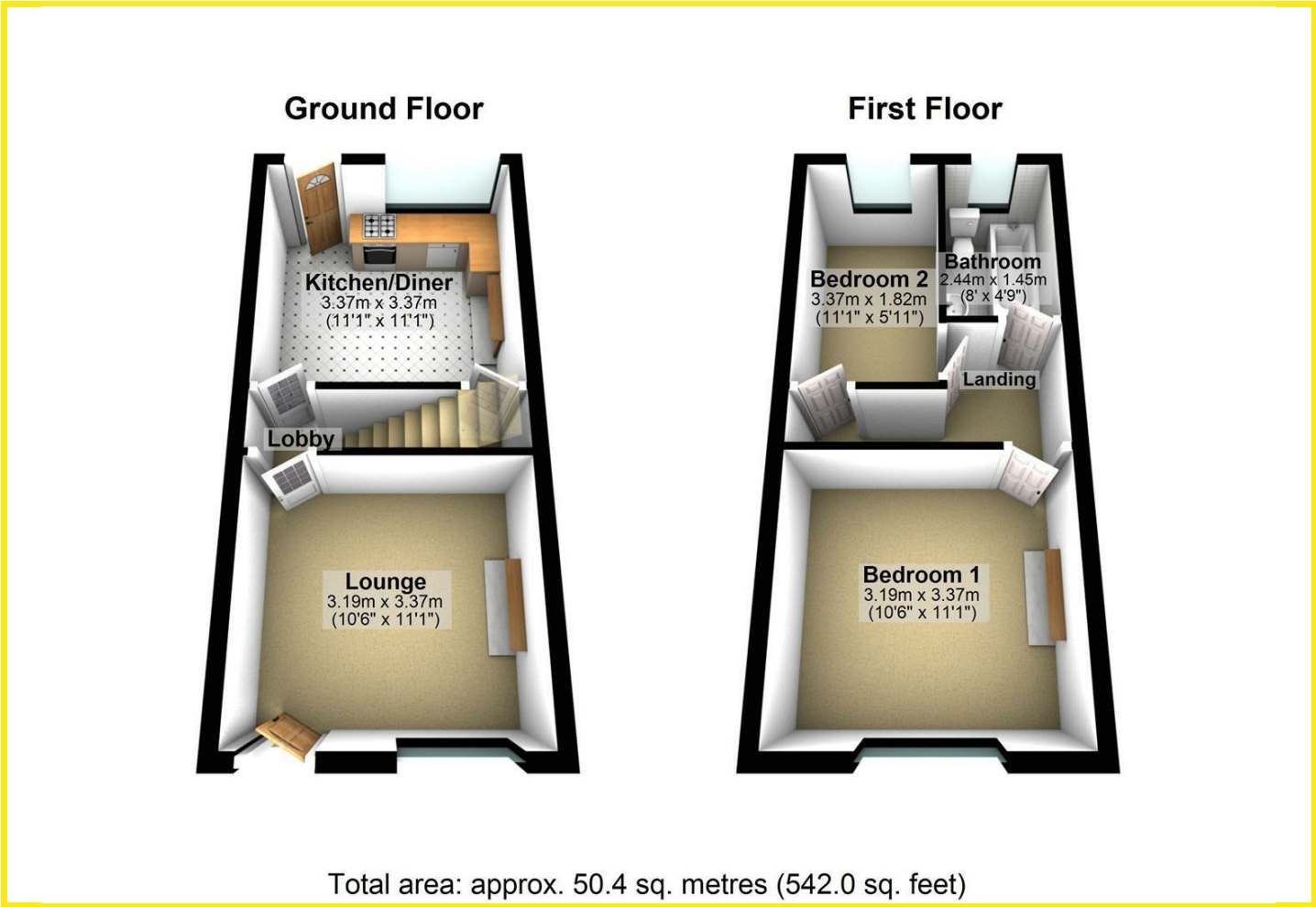
Enclosed garden to the front along with a detached garage which is in need of attention. Enclosed yard to the rear with timber shed and brick built outbuilding

The property does need modernisation , so don't miss out and book your viewing today





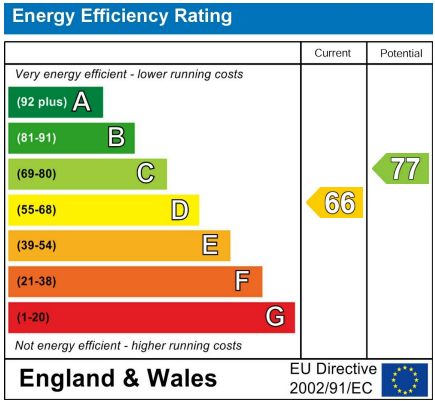
Floor Plan



Area Map



Energy Efficiency Graph



Directions

From our Garforth office turn right up Main Street, At the traffic lights at the top of Garforth Main Street turn left down Wakefield Road. Turn left on to Cyprus Road then right on to Cyprus Terrace.

These particulars, whilst believed to be accurate are set out as a general outline only for guidance and do not constitute any part of an offer or contract. Intending purchasers should not rely on them as statements of representation of fact, but must satisfy themselves by inspection or otherwise as to their accuracy. No person in this firms employment has the authority to make or give any representation or warranty in respect of the property.