

Mike
Dobson



39 Highfield Drive
Garforth, Leeds, LS25 1JY

Chain Free £305,000

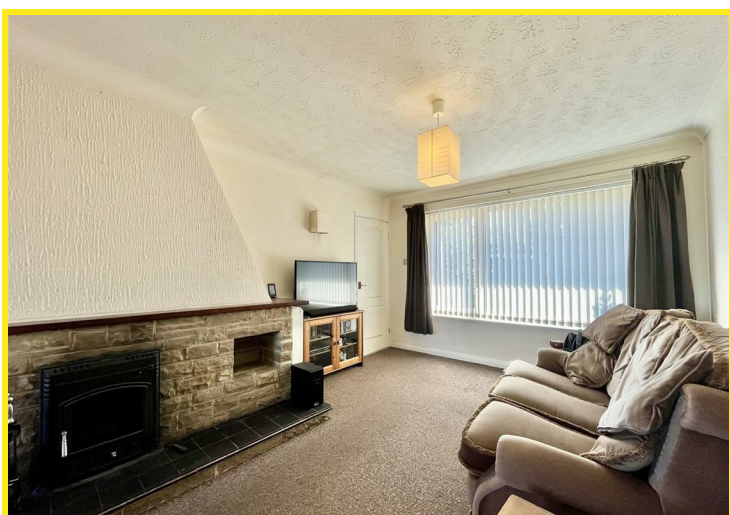
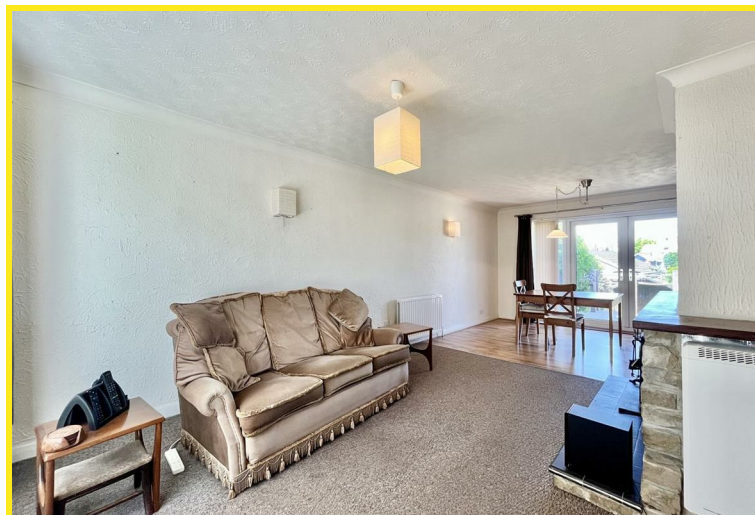
39 Highfield Drive

Being sold with no onward chain is an extended four bedroom semi-detached dormer style bungalow located on a cul-de-sac street on the Grange Estate within Garforth.

The accommodation briefly comprises entrance porch, entrance hall, lounge/diner, kitchen, inner hallway, ground floor bedroom four, ground floor bathroom, first floor landing, bedroom one, bedroom two, and bedroom three.

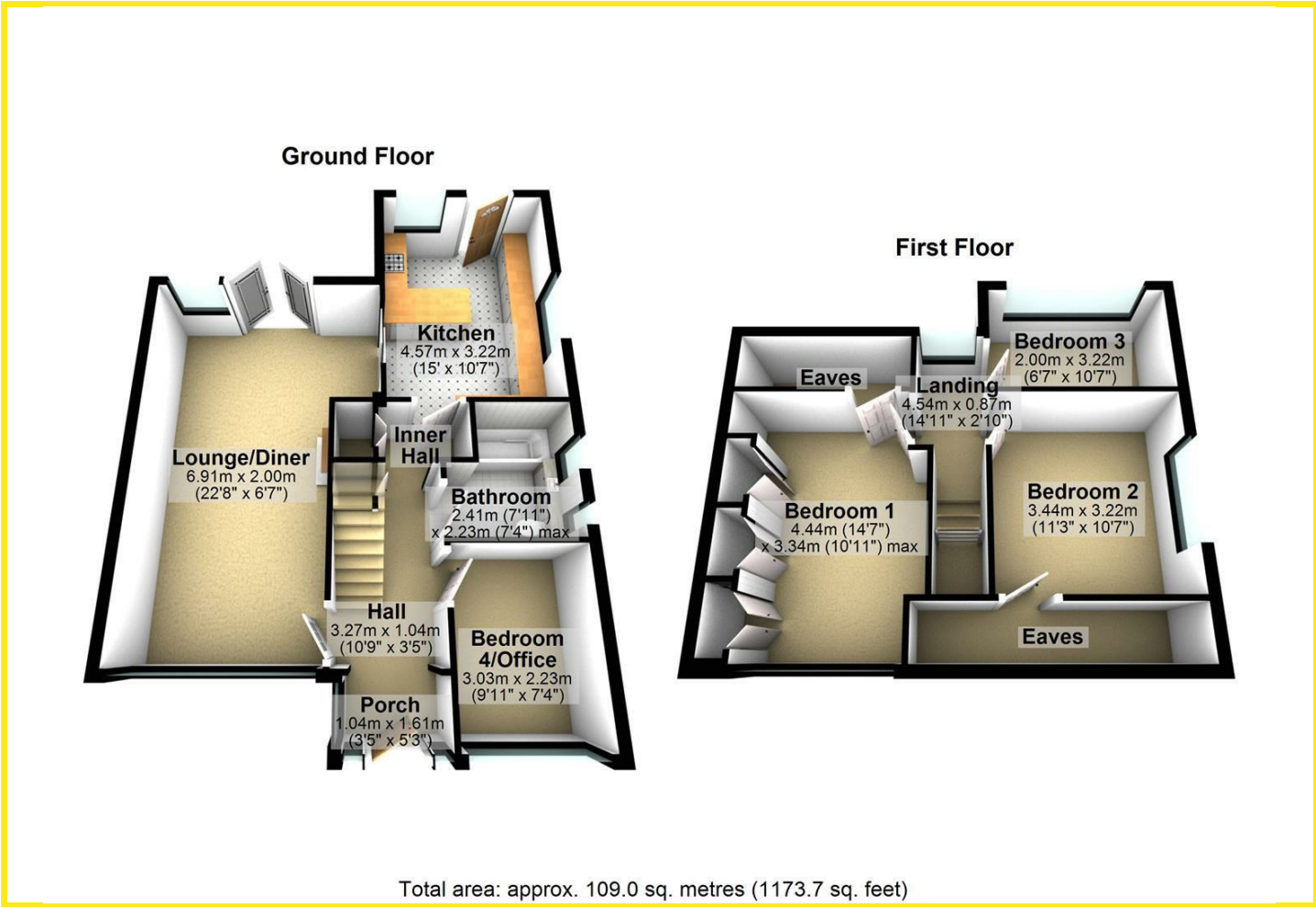
In addition the property has PVCu double glazed windows with the upstairs bedroom windows being energy efficient, PVCu double glazed entrance doors, gas fired central heating with newly installed condensing boiler in 2019, fully owned solar panels paying approximately £600 per year plus the use of the electricity it generates, fitted kitchen, ground floor bathroom with shower over the bath, ground floor bedroom four being used as an office, fitted wardrobes to bedroom one, loft access with pull down ladder and storage into the eaves.

Externally, to the front of the property is a paved area with plants and shrubs to the borders. A driveway provides ample off road parking for at least 5 vehicles and also has a car port. The driveway leads to a detached garage with up and over door, window and side access door. To the rear of the property is a lawned garden with composite decked seating area with steps down to paving leading to wooden decking.





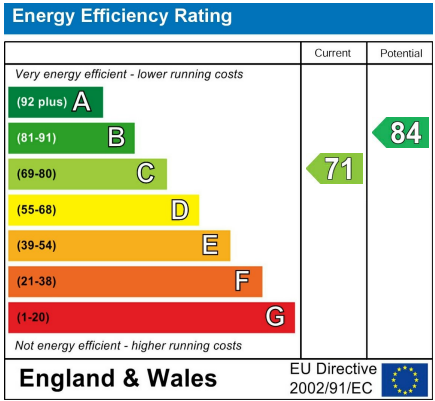
Floor Plan



Area Map



Energy Efficiency Graph



Directions

From our Garforth Office turn left on to Garforth Main Street and then turn on to Church Lane between the Library and the Medical Centre. Follow Church Lane and take the second right on to Grange Avenue. Follow Grange Avenue and take the fifth turning left on to Windermere Drive. At the 'T' junction continue diagonally across on to Burnham Road. Take the second turning left on to Pentland Drive. At the junction turn left on to Highfield Drive and the property can be found on the left hand side of the road.