

Mike
Dobson



32 Winder Way

Micklefield, Leeds, LS25 4FX

£425,000

32 Winder Way

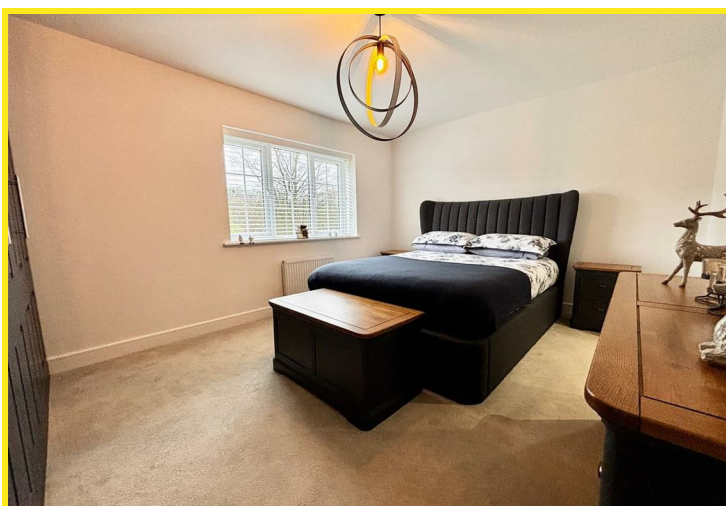
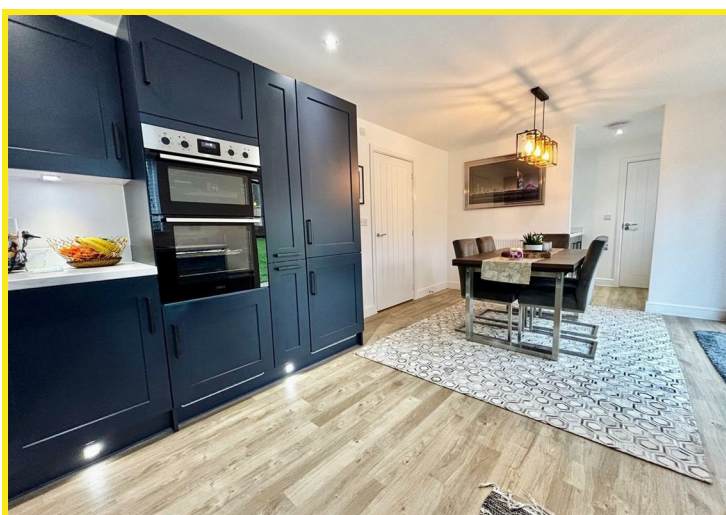
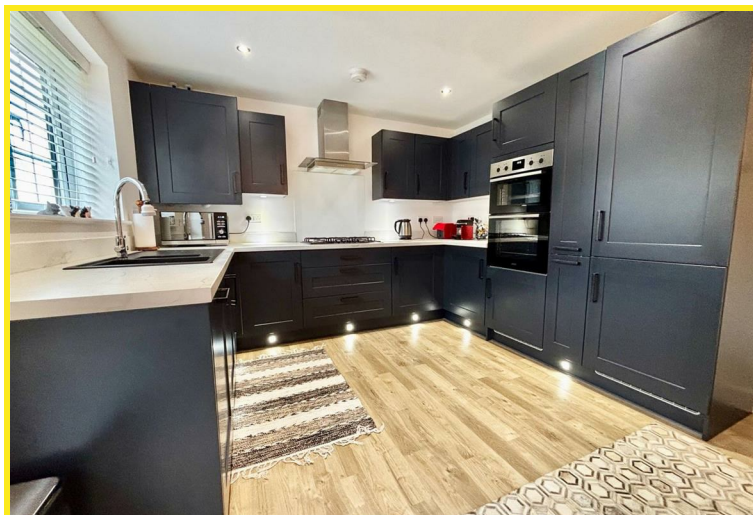
Nestled in the charming area of Winder Way, Micklefield, Leeds, this stunning four-bedroom detached house, built in 2023, offers a perfect blend of modern living and comfort. With a high standard of finish throughout, this property is designed to meet the needs of contemporary family life with an added bonus of being offered with no onward chain.

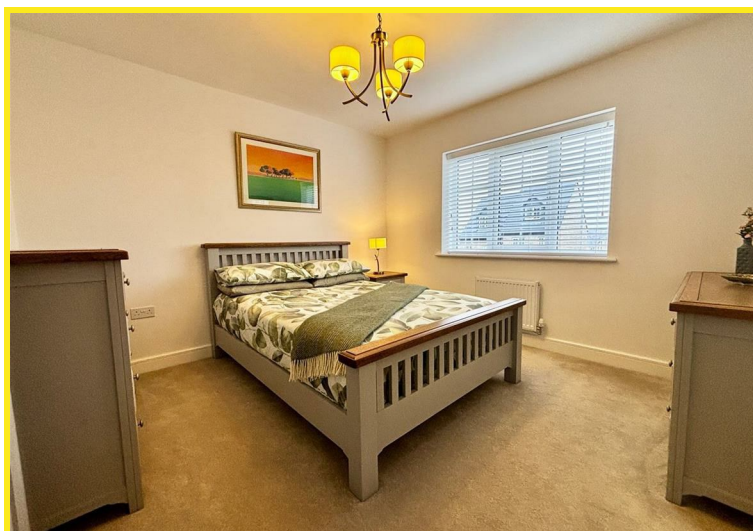
As you enter, you are welcomed into a spacious and stylish modern fitted kitchen and dining room, complete with integrated appliances that make cooking and entertaining a delight. The layout is both practical and inviting, ideal for family gatherings or hosting friends. Adjacent to the kitchen, a separate utility room houses an integrated washing machine, ensuring that household chores are conveniently managed. A ground floor WC adds to the practicality of the space.

The property boasts four generously sized double bedrooms, each designed with comfort in mind. The main bedroom features fitted wardrobes and a luxurious en-suite bathroom, providing a private retreat. The second bedroom also benefits from fitted wardrobes, offering ample storage space for your belongings.

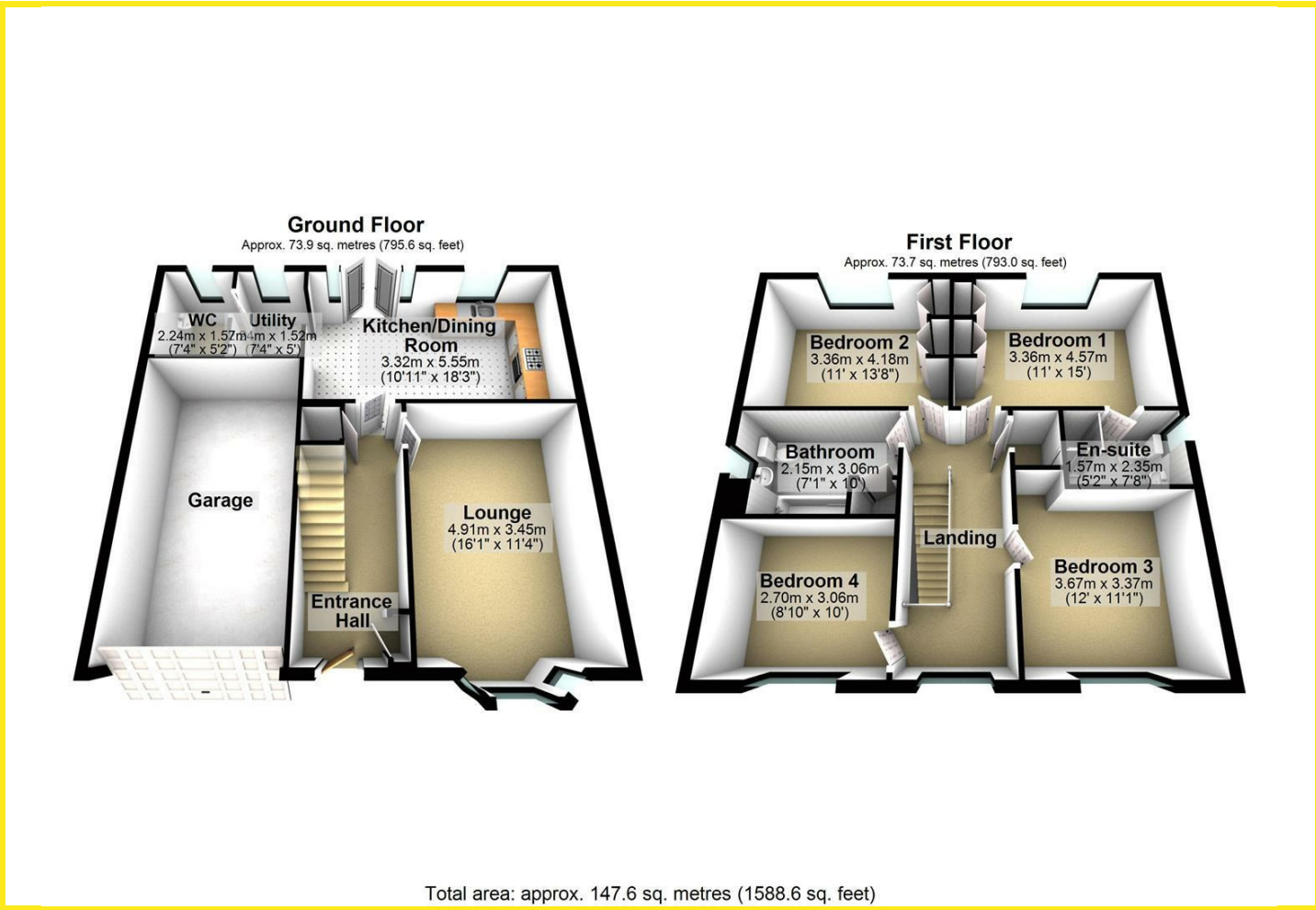
Outside, the property provides off-road parking for two cars, along with an integral garage that includes an EV charging point, catering to the needs of modern living. This home not only offers stylish interiors but also the convenience of contemporary amenities.

In summary, this exceptional detached house on Winder Way is a rare find, combining modern design with functional living spaces. It is perfect for families seeking a comfortable and stylish home in a desirable location. Don't miss the opportunity to make this beautiful property your own.





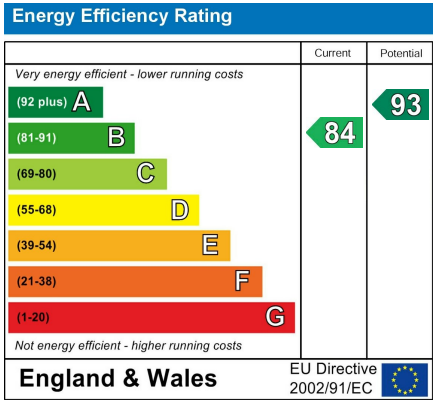
Floor Plan



Area Map



Energy Efficiency Graph



Directions

From the A63 Leeds/Selby Road turn into Mickfield on the Old Great North Road. On entering the village of Mickfield turn left just before the bridge onto Pit Lane, then your third left onto Winder Way where the property can be seen on the right hand side as indicated by the agents board.