

Mike
Dobson



3 Lowther Grove
Garforth, Leeds, LS25 1EN

£270,000

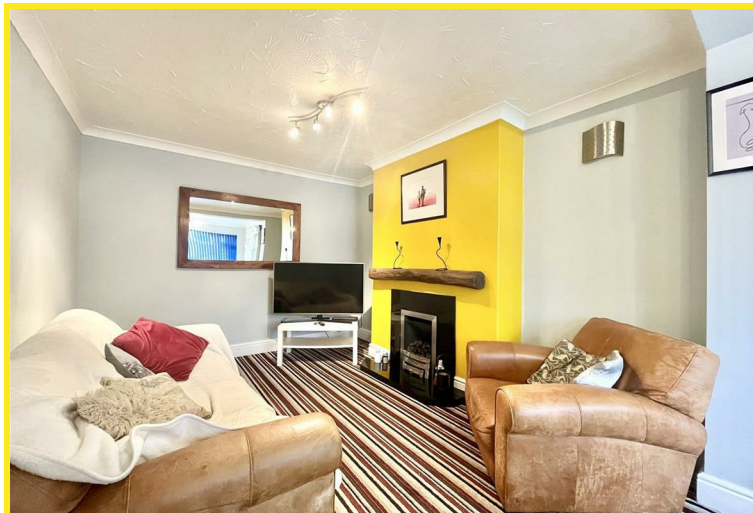
3 Lowther Grove

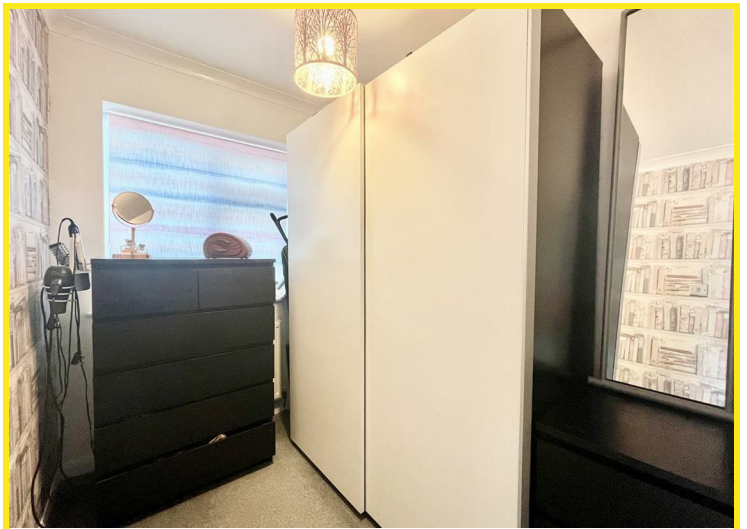
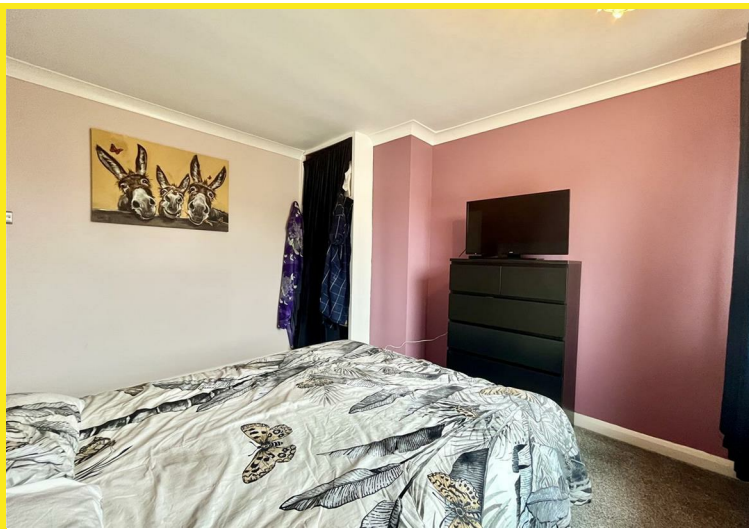
A fantastic opportunity to purchase an extended three bedroom semi-detached house located on the ever popular 'Lowthers' and within walking distance to Garforth Main Street.

The accommodation briefly comprises entrance hall, lounge, kitchen/diner, snug, first floor landing, bedroom one, bedroom two, bedroom three, and bathroom/W.C.

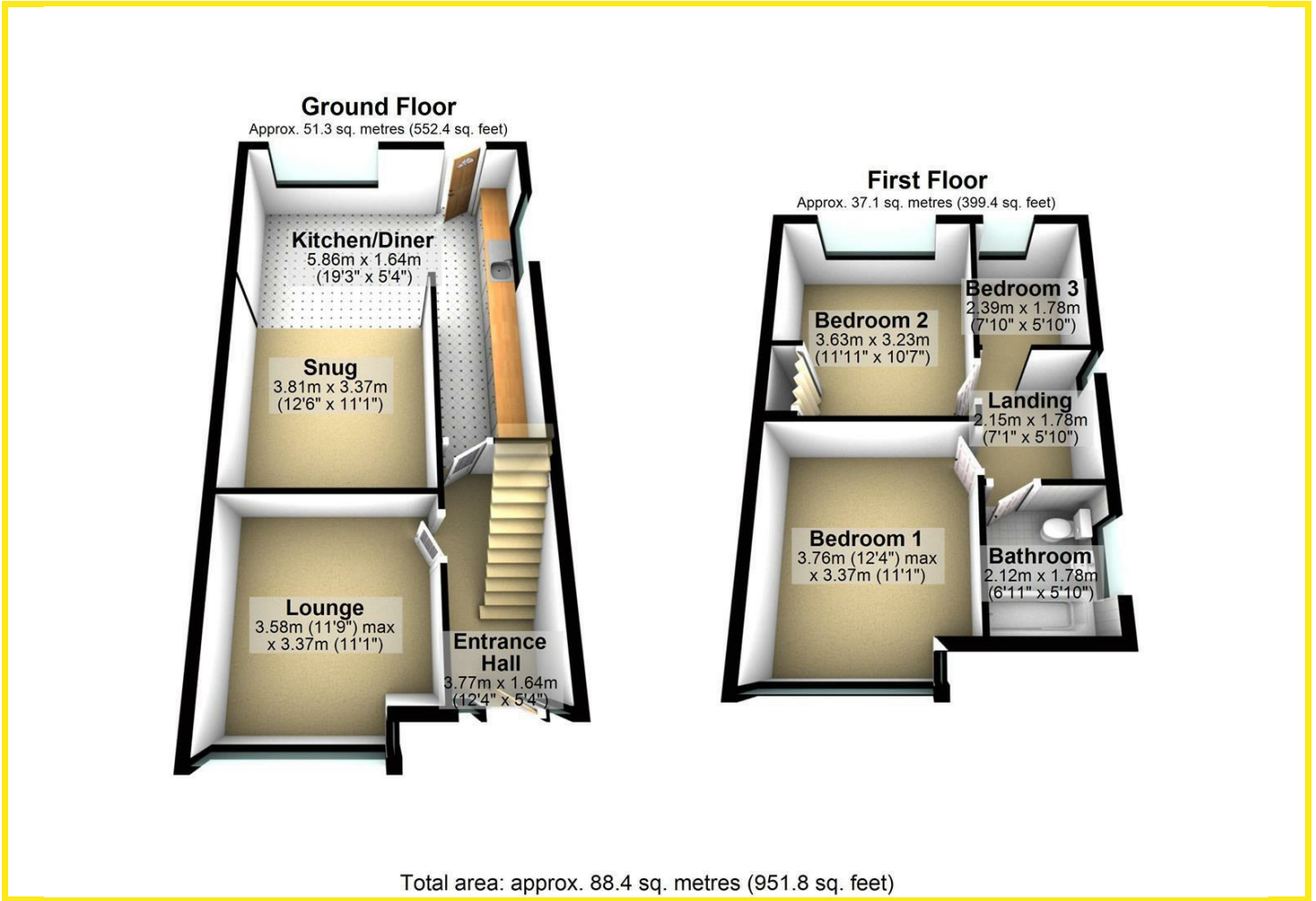
In addition the property has PVCu double glazed windows, composite front entrance door, PVCu double glazed rear entrance door, new roof approximately 8 years ago, gas fired central heating with Ideal combination boiler being serviced annually with the last serviced being completed October 2024, stunning fitted kitchen with integrated appliances including gas hob, double oven, microwave, fridge/freezer, dishwasher and washing machine, access point to the fully boarded loft, fitted storage space to bedroom two, and three piece bathroom white suite with shower over the bath.

Externally, to the front of the property is a washed pebble stone area and driveway which provides ample off road parking and leads to a wrought iron gate, which in turn leads to the rear of the property. To the rear of the property is a larger than average garden which has a lawned garden and paved patio seating area. There is a detached garage with up and over door, and has window, power and light inside.





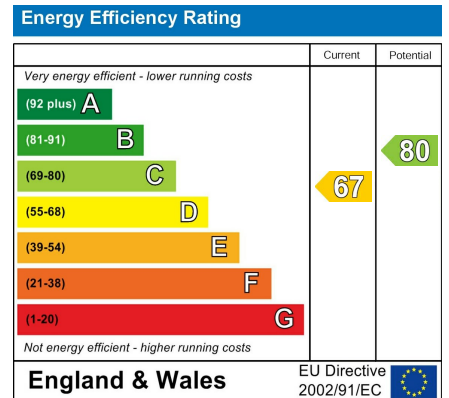
Floor Plan



Area Map



Energy Efficiency Graph



Directions

From the A63 Leeds/Selby Road turn into Garforth on Lidgett Lane by the Community College. After passing the College on the right hand side, take the first turning right on to Lowther Road. Lowther Grove is then the first turning right off Lowther Road.

These particulars, whilst believed to be accurate are set out as a general outline only for guidance and do not constitute any part of an offer or contract. Intending purchasers should not rely on them as statements of representation of fact, but must satisfy themselves by inspection or otherwise as to their accuracy. No person in this firm's employment has the authority to make or give any representation or warranty in respect of the property.

4 Main Street, Garforth, LS25 1EZ

Tel: 0113 2864276 Email: headoffice@mDOBSON.CO.UK <https://www.mDOBSON.CO.UK>