

Mike
Dobson



18 Purbeck Grove
Garforth, Leeds, LS25 1HP

Chain Free £240,000

18 Purbeck Grove

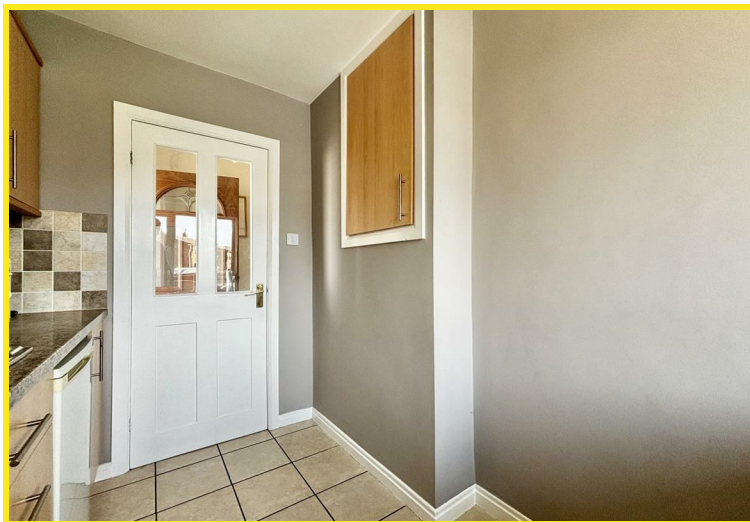
Nestled in the charming Purbeck Grove of Garforth, Leeds, this delightful semi-detached bungalow offers a cosy retreat for those seeking comfort and convenience. Boasting a spacious lounge with a captivating fire surround and inset gas fire, this property exudes warmth and character. The fitted kitchen, complete with a four-ring gas hob, is perfect for whipping up culinary delights. The property is also chain free!

Additionally, the gas central heating, equipped with an Ideal combination boiler and Hive control, provides efficient warmth throughout the home, ideal for those chilly British evenings. The property also benefits from PVCu double glazed windows throughout.

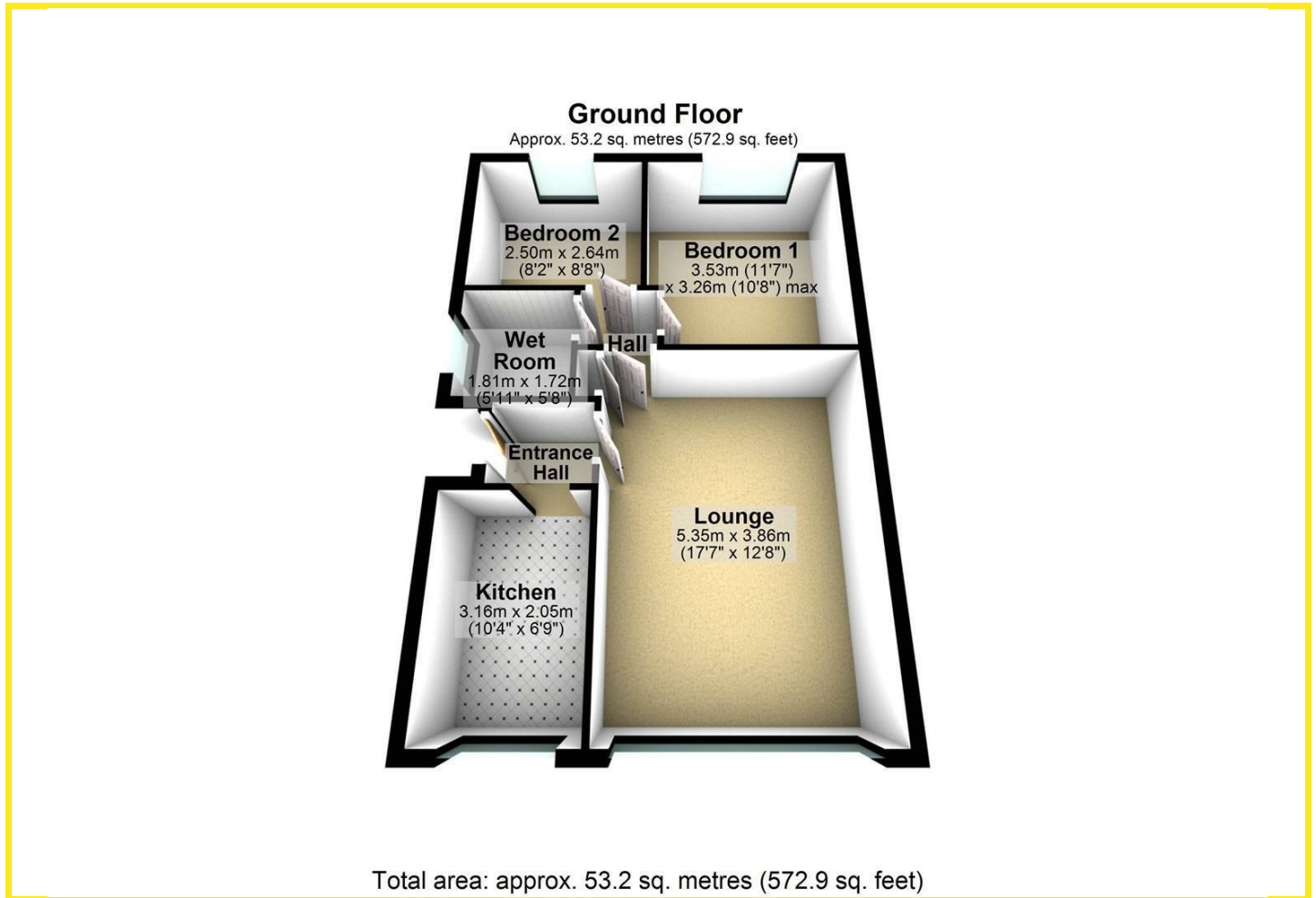
With two inviting bedrooms and a convenient wet room featuring a shower, pedestal wash basin, and low flush WC, this home is designed for easy living. Situated on a corner plot at the end of a tranquil cul-de-sac, privacy and peace are guaranteed, yet the property is within close proximity to local shops, schools and public transport links, giving you the best of both worlds.

Parking is a breeze with off road parking for multiple cars and a detached single garage, making hosting guests or simply coming home a stress-free experience. Don't miss the opportunity to make this charming bungalow your own slice of paradise in the heart of Garforth.





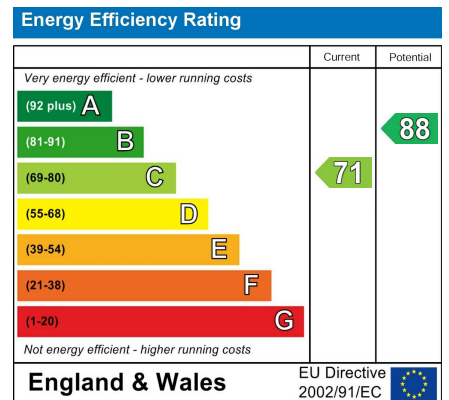
Floor Plan



Area Map



Energy Efficiency Graph



Directions

From Garforth Main Street turn on to Church Lane by the Library. Follow Church Lane and take the second turning right on to Grange Avenue. From Grange Avenue take the third turning left on to Derwent Avenue. Purbeck Grove is then the second turning right off Derwent Avenue. Alternatively from the A63 Leeds/Selby Road turn into Garforth on Ninelands Lane by the Fire Station. Follow Ninelands Lane and take the third turning left on to Derwent Avenue. From this direction Purbeck Grove is the sixth turning left off Derwent Avenue.

These particulars, whilst believed to be accurate are set out as a general outline only for guidance and do not constitute any part of an offer or contract. Intending purchasers should not rely on them as statements of representation of fact, but must satisfy themselves by inspection or otherwise as to their accuracy. No person in this firm's employment has the authority to make or give any representation or warranty in respect of the property.

4 Main Street, Garforth, LS25 1EZ

Tel: 0113 2864276 Email: headoffice@mdobson.co.uk <https://www.mdobson.co.uk>