

Mike
Dobson



1 The Park

Swillington, Leeds, LS26 8QB

Offers Around £575,000

1 The Park

A charming 1730's three bedroom detached cottage sat on an exceptionally large plot in a tucked away location in Swillington.

The accommodation comprises hall, W.C., kitchen, lounge, office, porch, conservatory, first floor landing, bedroom one, bedroom two, bedroom three, and bathroom/W.C.

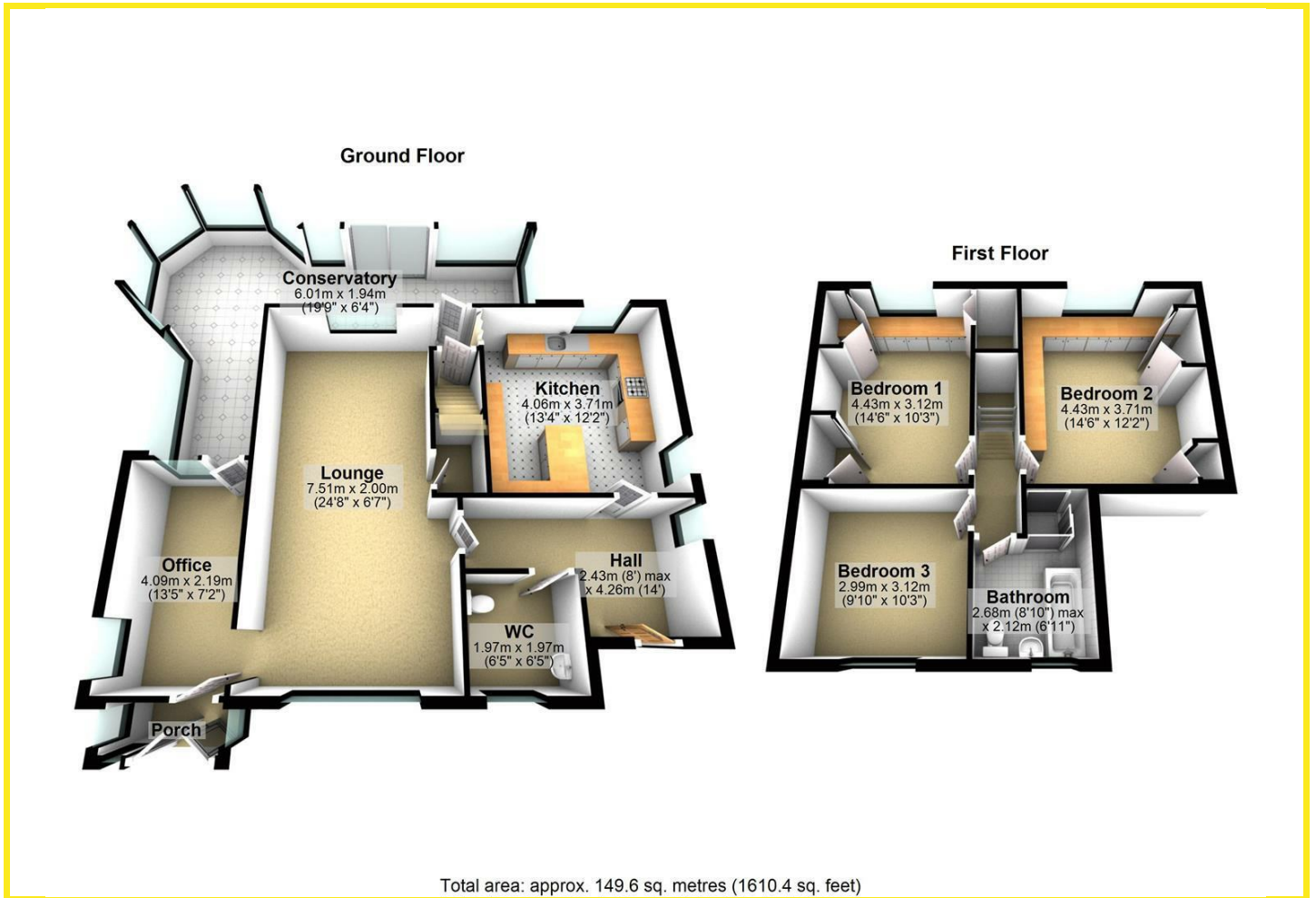
In addition the property has had a completely new Infinity plus kitchen installed and includes Bosch double fridge, freezer, ceramic hob, double oven, dishwasher and washing machine, PVCu double glazed windows and entrance doors, gas fired central heating with Worcester combination boiler installed approximately 5 years ago, alarm system, CCTV, fitted wardrobes to all bedrooms, stunning newly installed four piece white bathroom suite being fully tiled to the walls and floor and having a double walk in shower and bath. Multi fuel stove in lounge.

Externally, the property has extensive well kept gardens with a wide variety of plants, shrubs and trees. There is a block paved driveway which provides off road parking for at least two vehicles and leads to a detached garage providing useful storage.

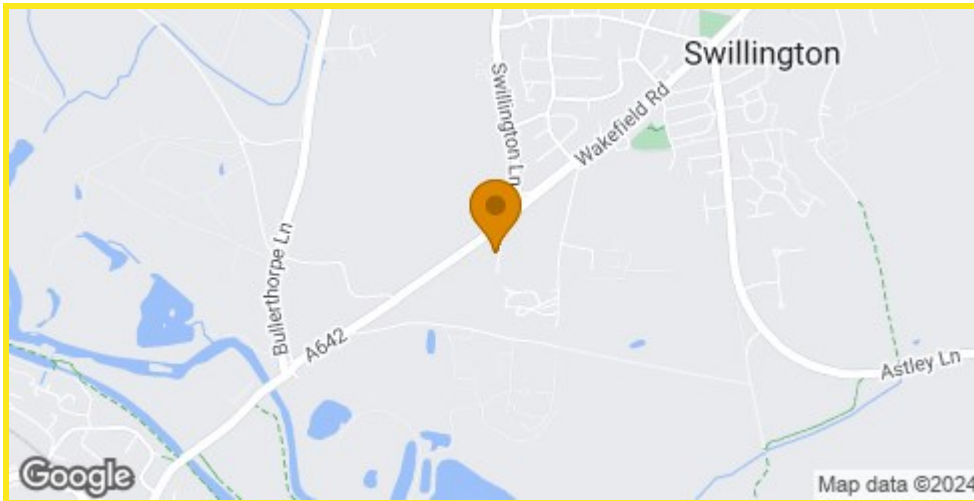




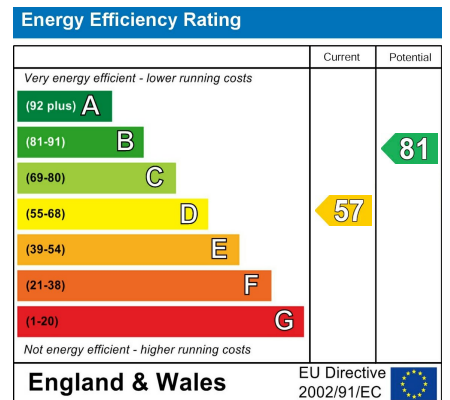
Floor Plan



Area Map



Energy Efficiency Graph



Directions

On entering the village of Swillington, proceed through the village and just after you have passed Swillington Lane on your right hand side, take your next turning left on to The Park. Follow this road and you will reach the property on the right hand side of the road.

These particulars, whilst believed to be accurate are set out as a general outline only for guidance and do not constitute any part of an offer or contract. Intending purchasers should not rely on them as statements of representation of fact, but must satisfy themselves by inspection or otherwise as to their accuracy. No person in this firm's employment has the authority to make or give any representation or warranty in respect of the property.

4 Main Street, Garforth, LS25 1EZ

Tel: 0113 2864276 Email: headoffice@mdobson.co.uk <https://www.mdobson.co.uk>