

Mike  
**Dobson**



**119 Conisbrough Grove**  
Garforth, Leeds, LS25 2QB

**£530,000**

# 119 Conisbrough Grove

Built by the renowned Redrow in 2020, this stunning four bedroom detached home exudes elegance and modernity. From the moment you step inside, you'll be greeted by an immaculately presented interior that is sure to impress even the most discerning buyer. Boasting spacious and modern rooms throughout, this property provides ample space for comfortable living.

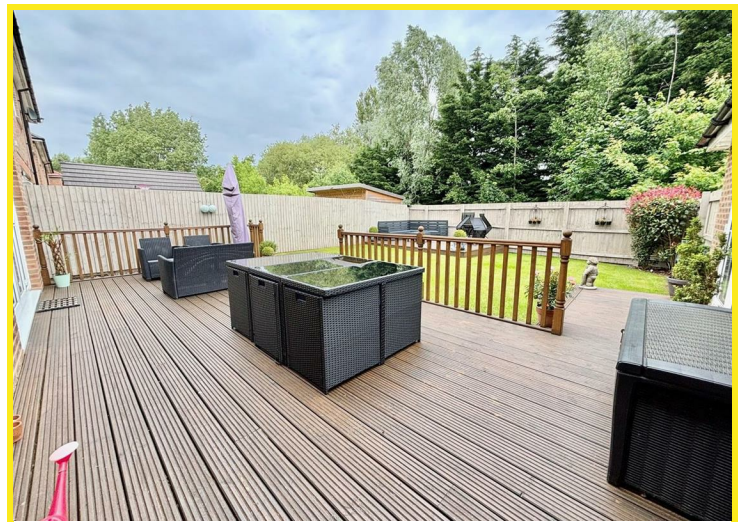
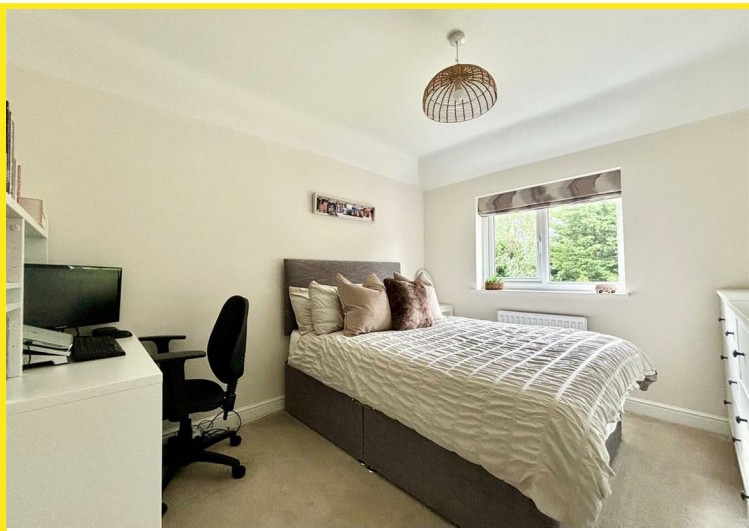
The heart of this home is undoubtedly the kitchen/dining/family room, complete with a modern range of units to high and low levels as well as a range of integrated appliances, that are as stylish as they are functional, to include fridge freezer, dishwasher, double electric oven and four ring induction hob. Imagine whipping up delicious meals in this culinary haven while enjoying the convenience of French doors that open to the rear garden, perfect for al fresco dining on warm summer evenings. There is also a modern utility room with complimentary units to the kitchen, complete with plumbing for a washing machine and space for a dryer.

Bedrooms one and two feature fitted wardrobes, offering plenty of storage space for your belongings. The main bedroom also has the added benefit of an en-suite shower room, fitted with a modern three-piece white suite, adding a touch of luxury to everyday living. The garage has been partly converted into a versatile room that can serve as a home office, playroom, or anything else you desire, leaving storage space to the front. With off-road parking available, convenience is at the forefront of this home.

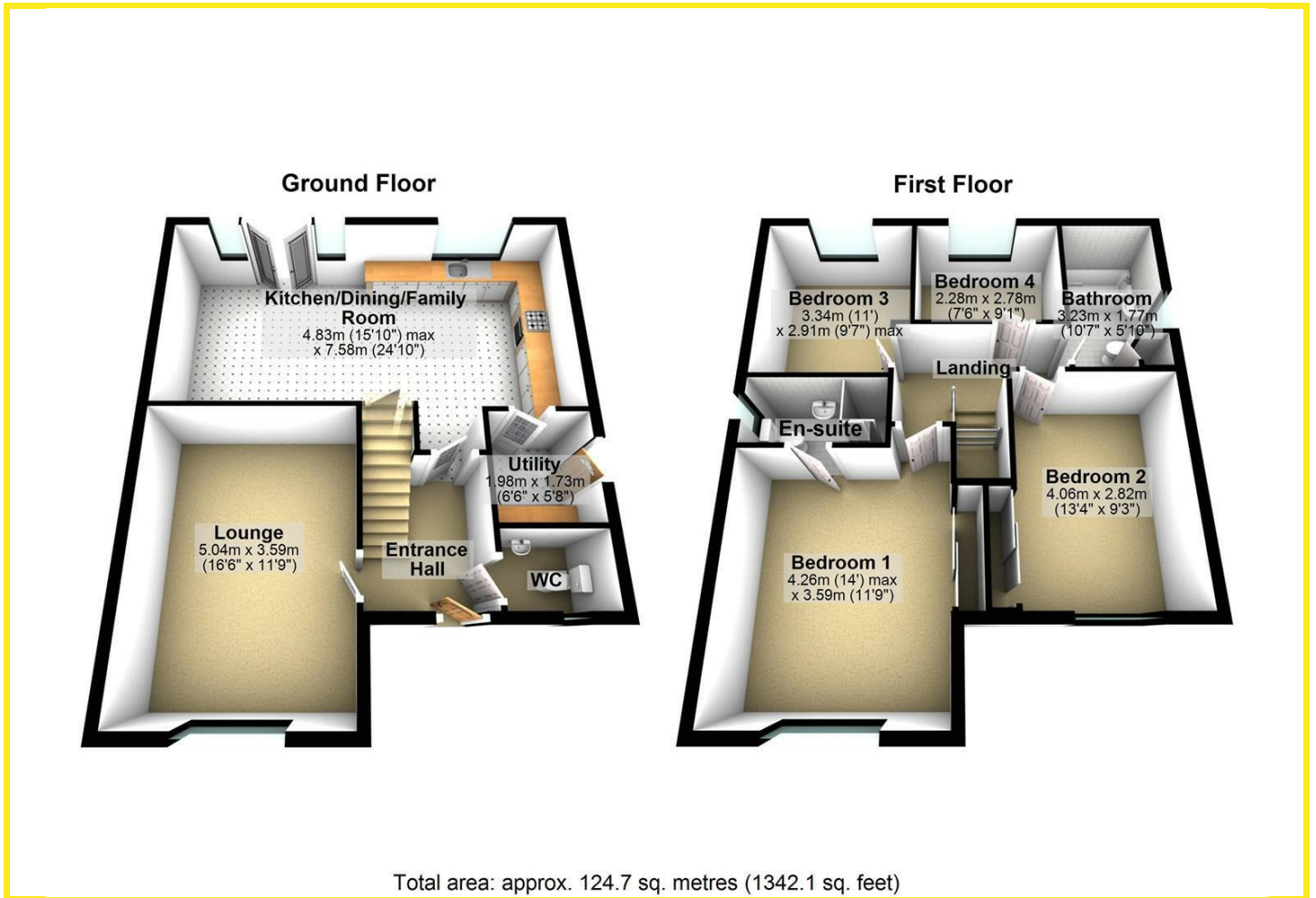
Outside, you'll find decked seating areas and a well-maintained lawn to the rear, perfect for enjoying the outdoors and entertaining guests. Whether you're looking for a peaceful retreat or a space to host gatherings, this property offers the best of both worlds.

If you're in search of a contemporary home that offers both style and comfort, look no further than this exquisite property on Conisbrough Grove. Don't miss the opportunity to make this house your home sweet home

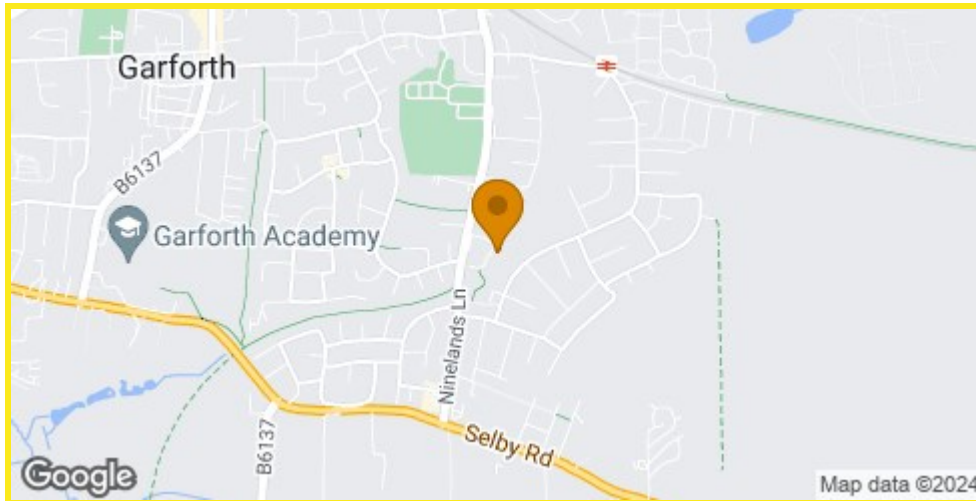




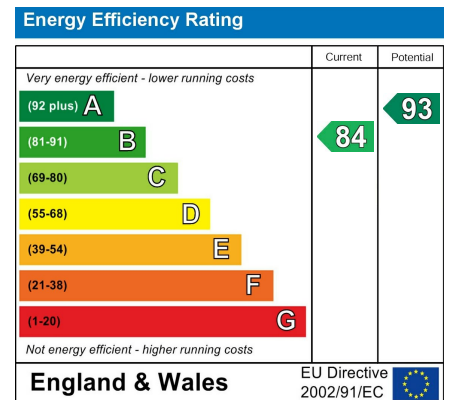
## Floor Plan



## Area Map



## Energy Efficiency Graph



## Directions

From our Garforth office turn left on to Main Street and take the first left on to Church Lane. Follow the road to the T junction and turn right on to Ninelands Lane. Continue on Ninelands Lane, taking your fifth left onto Pickering Place, continue to the junction onto Conisbrough Grove and the property can be found directly in front.

These particulars, whilst believed to be accurate are set out as a general outline only for guidance and do not constitute any part of an offer or contract. Intending purchasers should not rely on them as statements of representation of fact, but must satisfy themselves by inspection or otherwise as to their accuracy. No person in this firm's employment has the authority to make or give any representation or warranty in respect of the property.

4 Main Street, Garforth, LS25 1EZ

Tel: 0113 2864276 Email: [headoffice@mdobson.co.uk](mailto:headoffice@mdobson.co.uk) <https://www.mdobson.co.uk>