

TO LET



**HIGH STREET LEATHERHEAD, LEATHERHEAD, KT22
£1,500 PCM**



HIGH STREET LEATHERHEAD LEATHERHEAD, KT22

**Beautifully Presented Property Throughout
Open Plan Kitchen/Living Space
Spacious Living Accommodation
Integrated Appliances • Fitted Bathroom
Short Walking Distance to Leatherhead Br Station
Central Leatherhead Location
Video Entry System • EPC Rating C
Council Tax Band B
Deposit £1,730.76 Holding Deposit £346.15**

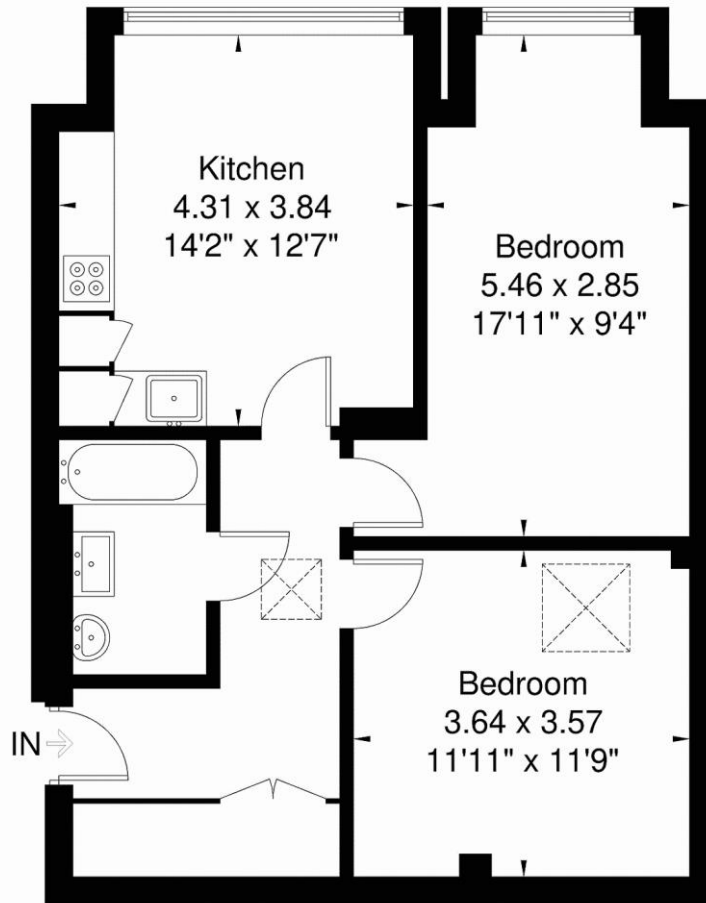


Situated in the heart of Leatherhead town centre, top floor two-bedroom contemporary apartment. Located within a short distance from Leatherhead BR Station. This beautifully presented property features two double bedrooms, an open-plan kitchen/living space with integrated appliances, a modern fitted bathroom, and a video entry system. Unfurnished and available early September.



High Street KT22

Approximate Gross Internal Area = 60.5 sq m / 651 sq ft



Third Floor

60.5 sq m / 651 sq ft



www.epc.uk.com info@epc.uk.com

Not to scale, for guidance only and must not be relied upon as a statement of fact. All measurements and areas are approximate only and have been prepared in accordance with the current edition of RICS code of Measuring Practice.

HUGGINS EDWARDS & SHARP RESIDENTIAL LETTINGS AND MANAGEMENT IS A TRADING NAME OF HES RESIDENTIAL LTD, A COMPANY REGISTERED IN ENGLAND & WALES. REGISTERED NUMBER 07165611. REGISTERED OFFICE: 30-34 NORTH STREET, HAILSHAM, BN27 1DW. HES RESIDENTIAL LTD FOR THEMSELVES AND FOR VENDORS OR LESSORS OF THIS PROPERTY WHOSE AGENTS THEY ARE GIVE NOTICE THAT THE PARTICULARS CONTAINED HERE ARE SET OUT AS GENERAL OUTLINE ONLY FOR THE GUIDANCE OF INTENDED PURCHASERS OR LESSEES, AND DO NOT FORM PART OF ANY OFFER OR CONTRACT. ALL DESCRIPTIONS, DIMENSIONS, REFERENCE TO CONDITION AND NECESSARY PERMISSIONS FOR USE AND OCCUPATION, AND OTHER DETAILS ARE GIVEN WITHOUT RESPONSIBILITY AND ANY INTENDING PURCHASERS OR LESSEES SHOULD NOT RELY ON THEM AS STATEMENTS OR REPRESENTATIONS OF FACT BUT MUST SATISFY THEMSELVES BY INSPECTION OR OTHERWISE AS TO THE CORRECTNESS OF EACH OF THEM.

Further information on Deposit and Administration Fees available at www.hugginsedwards.co.uk/rental_information

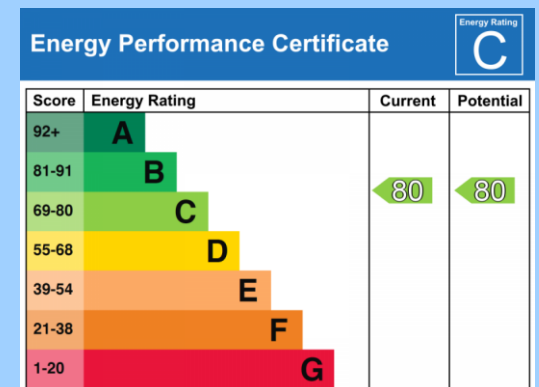
**VIEWING STRICTLY BY APPOINTMENT ONLY
THROUGH THE AGENTS HUGGINS EDWARDS &
SHARP**

LEATHERHEAD LETTINGS OFFICE

3 BRIDGE STREET, LEATHERHEAD, KT22 8BL

01372 455244

info@hesresidential.co.uk



www.hugginsedwards.co.uk

