



**Green End, Cobham Way,
East Horsley, Surrey, KT24 5BH**

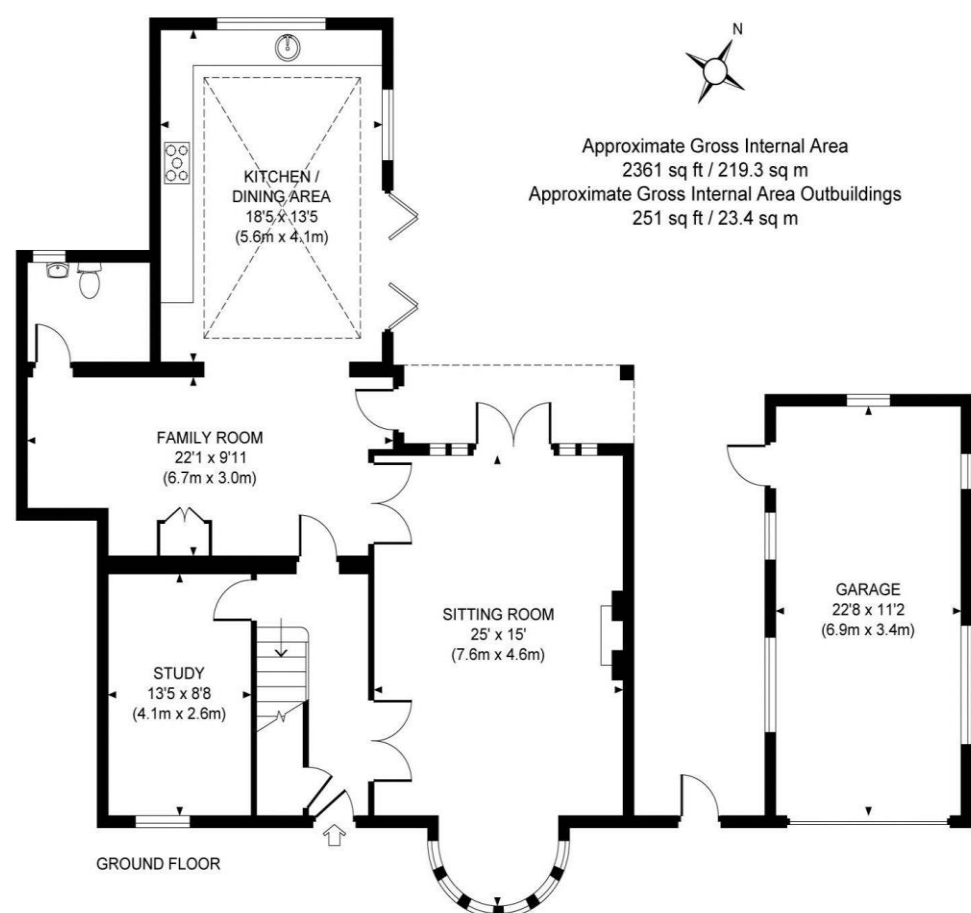
Guide Price £1,575,000 Freehold

Directions

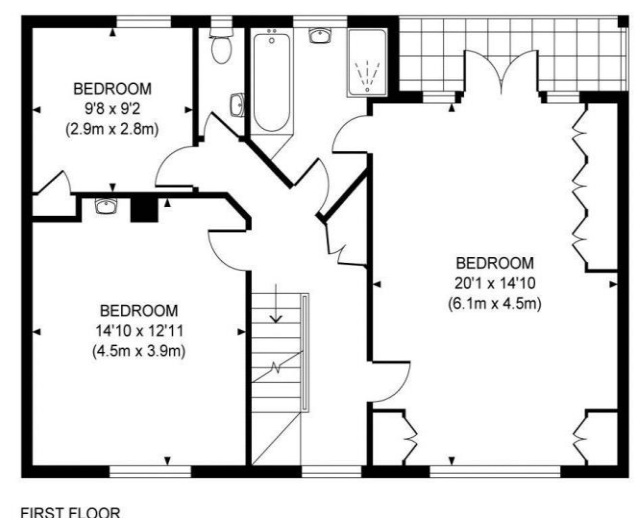
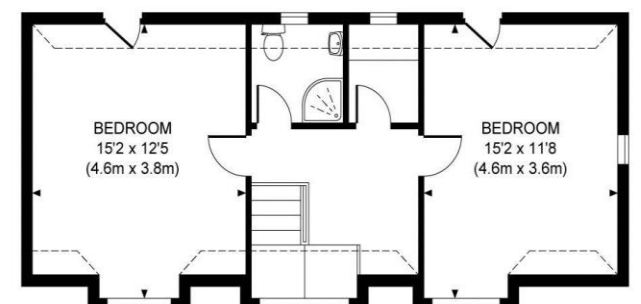
From our office in East Horsley turn left into Cobham Way and follow the road round to the left and then to the right and you will find Green End on your left hand side.

Local Authority

Guildford Borough Council: 01483 505050



Approximate Gross Internal Area
2361 sq ft / 219.3 sq m
Approximate Gross Internal Area Outbuildings
251 sq ft / 23.4 sq m



**Green End, Cobham Way,
East Horsley, Surrey, KT24 5BH**

In a private, gated road within a short walk from the centre of East Horsley village and station, a semi-detached five bedroom/two bathroom spacious family home with large garden and garage.



THE PROPERTY

A wonderful opportunity to purchase a spacious character home situated on a mature plot, in a prime private road location just a short walk from the village and station. The house was originally built in the 1950's albeit built in the style of the 1920's to match neighbouring properties in the area. The accommodation is over three floors and includes a large and welcoming drawing room, a good size study, cloakroom and lovely kitchen/breakfast/family room on the ground floor. On the first and second floors there are five bedrooms and two bathrooms, the master with a balcony over the rear gardens, in addition to a spacious guest bedroom. The large gardens offer excellent privacy and there is a detached garage with ample parking to the front. Cobham Way is a much sought after gated private road, with no through traffic and yet is just a couple minutes' walk down to the village centre with a wide range of local facilities and station providing a commuter service to London Waterloo and Guildford. NO OWNWARD CHAIN Council Tax Band G.

