



**Lake View, Ockham Road South,
East Horsley, Surrey, KT24 6RZ**

£695,000 Freehold

Directions

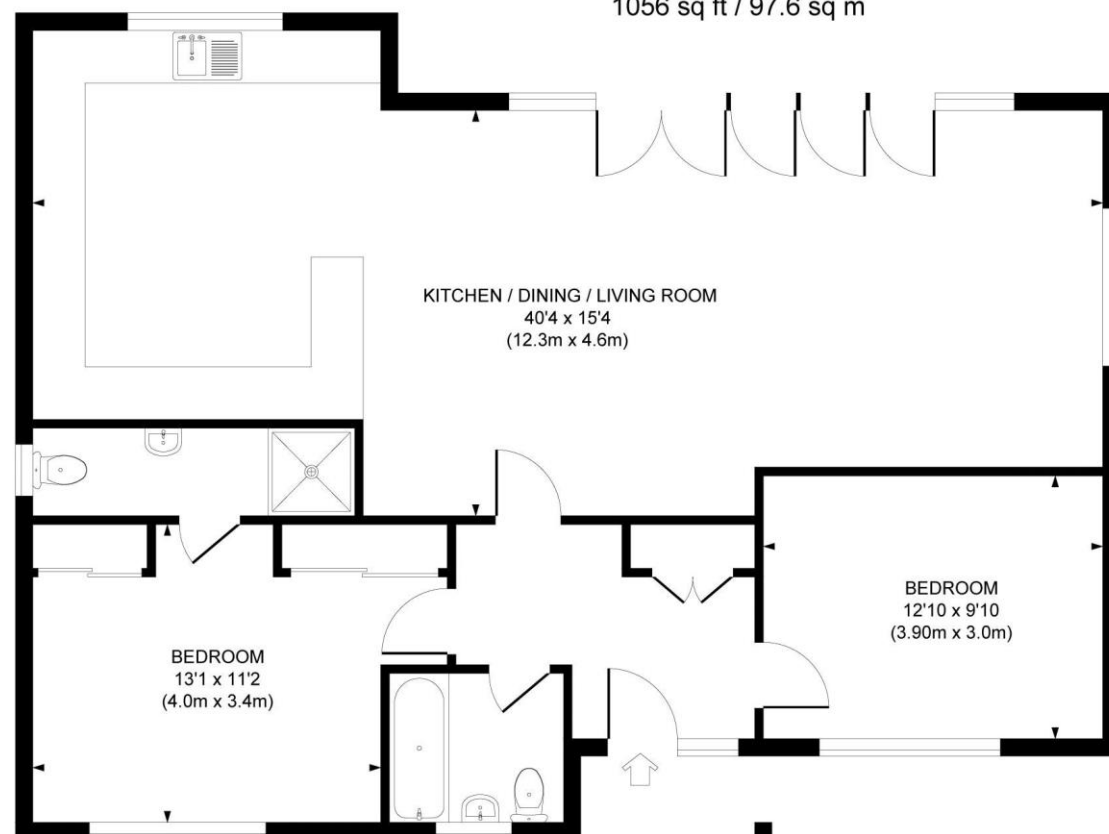
From our office in East Horsley turn left along the Ockham Road South and after nearly a mile Lake View will be found on your left hand side a short distance before Bishopsmead Parade.

Local Authority

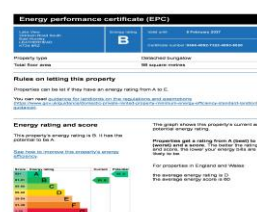
Guildford Borough Council: 01483 505050



Approximate Gross Inter Area
1056 sq ft / 97.6 sq m



This plan is for layout guidance only. Not drawn to scale unless stated. Whilst every care is taken in the preparation of this plan, please check all dimensions, shapes and compass bearings before making decisions reliant upon them.



**Lake View, Ockham Road South,
East Horsley, Surrey, KT24 6RZ**

Set in a wonderful setting on a lake, a detached spacious two bedroom bungalow with off-street parking and only a short distance from local shops and under a mile from East Horsley village and station.



THE PROPERTY

A spacious two bedroom detached bungalow built in 2017 occupying a wonderful position overlooking Timbers Lake and situated close to local shops and under a mile from the village center and station. There is a welcoming entrance hall, which opens to the main living/dining room/kitchen. The living/dining areas have two sets of sliding bifold doors to the rear terrace and with fabulous views across the lake. This room is open to the kitchen comprehensively fitted and again with views to the rear. There are two double bedrooms, the master benefiting from an en-suite shower room and a further shower room, which is large enough to be changed to a bathroom if preferred. Outside to the front is ample parking, whilst the rear has both terrace and decking areas and well stocked flower and shrub borders. The aspect over the lake with woodland surrounding provides a delightful and peaceful environment with an abundance of wildlife, including visiting swans, moorhens, and mandarin ducks. Council Tax Band F.

