



Loates Lane Watford WD17

£1,250 Per Month (Furnished) - 2020-11-17



Loates Lane, Watford, Hertfordshire, WD17 £1,250 Per Month (Furnished)

Two Bedrooms, Two Bathrooms, Balcony, Off Street Parking, Electric Heating, Furnished.

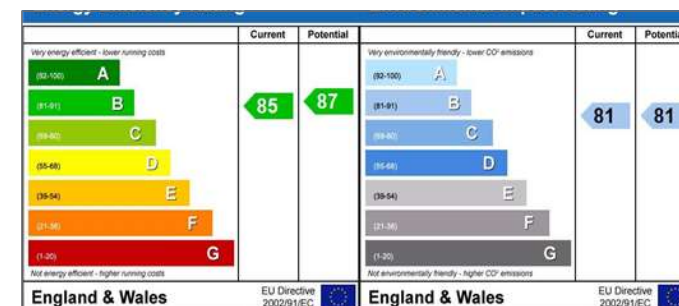
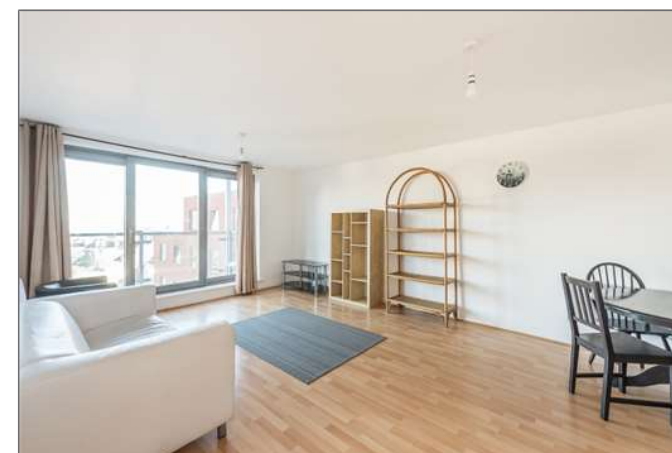


Description

Located in Watford within walking distance to the station this modern apartment is a must see! The property comes furnished and is available now. The main entrance takes you in to a hallway, through to a large open plan living area, with a modern fitted kitchen, dining area and living area with patio doors leading out to the balcony. There are two very good size double bedrooms, one with en-suite, a further spacious family bathroom and some storage cupboards. The property also has the benefit of gated allocated parking!

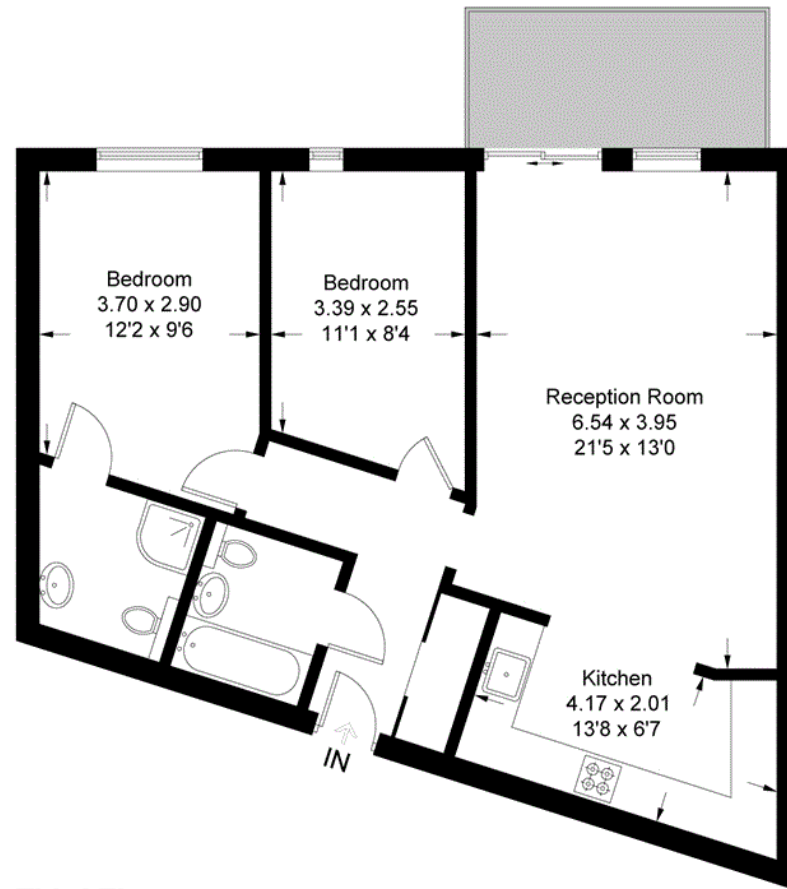
Situation

Watford is situated in the south of the county between the M25 and M1 motorways. Watford is only a 20 minutes train journey from Euston station. The River Gade runs along the west of Watford while the River Colne runs along the east. Shopping is dominated by the Intu Centre in the heart of the town, with major names including John Lewis and Marks and Spencer. For recreation, Cassiobury Park in the West of Watford provides enjoyable walks and also has a golf course. Watford has a great selection of quality secondary and primary schools. A very popular choice is Permits Secondary School and Watford Boys and Girls Grammar School.



Ashleigh Court

Approximate Gross Internal Area
73.2 sq m / 788 sq ft



Third Floor

This plan is for layout guidance only. Not drawn to scale unless stated. Windows and door openings are approximate. Whilst every care is taken in the preparation of this plan, please check all dimensions, shapes and compass bearings before making any decisions reliant upon them. (ID397494)

For clarification, we wish to inform prospective tenants that we have prepared these particulars as a general guide. We have not verified permissions, nor carried out a survey, tested the services, appliances and specific fittings. Room sizes are approximate and rounded: they are taken between internal wall surfaces and therefore include cupboards/shelves, etc. Accordingly, they should not be relied upon for carpets and furnishings. It should also be noted that all fixtures and fittings, carpeted, curtains/blinds, kitchen equipment and garden statuary, whether fitted or not, are deemed removable by the landlord unless specifically itemised with these particulars.

