






SANDY LODGE ROAD RICKMANSWORTH WD3
£6,500 PER MONTH AVAILABLE NOW

Hamptons
THE HOME EXPERTS

{ THE PARTICULARS

Sandy Lodge Road Rickmansworth
WD3

£6,500 Per Month
Unfurnished

 5 Bedrooms
 4 Bathrooms
 3 Receptions

Features

- Detached chalet bungalow, - Beautifully presented throughout, - Modern fitted kitchen with appliances, - Stunning garden,
- Five bedrooms, - Four bathrooms, - Deposit equivalent to 5 weeks' rent, - Council tax band H

Council Tax

Council Tax Band H

Hamptons
2 Station Road
Rickmansworth, WD3 1QZ
01923 896444
rickmansworthlettings@hamptons.co.uk
www.hamptons.co.uk

{ A TRULY STUNNING DETACHED BUNGALOW IN EXCLUSIVE MOOR PARK

The Property

Located in the exclusive area of Moor Park, this impressive chalet bungalow is beautifully presented throughout. The accommodation comprises: Entrance hallway with w/c leading to a spacious sitting room, further reception room leading to a large modern kitchen/dining room with fitted appliances, separate utility area leading to the integral garage & store room, bedroom with fitted wardrobes and en-suite shower room and small bedroom with en-suite shower room. On the first floor the main bedroom includes fitted wardrobes and luxury en-suite bathroom, bedroom with storage and en-suite shower room and final bedroom. Outside to the rear is a large stunning mature garden with patio and lawn and to the front further gardens and driveway parking for multiple cars. Deposit equivalent to 5 weeks' rent. Council tax band H

Location

Moor Park is an exclusive area close to Northwood. Northwood is a residential settlement in the London Borough of Hillingdon, adjoining Ruislip Woods National Nature Reserve which contains Ruislip Lido and borders Hertfordshire. Northwood is home to the Northwood NATO Headquarters based in the grounds of Eastbury Park. The Metropolitan tube rail service connects from Northwood to Baker Street Station. The area offers a wide range of shops and restaurants, and for your supermarket shopping, Waitrose is located in the High Street. There are four private schools in the Northwood area.



Sandy Lodge Road, Rickmansworth, WD3

Approximate Area = 2344 sq ft / 217.7 sq m

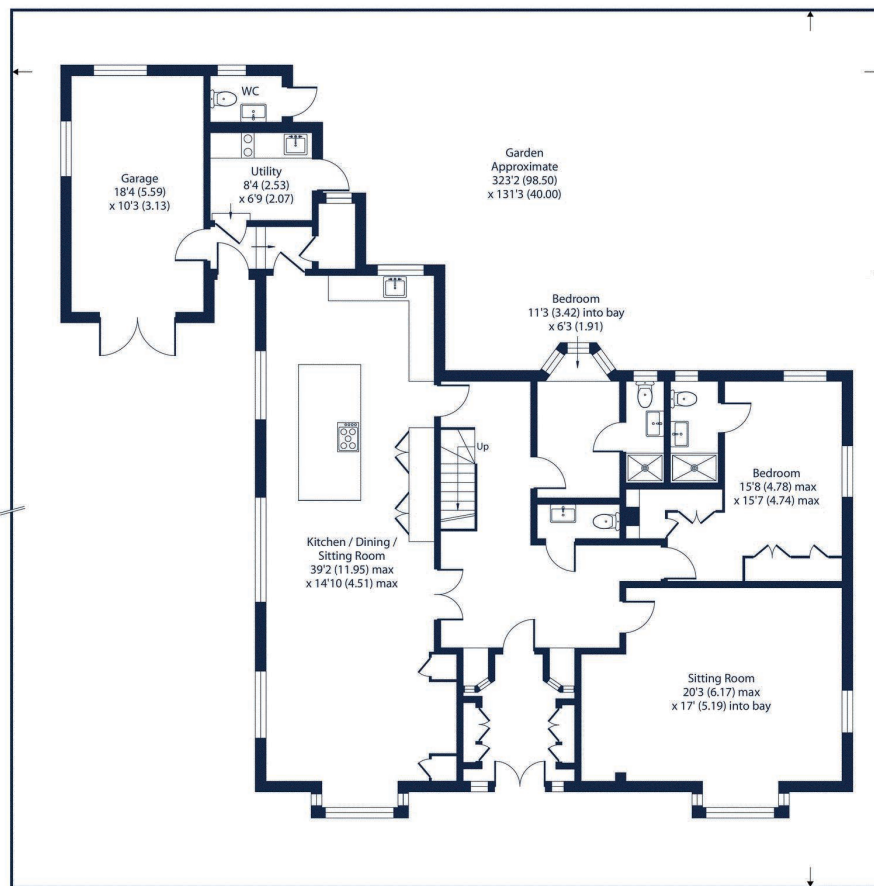
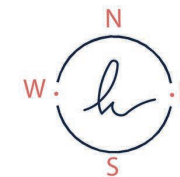
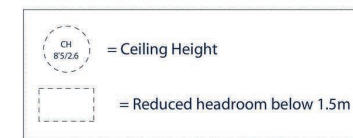
Limited Use Area(s) = 182 sq ft / 16.9 sq m

Garage = 188 sq ft / 17.4 sq m

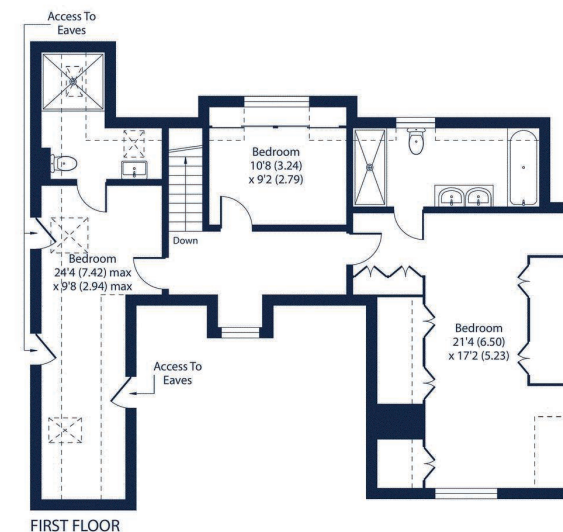
Outbuilding = 20 sq ft / 1.8 sq m

Total = 2734 sq ft / 253.8 sq m

For identification only - Not to scale



GROUND FLOOR



FIRST FLOOR



Floor plan produced in accordance with RICS Property Measurement 2nd Edition, Incorporating International Property Measurement Standards (IPMS2 Residential). © n:checom 2025. Produced for Hamptons. REF: 1287123

For Clarification

We wish to inform prospective tenants that we have prepared these particulars as a general guide and they have been confirmed as accurate by the landlord. We have not verified permissions, nor carried out a survey, tested the services, appliances and specific fittings. Room sizes are approximate and measurement figures rounded: they are taken between internal wall surfaces and therefore include cupboards/shelves, etc. Accordingly, they should not be relied upon for

carpets and furnishings. It should also be noted that all fixtures and fittings, carpeted, curtains/blinds, kitchen equipment and garden statuary, whether fitted or not, are deemed removable by the landlord unless specifically itemised with these particulars. Please enquire in office or on our website for details on holding deposit and tenancy deposit figures.

