



Cobblers Cottage Nantithet
Cury, TR12 7RB
Price guide £650,000

CHRISTOPHERS
ESTATE AGENTS

A quite gorgeous, four bedroom detached cottage of immense character and charm situated in the rural hamlet of Nantithet near Cury on the stunning Lizard Peninsula. Cobblers Cottage is sure to delight prospective purchasers with its quality and charm being set amidst stunning, mature extensive gardens and grounds of circa 0.4 of an acre. The property is double glazed and is warmed by oil fired central heating.

The accommodation, in brief, provides an entrance porch, entrance hallway, snug with open fire, lounge with large bay window, beautifully appointed kitchen/breakfast room, generous conservatory with vistas out over the garden, utility area and ground floor cloakroom. On the first floor there are four bedrooms, two of which enjoy their own en suites, with the third and fourth bedrooms being cleverly designed with a Jack and Jill arrangement to the family shower room.

Cury itself is a rural hamlet set on the beautiful Lizard Peninsula which has been designated as an area of outstanding natural beauty. Nantithet being a hamlet on the fringes of the village; a lovely location of a few individual properties. The property is situated approximately two miles from Poldhu Beach and Cafe and Mullion 18 hole links golf course. The majestic sailing waters of the Helford river are also a short drive away.

The large village of Mullion is approximately three miles away, it is a bustling village offering a good range of facilities including shops, Co-operative supermarket, well regarded primary and comprehensive schools and a nursery. The village is home to an attractive harbour, a beach at Polurrian Cove, health centre and pharmacy. The Polurrian Hotel has a leisure club with indoor swimming pool and the newly refurbished Mullion Cove Hotel also has spa facilities. There are many clubs and societies, including both cricket and football clubs and surf lifesaving club.

The market town of Helston is also a short drive away with extensive amenities including national stores and supermarkets.

THE ACCOMMODATION COMPRISES (DIMENSIONS APPROX)

Part glazed door to

ENTRANCE PORCH

A triple aspect room with some exposed stone to the wall and a window back to the snug. With door to

ENTRANCE HALLWAY

A super entrance with beamed ceiling, turning staircase rising to the first floor, part wood panelling to the wall, under stairs storage cupboard, engineered wood flooring and glazed french doors lead to

SNUG

5.33m x 3.39m (17'5" x 11'1")

A pleasant room with beamed ceilings, two windows to the front aspect having wooden seat arrangements, impressive stone fireplace with slate hearth housing an open fire with a wood mantel over. Feature shelving to both sides of the fireplace and serving hatch back through to the kitchen. The room is lit by attractive wall lighting.

From the entrance hallway, doors lead to -

LOUNGE

5.2m x 4.36m max inc' large bay window (17'0" x 14'3" max inc' large bay window)

An impressive room with beamed ceilings and large triple aspect bay window to the side aspect. Part wood panelling to the walls, bespoke built-in bookcases with storage under whilst the room is lit by a mixture of wall and ceiling lights.

KITCHEN/BREAKFAST ROOM

7.29m x 3m (narrowing to 2.5m) (23'11" x 9'10" (narrowing to 8'2")

Comprising an attractive, pale blue, high gloss fitted kitchen with stone effect composite worktops incorporating a one and a half bowl sink unit with mixer tap and Bosch ceramic hob with stainless steel chimney hood over. There are a mixture of base and drawer units with wall units over and attractive tiled splashbacks. Built-in appliances include a Miele oven, a Bosch microwave and a slimline Neff dishwasher. The room has a beamed ceiling, engineered wood flooring, attractive pendant lighting and a window which overlooks the garden at the rear. To the other end of the room there is an impressive stone fireplace (not open) with slate hearth, beamed ceilings, engineered wood flooring and glazed french doors lead to the

CONSERVATORY

4.6m x 3.53m max measurements (15'1" x 11'6" max measurements)

A super triple aspect room with views over the garden, pendant lighting and feature wall mounted fire with concertina style door to the -

UTILITY AREA

With wood worktop incorporating a stainless steel sink drainer with mixer tap. There is a cupboard over, cupboard under and space is provided for a washing machine. Door to -

CLOAKROOM

With close coupled W.C. and tile effect vinyl flooring.

An attractive turning staircase rises from the hallway to the -

FIRST FLOOR LANDING

With loft hatch to the roof space and doors to -

BEDROOM ONE

4.2m x 3.36m (13'9" x 11'0")

A dual aspect room with a built-in shelved cupboard and door to

EN SUITE SHOWER ROOM

With a walk-in glazed shower cubicle with tiled splash back, close coupled W.C., sink set into a vanity unit, heated towel rail, window to the rear aspect and a built-in storage cupboard.

BEDROOM TWO

3.5m x 2.7m (11'5" x 8'10")

With built-in wardrobe and drawer unit, further overhead storage and a window to the front aspect overlooking the garden.

BEDROOM THREE

With beamed ceiling, built-in wardrobe, further overhead storage and a window to the rear aspect overlooking the garden. With door to -

SHOWER ROOM

This room has been designed with Jack & Jill doors (a door from bedroom 3 and a second door onto the landing). A nicely appointed shower room with glazed walk-in cubicle with tiled splashback, close coupled W.C., wash hand basin set into a vanity unit, window to the rear aspect, heated towel rail and tile effect flooring.

BEDROOM FOUR

3.5m x 3.55m (11'5" x 11'7")

A pleasant room with canopied ceiling, window to the front aspect and a window seat arrangement. With door to -

EN SUITE BATHROOM

With well appointed suite which includes a 'P' shaped panelled bath with tiled splashback and mirror over, a shelf mounted hand basin with storage under and a lit mirror over and a concealed cistern W.C., There is a beamed ceiling, tiling to the walls, a storage cupboard with slatted drying shelves, heated towel rail and a window to the rear aspect.

OUTSIDE

There are two large gates to the front of the property leading to an extensive gravelled turning area with parking for several vehicles. This area is surrounded by mature specimen trees.

GARAGE/WORKSHOP

Wood built with power and light.

GARDEN & GROUNDS

As one enters through wrought iron gates you will have the pleasure of these very special gardens which run predominantly to the rear of the property. There is a further gravelled courtyard area bordered by mature plants, trees and shrubs, offering good degrees of privacy with an abundance of specimen plants with steps leading down to the summer house, which is bordered by a meandering stream. On leaving this area, through a wooden arch, a pathway leads over a lawn to a special place ,bordered by the stream with an abundance of mature planting, leading on to a wild flower meadow with fruit trees.

SHEPHERD'S HUT

At the end of this part of the garden, the current owners have erected a shepherd's hut with a decked area which has a lovely westerly outlook to enjoy evenings surrounded by wildlife.

SERVICES

Mains water and electricity. Private drainage. Oil fired central heating.

COUNCIL TAX

Council Tax Band E.

ANTI-MONEY LAUNDERING

We are required by law to ask all purchasers for verified ID prior to instructing a sale

PROOF OF FINANCE - PURCHASERS

Prior to agreeing a sale, we will require proof of financial ability to purchase which will include an agreement in principle for a mortgage and/or proof of cash funds.

DATE DETAILS PREPARED

20th June, 2023.

Directions

From Helston, take the road to The Lizard. At the end of the Culdrose airfield proceed straight across the roundabout signposted The Lizard. Take the first turning right signposted Mullion Cove and Mullion Golf Course. Follow the road for a few miles going down the hill at Nantithet and over the ford and the property will be found on the right hand side and is identifiable by our For Sale board.

Viewings

To view this property or any other we are offering for sale simply call the office on 01326 565566.

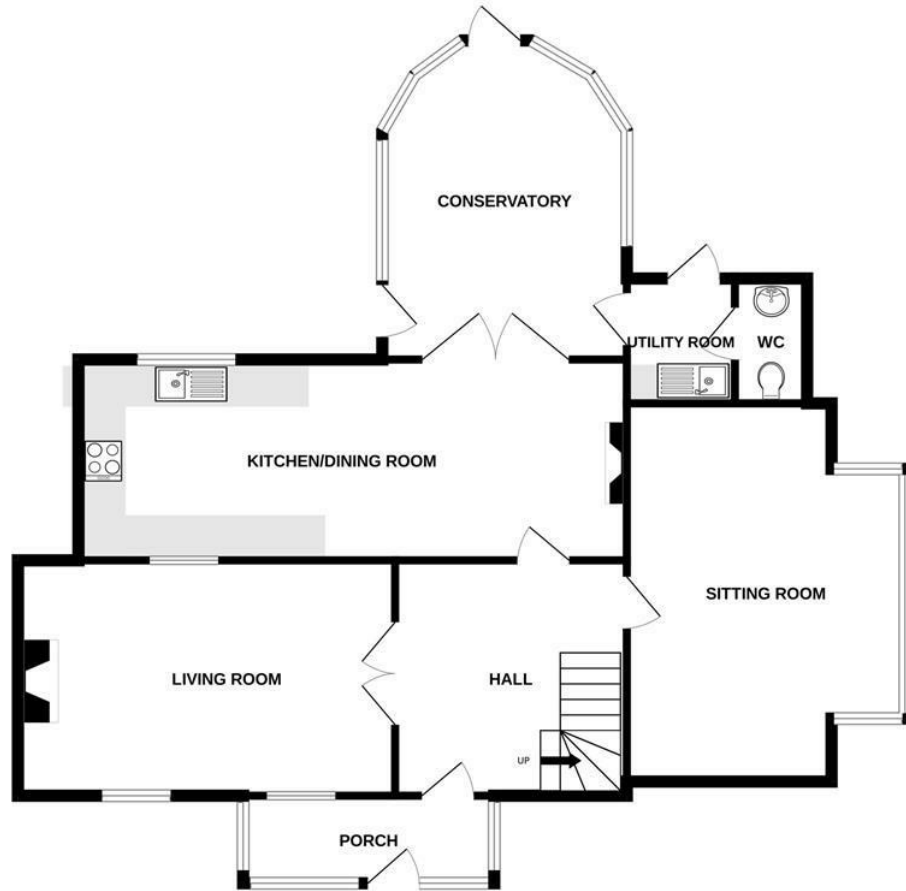


Cobblers Cottage Nantithet, Cury, TR12 7RB

Price guide £650,000

IMPORTANT AGENTS NOTES: Christophers Estate Agents for themselves and the vendors or lessors of this property confirm that these particulars are set out as a general guide only and do not form part of any offer or contract. Fixtures, fittings, appliances and services have not been tested by ourselves and no person in the employment of Christophers Estate Agents has any authority to give or make representation or warranty whatsoever in relation to the property. All descriptions, dimensions distances and orientation are approximate; they are not suitable for purposes that require precise measurement. Nothing in these particulars shall be taken as implying that any necessary building regulations, planning or other consents have been obtained. The photographs show only certain parts and aspects of the property which may have changed since they were taken. It should not be assumed that the property remains exactly the same. Intending purchasers should satisfy themselves by personal inspection or otherwise to the correctness of each of the statements, which are given in good faith but not to be relied upon as statements of fact. If double glazing is mentioned in these details purchasers must satisfy themselves as to the amount of double glazed units in the property.

GROUND FLOOR



1ST FLOOR



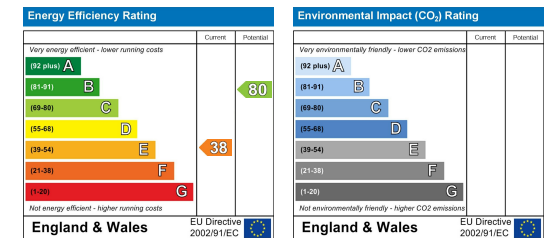
Whilst every attempt has been made to ensure the accuracy of the floorplan contained here, measurements of doors, windows, rooms and any other items are approximate and no responsibility is taken for any error, omission or mis-statement. This plan is for illustrative purposes only and should be used as such by any prospective purchaser. The services, systems and appliances shown have not been tested and no guarantee as to their operability or efficiency can be given.
Made with Metropix ©2023



OFFICES AT

Helston 5 Wendron Street, Helston TR13 8PT - E: property@christophers.uk.com - T: 01326 565566

Porthleven Fore Street, Porthleven, Helston TR13 9HJ - E: porthleven@christophers.uk.com - T: 01326 573737



5 Wendron Street, Helston, TR13 8PT
property@christophers.uk.com
 01326 565566
www.christophers.uk.com

CHRISTOPHERS
 ESTATE AGENTS

