



Hepworth Road, Abbey Meads, SN25 4YL

Asking Price £280,000

- New to the Market
- Kitchen/Diner
- Generous Garden
- No Onward Chain
- End-Terrace Home
- Three Bedrooms
- Garage & Driveway Parking
- Spacious Living Room
- Bathroom Suite
- Sought After Location

Ridgeway are pleased to bring to your attention a new listing that has just become available. This three-bedroom, end-terrace house is located in a sought-after area in Abbey Meads, Swindon. The property features: Entrance Hallway, Spacious Living Room, Kitchen/Diner, Three Bedrooms, Bathroom Suite, Driveway Parking, Garage and Enclosed Garden.

It's conveniently located near local amenities, with straightforward access to the A419, M4, and M5. Plus, there's no onward chain, which simplifies the purchase process.

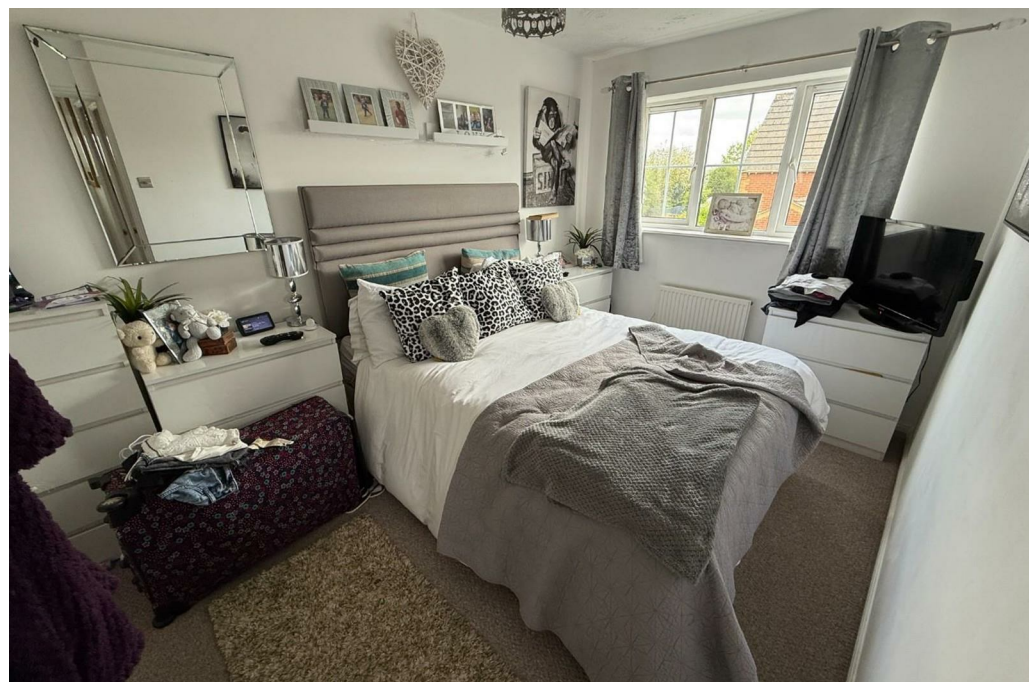
EPC Rating - C

Council Tax Band - D

Heating Type - Gas Central Heating

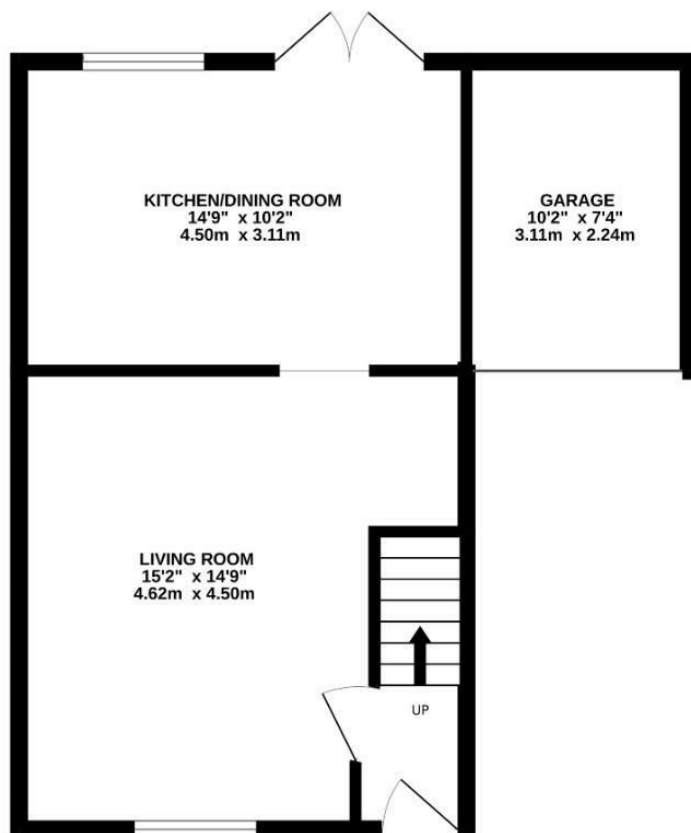
Freehold

(Note; Please note that the photos used on the advert are not a true representative of the property as this property currently has a tenant in situ).

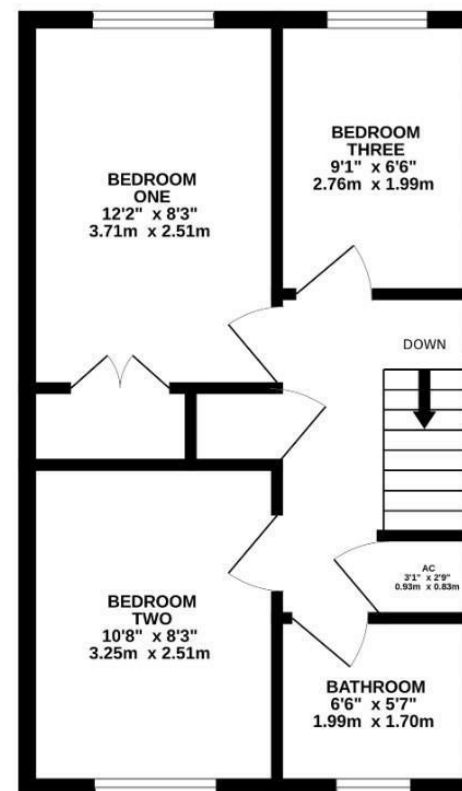




GROUND FLOOR
449 sq.ft. (41.7 sq.m.) approx.



1ST FLOOR
375 sq.ft. (34.8 sq.m.) approx.



TOTAL FLOOR AREA : 824 sq.ft. (76.5 sq.m.) approx.

Whilst every attempt has been made to ensure the accuracy of the floorplan contained here, measurements of doors, windows, rooms and any other items are approximate and no responsibility is taken for any error, omission or mis-statement. This plan is for illustrative purposes only and should be used as such by any prospective purchaser. The services, systems and appliances shown have not been tested and no guarantee as to their operability or efficiency can be given.
Made with Metropix ©2025