



Fontmell Close, Redhouse, SN25 2PE

Asking Price £197,500

- New to the Market
- Modern Fully Fitted Kitchen with Integral Appliances
- Garage with Internal Utility Cupboard
- No Onward Chain
- Two Double Bedroom Coach House
- Two Double Bedrooms
- Driveway Parking
- Spacious Living Room/Dining Area
- Bathroom Suite
- Rear Courtyard Garden Area

We at Ridgeway Estate Agents are delighted to introduce this charming and well-maintained two-bedroom coach house, perfectly positioned in a peaceful cul-de-sac within the sought-after Redhouse area of Swindon. This lovely property boasts a private entrance with a staircase leading to the first floor. Once inside, you'll find a generously sized living area, a contemporary fully fitted kitchen complete with integrated appliances, and two comfortable double bedrooms. The bathroom is also finished to a high standard.

Furthermore, the property benefits from driveway parking, a garage that includes internal utility space, and a secluded courtyard garden to the rear. This wonderful home is also offered with the added convenience of No Onward Chain.

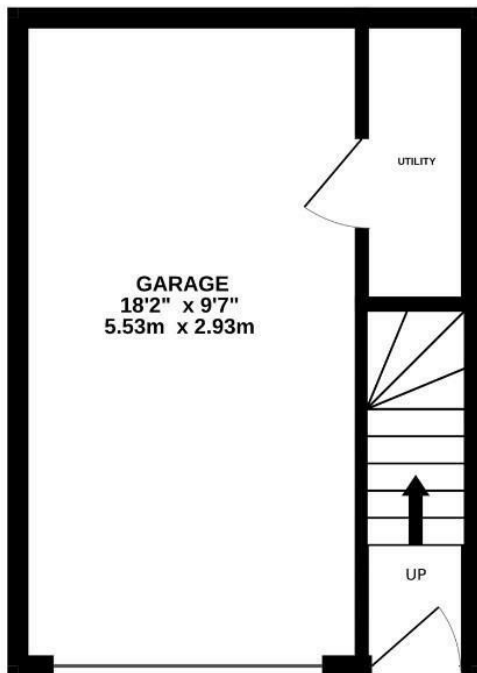
EPC Rating - C
Council Tax Band - B
Heating Type- Gas Central Heating
Leasehold

979 Years Remaining
Approx £633.00 Service Charge Per Year (January-December 2025)
£384.00 Annual Ground Rent Charge

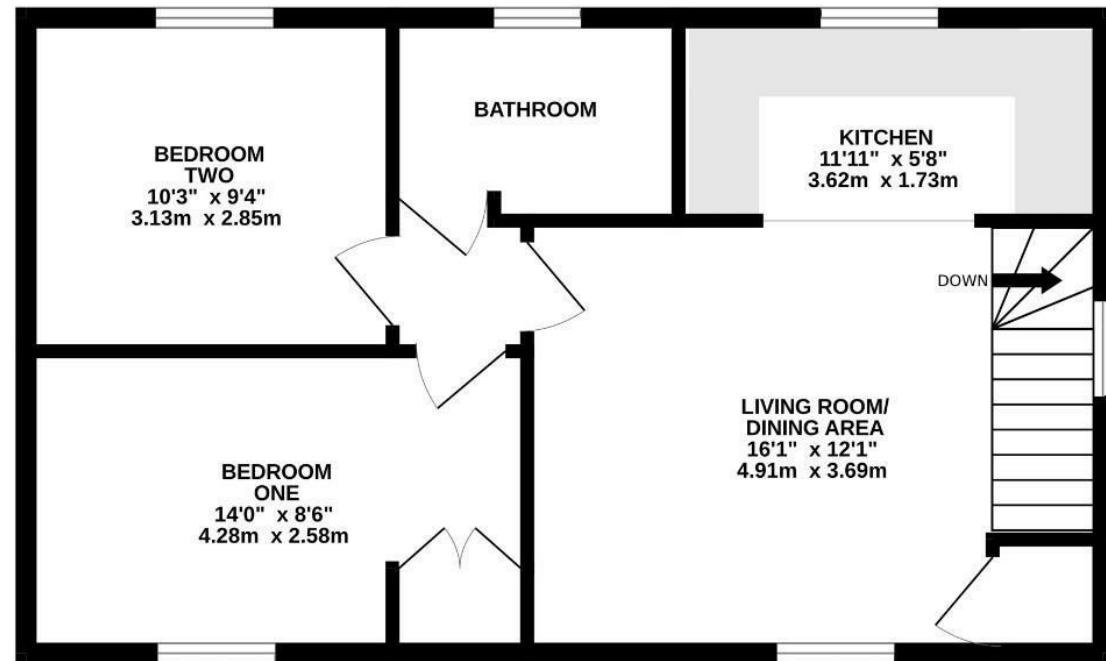




GROUND FLOOR
230 sq.ft. (21.4 sq.m.) approx.



1ST FLOOR
536 sq.ft. (49.8 sq.m.) approx.



TOTAL FLOOR AREA : 767 sq.ft. (71.2 sq.m.) approx.

Whilst every attempt has been made to ensure the accuracy of the floorplan contained here, measurements of doors, windows, rooms and any other items are approximate and no responsibility is taken for any error, omission or mis-statement. This plan is for illustrative purposes only and should be used as such by any prospective purchaser. The services, systems and appliances shown have not been tested and no guarantee as to their operability or efficiency can be given.
Made with Metropix ©2025