



Camden Close, Grange Park, SN5 6BU

Asking Price £225,000

- New to the Market with No Onward Chain
- Living Room/Diner
- Bathroom Suite
- Ideal Investment or First Time Home
- Large Plot
- Fitted Kitchen
- Driveway Parking
- Two Bedroom House
- Two Double Bedrooms
- Fantastic Garden

Ridgeway are pleased to bring to your attention a new listing that has just become available. This larger than average two-bedroom, house is located in a sought-after area within Grange Park, Swindon. The property features: Entrance, Living Room/Diner, Fitted Kitchen, Two Double Bedrooms, Bathroom Suite, Driveway Parking and a Fantastic Garden. Offered with No Onward Chain.

EPC Rating - C

Council Tax Band - B

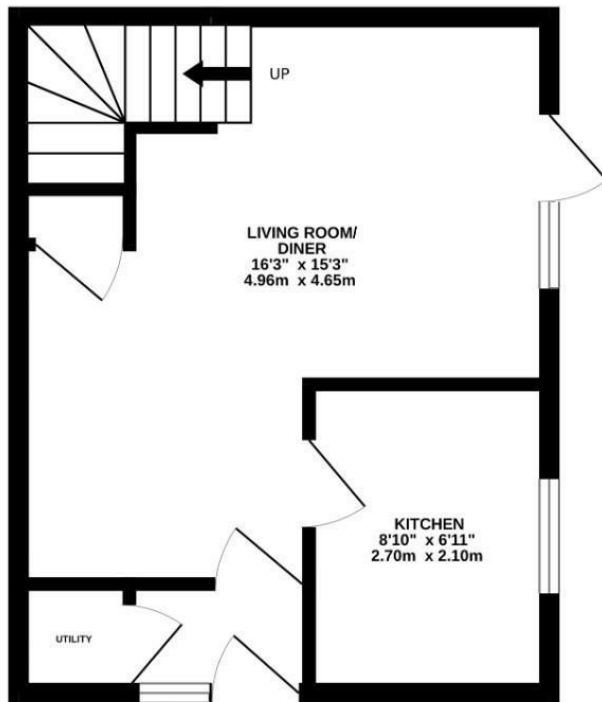
Heating Type - Gas Central Heating

Freehold

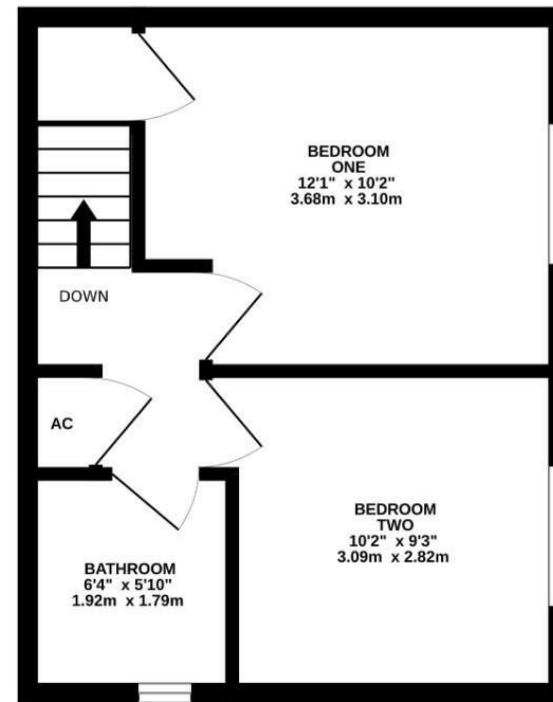




GROUND FLOOR
296 sq.ft. (27.5 sq.m.) approx.



1ST FLOOR
296 sq.ft. (27.5 sq.m.) approx.



TOTAL FLOOR AREA : 592 sq.ft. (55.0 sq.m.) approx.

Whilst every attempt has been made to ensure the accuracy of the floorplan contained here, measurements of doors, windows, rooms and any other items are approximate and no responsibility is taken for any error, omission or mis-statement. This plan is for illustrative purposes only and should be used as such by any prospective purchaser. The services, systems and appliances shown have not been tested and no guarantee as to their operability or efficiency can be given.
Made with Metropix ©2025