



Burdett Street, Ramsbury, SN8 2QX

Asking Price £675,000

- New to the Market with No Onward Chain
- Spacious Living Room
- Family Bathroom Suite
- Integral Garage & Driveway Parking
- Entrance Hallway with Cloakroom
- Kitchen/Dining Room
- Large Conservatory
- Study/Fourth Bedroom
- Three Good-Sized Bedrooms with Ensuite to Master Bedroom
- Enclosed Garden with Views

We are excited to share a unique opportunity to own a well-positioned three/four-bedroom detached character property in the highly desirable village of Ramsbury. This charming home offers a rare chance to enjoy peaceful village life, complete with modern amenities and potential for further development. The property features an entrance hallway with cloakroom, separate study/fourth bedroom, a light and airy living room, kitchen/dining room, three good-sized bedrooms, including a master ensuite, separate family bathroom and large conservatory.

The outdoor space includes an enclosed, two-level garden with stunning, far-reaching views, as well as an integral garage and driveway parking.

This property is being sold with no onward chain, which simplifies the purchase process.

EPC Rating - C

Council Tax Band - F

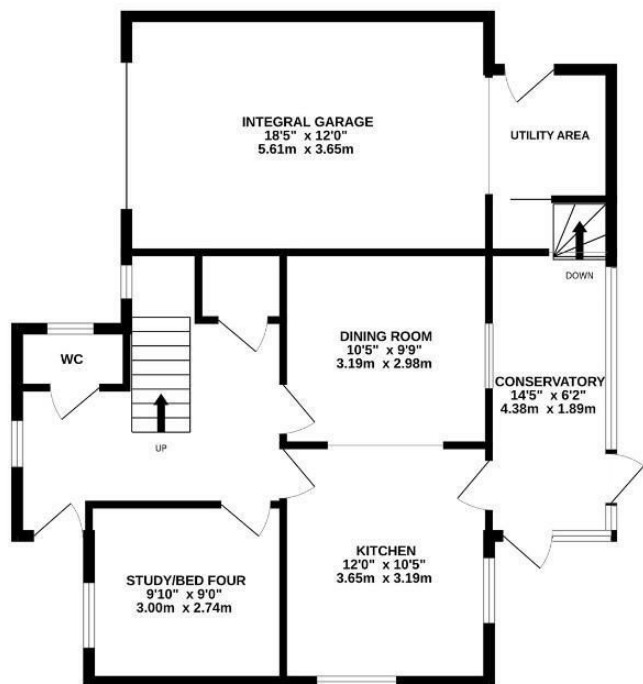
Heating Type - Gas Central Heating

Freehold





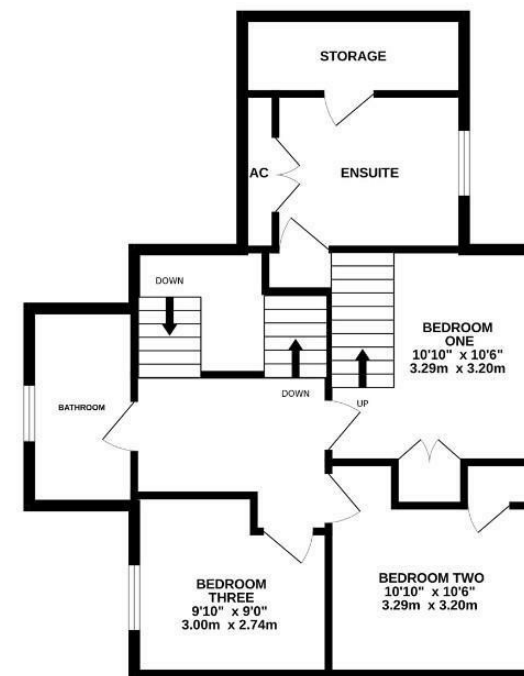
GROUND FLOOR
840 sq.ft. (78.0 sq.m.) approx.



1ST FLOOR
299 sq.ft. (27.8 sq.m.) approx.



2ND FLOOR
625 sq.ft. (58.0 sq.m.) approx.



TOTAL FLOOR AREA : 1764 sq.ft. (163.9 sq.m.) approx.

Whilst every attempt has been made to ensure the accuracy of the floorplan contained here, measurements of doors, windows, rooms and any other items are approximate and no responsibility is taken for any error, omission or mis-statement. This plan is for illustrative purposes only and should be used as such by any prospective purchaser. The services, systems and appliances shown have not been tested and no guarantee as to their operability or efficiency can be given.

Made with Metropix ©2025