



Lawrence Close, Eldene, SN3 3SY

Asking Price £230,000

- New to the Market
- Spacious Living Room / Diner
- Enclosed Garden with Side Access
- No Onward Chain
- Three Bedroom Semi-Detached Family Home
- Fitted Kitchen
- Garage & Driveway Parking
- Cloakroom & Study
- Bathroom Suite
- General Refurbishment Required Throughout

Ridgeway are pleased to bring to your attention a new listing that has just become available. This three-bedroom, semi-detached house is located in a sought-after, quiet cul-de-sac in Eldene, Swindon, and presents an excellent opportunity for refurbishment. The property features: Entrance Hallway, WC, Study Room, Spacious Living Room/Diner, Fitted Kitchen, Three Bedrooms, Bathroom Suite, Driveway Parking, Garage and Enclosed Garden. Offered with No Onward Chain, this property is ready for its next owner to bring their vision to life.

EPC Rating - D

Council Tax Band - C

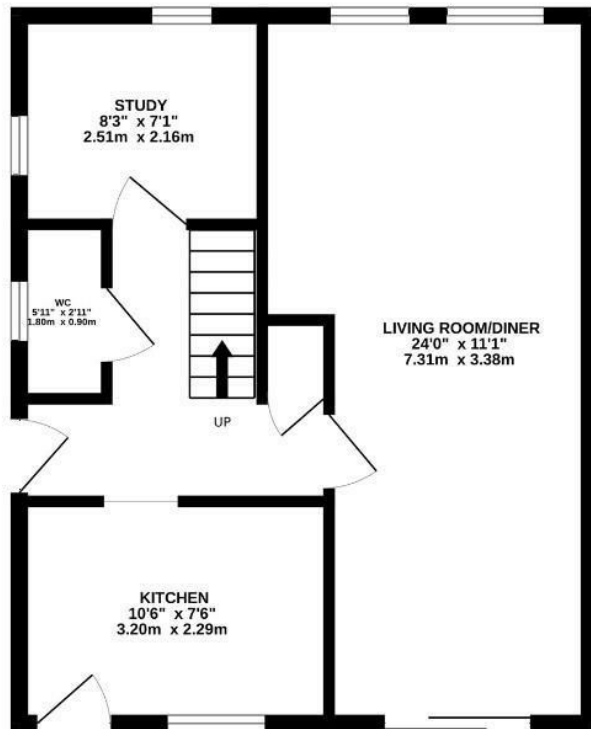
Heating Type - Gas Central Heating

Freehold

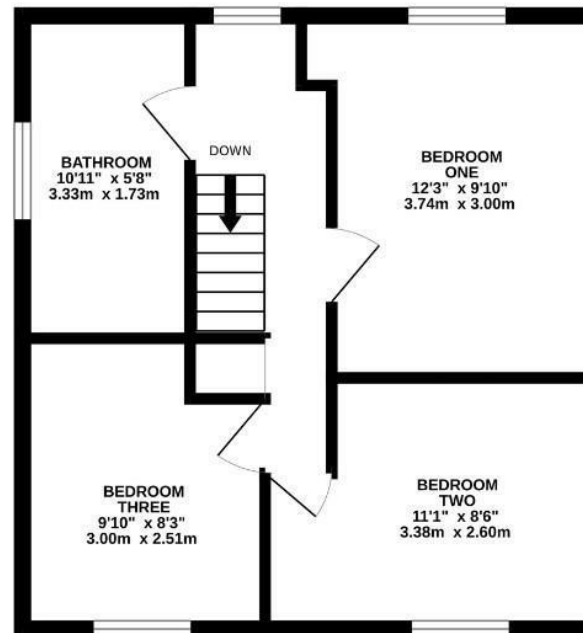




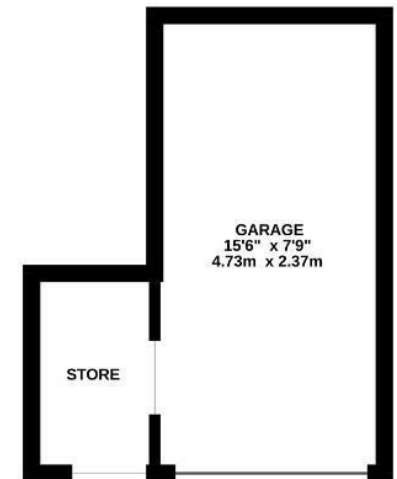
GROUND FLOOR
463 sq.ft. (43.0 sq.m.) approx.



1ST FLOOR
401 sq.ft. (37.3 sq.m.) approx.



2ND FLOOR
149 sq.ft. (13.8 sq.m.) approx.



TOTAL FLOOR AREA : 1013 sq.ft. (94.2 sq.m.) approx.

Whilst every attempt has been made to ensure the accuracy of the floorplan contained here, measurements of doors, windows, rooms and any other items are approximate and no responsibility is taken for any error, omission or mis-statement. This plan is for illustrative purposes only and should be used as such by any prospective purchaser. The services, systems and appliances shown have not been tested and no guarantee as to their operability or efficiency can be given.

Made with Metropix ©2025