



Gilman Close, St. Andrews Ridge, SN25 4GJ

Asking Price £350,000

- New to the Market with No Onward Chain
- Separate Dining Room
- Ensuite to Master Bedroom
- Garage & Driveway Parking
- Entrance Hallway with Cloakroom
- Fully Fitted Kitchen
- Family Bathroom Suite
- Spacious Living Room
- Three Bedrooms
- Enclosed Rear Garden

Ridgeway are excited to share a fantastic opportunity in St. Andrews Ridge: a beautifully situated three-bedroom detached family home. This property boasts: entrance hallway, cloakroom, spacious living room in addition to a separate dining room, fully fitted kitchen, three bedrooms, including a master with an ensuite and a separate family bathroom. Externally offering a enclosed rear garden, along with a garage and driveway

It's conveniently located near local amenities, with straightforward access to the A419, M4, and M5. Plus, there's no onward chain, which simplifies the purchase process.

EPC Rating - D

Council Tax Band - E

Heating Type - Gas Central Heating

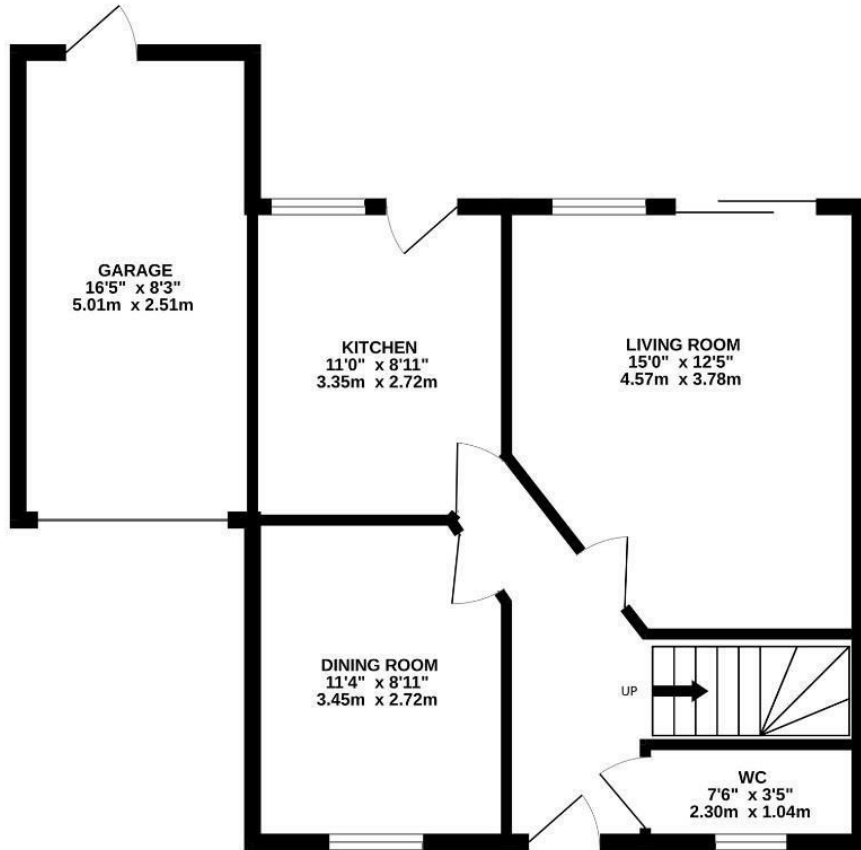
Freehold

(Note; Please note that the photos used on the advert are not a true representative of the property as this property currently has a tenant in situ).

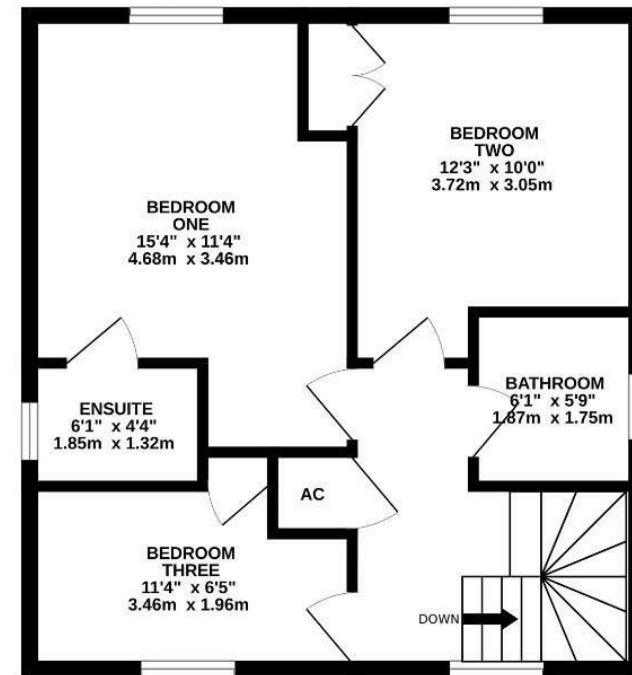




GROUND FLOOR
611 sq.ft. (56.8 sq.m.) approx.



1ST FLOOR
490 sq.ft. (45.5 sq.m.) approx.



TOTAL FLOOR AREA : 1101 sq.ft. (102.3 sq.m.) approx.

Whilst every attempt has been made to ensure the accuracy of the floorplan contained here, measurements of doors, windows, rooms and any other items are approximate and no responsibility is taken for any error, omission or mis-statement. This plan is for illustrative purposes only and should be used as such by any prospective purchaser. The services, systems and appliances shown have not been tested and no guarantee as to their operability or efficiency can be given.
Made with Metropix ©2025