



Vistula Crescent, Haydon End, SN25 1QG

Asking Price £330,000

- New to the Market
- Spacious Living Area with Double Doors to Rear Garden
- First Floor Bathroom Suite
- Garage and Driveway Parking for Two Cars
- Modern Three Bedroom Family Home
- Kitchen with Bay-Fronted Windows
- Second Floor Master Bedroom with Ensuite
- Ground Floor W.C
- Two First Floor Bedrooms
- Maintenance Free Rear Garden

13 Commercial Road, Swindon, Wiltshire, SN1 5NF
01793 530167

swindon@ridgewayestateagents.co.uk
<https://www.ridgewayestateagents.co.uk/>

We are delighted to offer the market this beautifully presented Three Bedroom Semi-Detached Family Home that benefits from being situated within the much desirable area of Haydon End, Swindon. The accommodation comprises of; Entrance Hallway, W.C, Fitted Kitchen with Bay-Fronted Windows, Spacious Living Area with Double Doors to Rear Garden, Three Good-Sized Bedrooms with Ensuite Shower Room to Master Bedroom and Family Bathroom Suite. This property further benefits a Private, Maintenance Free Rear Garden, Garage and Driveway Parking for Two Cars.

Council Tax Band- D

EPC Rating- TBC

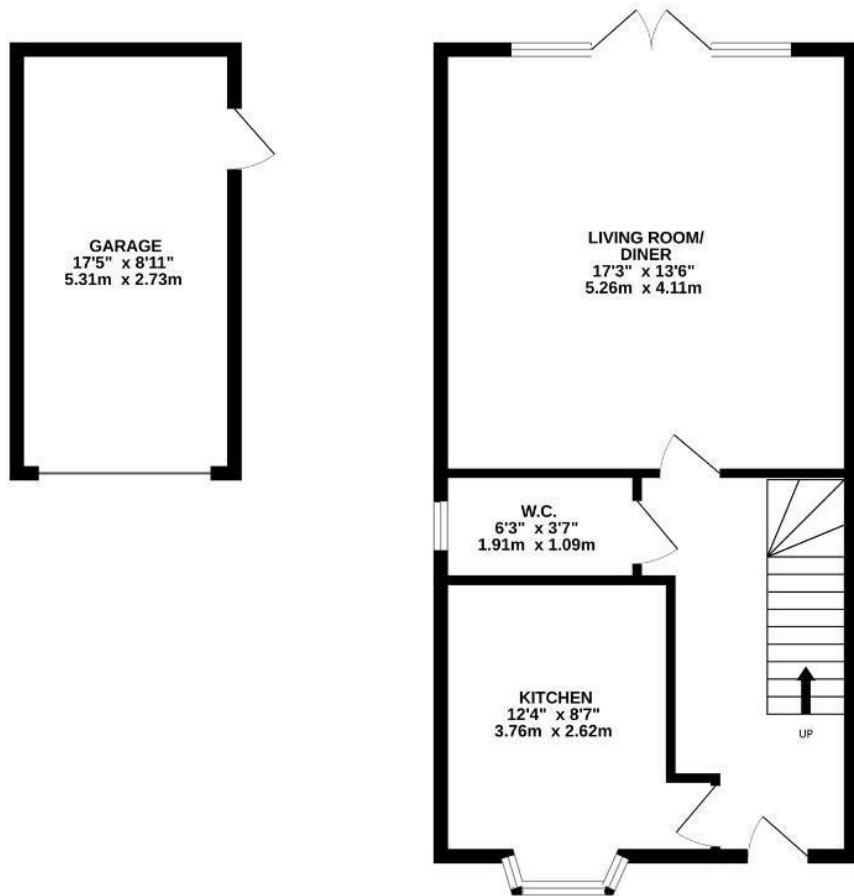
Heating Type- Gas Central Heating

Freehold

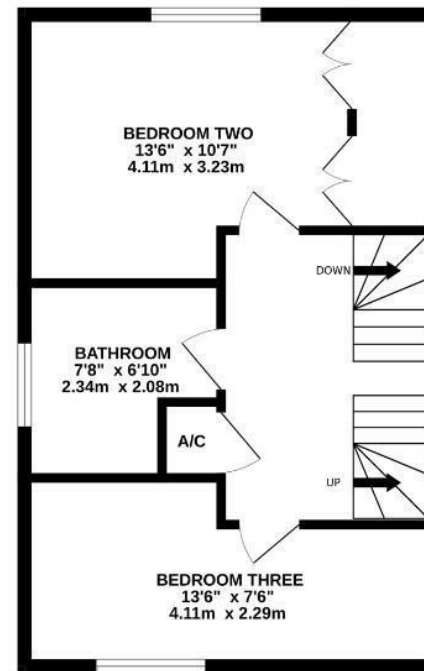




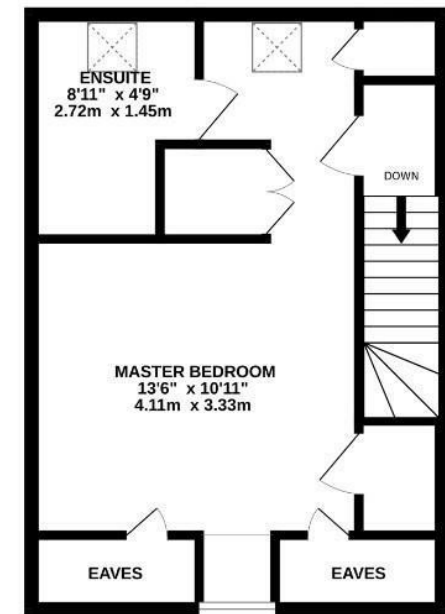
GROUND FLOOR



1ST FLOOR



2ND FLOOR



Whilst every attempt has been made to ensure the accuracy of the floorplan contained here, measurements of doors, windows, rooms and any other items are approximate and no responsibility is taken for any error, omission or mis-statement. This plan is for illustrative purposes only and should be used as such by any prospective purchaser. The services, systems and appliances shown have not been tested and no guarantee as to their operability or efficiency can be given.

Made with Metropix ©2025