



Sheridan Drive, Royal Wootton Bassett, SN4 8JJ

Asking Price £279,950

- New to the Market
- Spacious Living Room
- Study/Bedroom Four
- No Onward Chain
- Three/Four Bedroom Semi-Detached Family Home
- Separate Dining Room
- West Established Rear Garden
- Cloakroom W.C.
- Conservatory
- Driveway Parking

Ridgeway are delighted to offer the market a well positioned Three/Four Bedroom Semi-Detached Family Home that benefits from being sold with No Onward Chain and is situated within the much popular area of Royal Wootton Bassett. The accommodation comprises of; Entrance Porch, W.C., Fitted Kitchen, Spacious Living Room, Separate Dining Room, Study/Bedroom Four, Three Bedrooms and Bathroom Suite. This property further benefits a Large Conservatory, Well Established Rear Garden, Driveway Parking and Gas Central Heating. No Onward Chain.

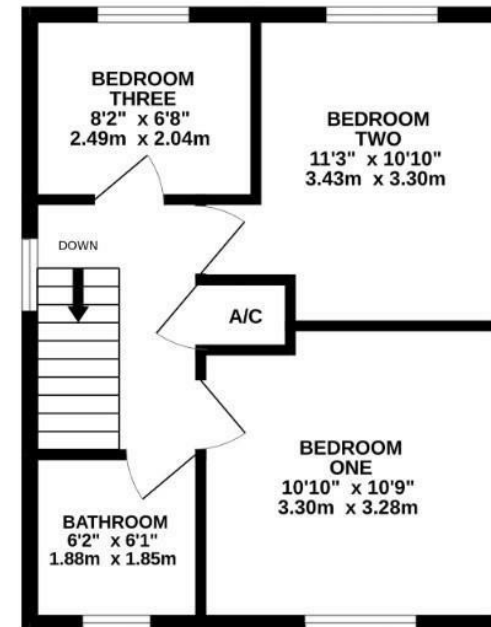
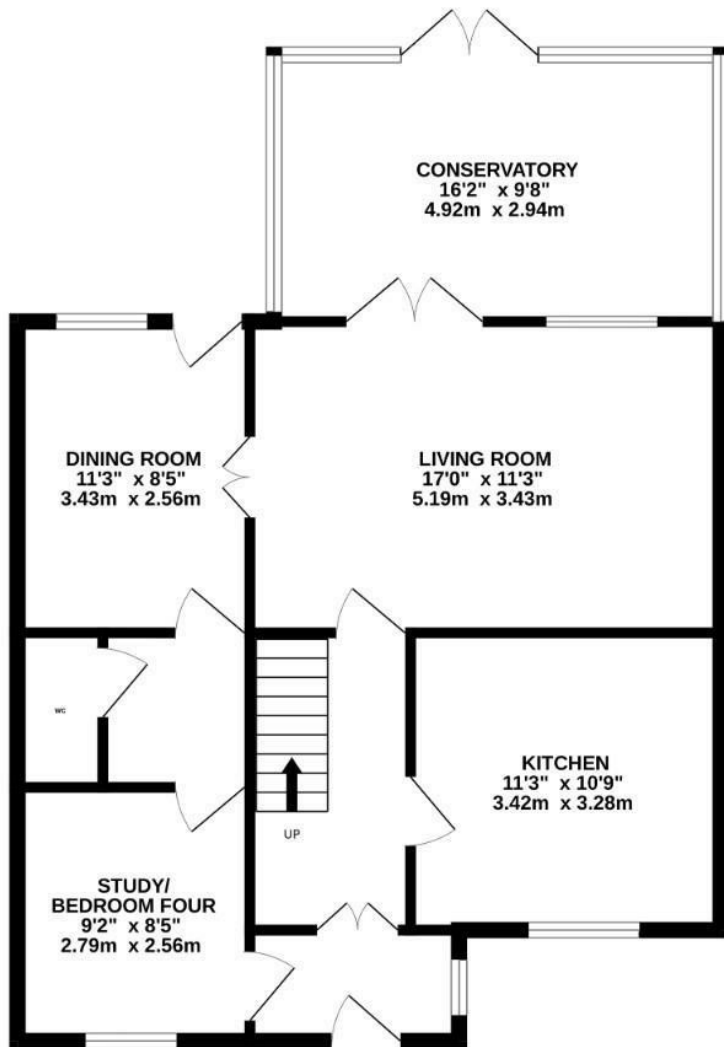
Epc Rating- D

Council Tax Band- C

Freehold







TOTAL FLOOR AREA : 1154 sq.ft. (107.2 sq.m.) approx.

Whilst every attempt has been made to ensure the accuracy of the floorplan contained here, measurements of doors, windows, rooms and any other items are approximate and no responsibility is taken for any error, omission or mis-statement. This plan is for illustrative purposes only and should be used as such by any prospective purchaser. The services, systems and appliances shown have not been tested and no guarantee as to their operability or efficiency can be given.

Made with Metropix ©2024