



Gamekeepers Close, Ashbrake, SN25 4ZQ

Asking Price £179,950

- New to the Market
- Fully Fitted Kitchen with White-Goods
- Garage & Driveway Parking
- No Onward Chain
- Freehold Coach House
- One Double Bedroom with Built-in Wardrobe
- Gas Central Heating
- Open Plan Living Room/Dining Area
- Bathroom Suite
- Ideal Investment or First Time Buy

Ridgeway are delighted to offer the market a beautifully positioned One Bedroom Coach House that benefits from being situated within the much sought after area of Ash Brake. This home also benefits from being Freehold and has No Onward Chain. The accommodation comprises of a: Private Entrance with Stairs Rising to First Floor, Open Plan Living Room/Dining Area, Fully Fitted Kitchen with White-Goods, Double Bedroom with Built-in Wardrobe and Bathroom Suite. This property further benefits a Good-Sized Garage with Storage, Driveway Parking and a New Worcester Combi-Boiler.

Council Tax Band- B

EPC Rating- C

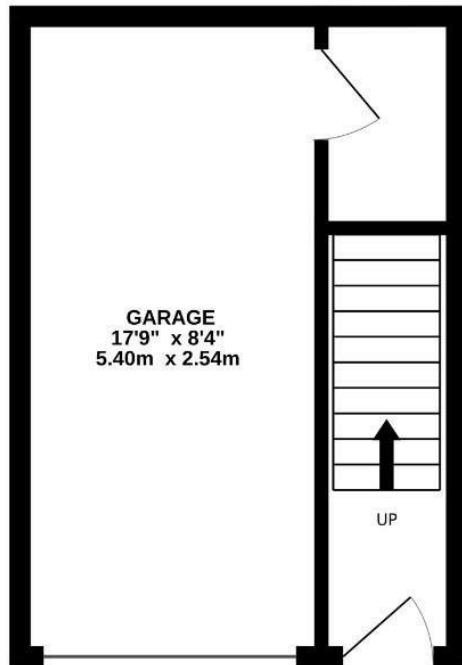
Heating Type- Gas Central Heating

Freehold

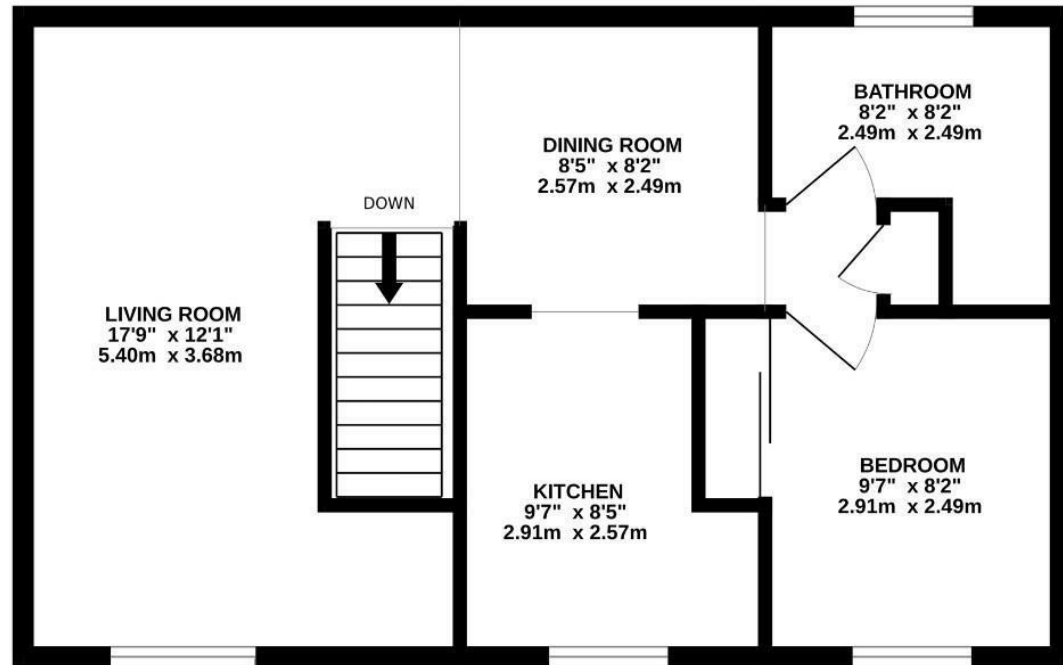




GROUND FLOOR
214 sq.ft. (19.9 sq.m.) approx.



1ST FLOOR
508 sq.ft. (47.2 sq.m.) approx.



TOTAL FLOOR AREA : 722 sq.ft. (67.1 sq.m.) approx.

Whilst every attempt has been made to ensure the accuracy of the floorplan contained here, measurements of doors, windows, rooms and any other items are approximate and no responsibility is taken for any error, omission or mis-statement. This plan is for illustrative purposes only and should be used as such by any prospective purchaser. The services, systems and appliances shown have not been tested and no guarantee as to their operability or efficiency can be given.
Made with Metropix ©2024