

Heronbridge Close, Westlea, SN5 7DR

Asking Price £110,000

- New to the Market
- Double Bedroom with Fitted Double Wardrobe
- Ideal First Time Buy
- No Onward Chain
- Top Floor Maisonette
- Bathroom Suite
- Fantastic Investment Opportunity
- Open Plan Living Room/Kitchen
- Allocated Parking for One Car
- Close to Local Amenities

Ridgeway are delighted to offer the market a well positioned One Bedroom Top Floor Maisonette that benefits from being sold with No Onward Chain and is situated within a quiet cul-de-sac in Westlea, Swindon. The accommodation comprises of; Private Entrance with Stairs Rising to First Floor, Spacious Open Plan Living Room/Kitchen, Double Bedroom and Bathroom Suite. The property further benefits Allocated Parking and would make an Ideal First Time Buy or Investment. No Onward Chain.

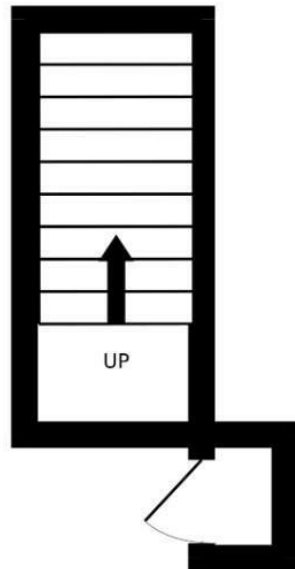
Epc Rating- C
Council Tax Band- A
Heating Type- Gas Central Heating
Leasehold

955 Years Remaining
Approx £660.00 Service Charge Per Year (12-Month Period)
Zero Ground Rent

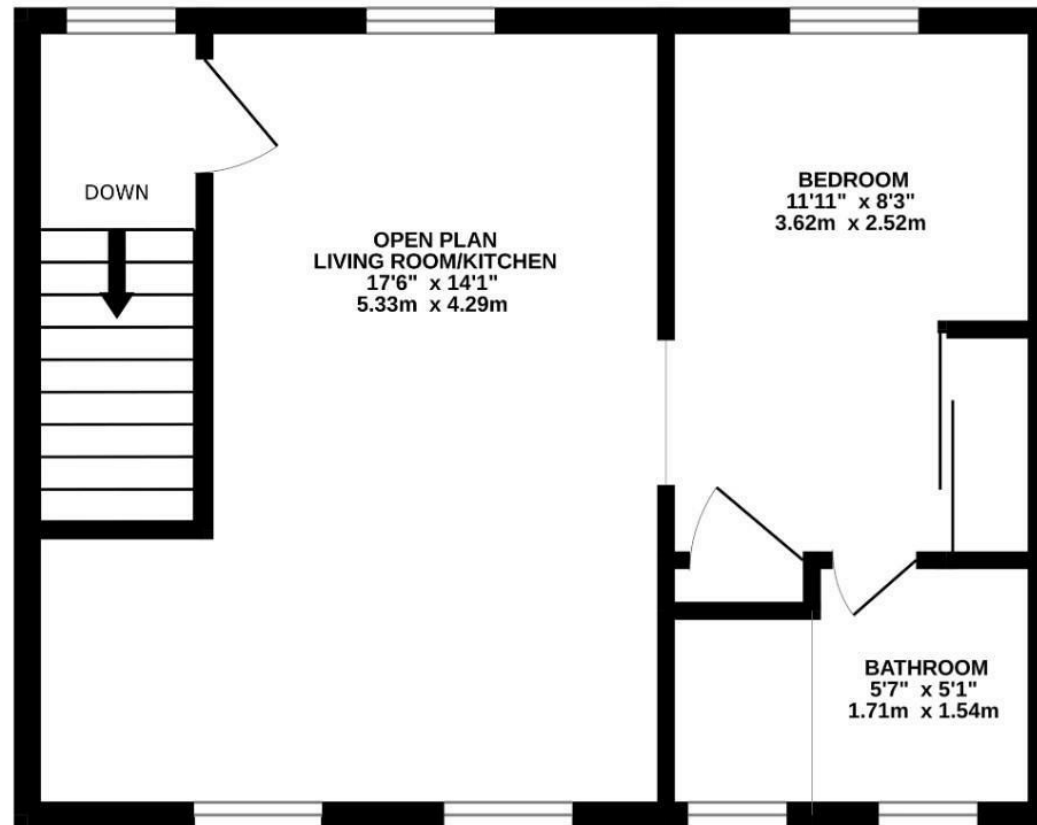




GROUND FLOOR
41 sq.ft. (3.8 sq.m.) approx.



1ST FLOOR
391 sq.ft. (36.3 sq.m.) approx.



TOTAL FLOOR AREA : 431 sq.ft. (40.1 sq.m.) approx.

Whilst every attempt has been made to ensure the accuracy of the floorplan contained here, measurements of doors, windows, rooms and any other items are approximate and no responsibility is taken for any error, omission or mis-statement. This plan is for illustrative purposes only and should be used as such by any prospective purchaser. The services, systems and appliances shown have not been tested and no guarantee as to their operability or efficiency can be given.

Made with Metropix ©2024