



Ground Floor Flat, Mount Road
Fleetwood, FY7 6EZ

- Victorian Converted Apartment
- Two Large Bedrooms
- Spacious Accommodation
- Stunning Communal Hallway

Asking Price Of £90,000

EPC Rating TBC





Property Description

FULL DESCRIPTION A fabulous Sea Front Property with outstanding views over the Bay. Set within a Victorian house this converted ground floor apartment comprises; Entrance Hall, lounge, fitted kitchen, two large bedrooms and bathroom.

COMMUNAL ENTRANCE Stunning entrance hallway with tiled floor, stained glass leaded window and door.

ENTRANCE HALL IN APARTMENT Built in cupboard.

LOUNGE 15' 5" x 14' 6" (4.7m x 4.42m) Two Sash windows to side. Electric storage heater. Polished floorboards. Decorative dado rail and coving.

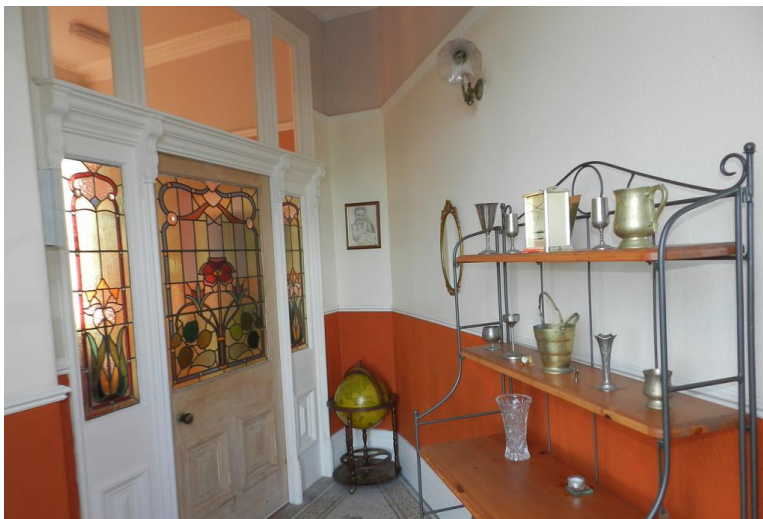
KITCHEN 14' 8" x 10' 1" (4.47m x 3.07m) Fitted wall and base units. Single bowl drainer sink unit. Built in double oven. Electric hob. Integrated fridge freezer. Tumble dryer, dishwasher and automatic washing machine. Feature built in wine rack. Storage heater.



BEDROOM ONE 22' 7" x 15' 7" (6.88m x 4.75m) Beautiful period fireplace with open fire. Coved ceiling, picture rail and ceiling rose.

BEDROOM TWO 20' 3" x 15' 8" (6.17m x 4.78m) Fitted wardrobes. Storage heater.

BATHROOM 11' 5" x 6' 1" (3.48m x 1.85m) Part tiled. Bath with shower over. Vanity unit wash hand basin. Low flush w.c.



33 Clifton Street
Blackpool
Lancashire
FY1 1JD

www.oystons.com
blackpool@oystons.com
01253 622225

Agents Note: Whilst every care has been taken to prepare these sales particulars, they are for guidance purposes only. All measurements are approximate are for general guidance purposes only and whilst every care has been taken to ensure their accuracy, they should not be relied upon and potential buyers are advised to recheck the measurements