



4 Bed  
House - Terraced  
located in Crookes

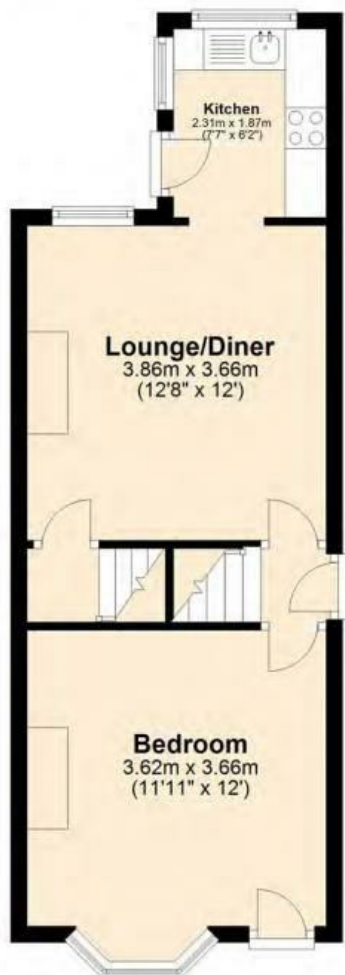
£395 PCM





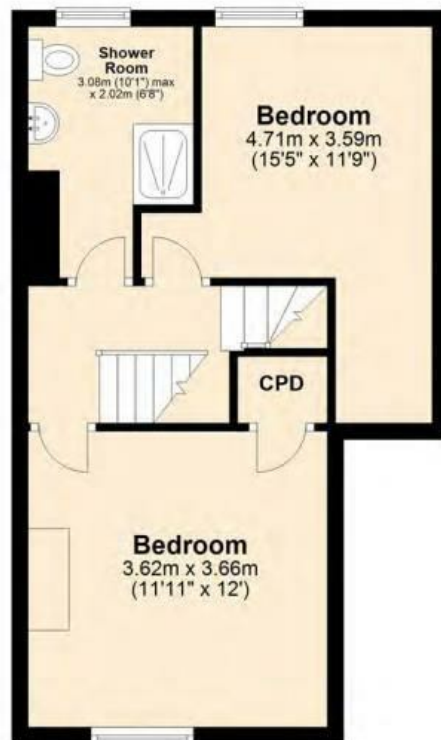
## Ground Floor

Approx. 36.1 sq. metres (388.4 sq. feet)



## First Floor

Approx. 37.5 sq. metres (403.9 sq. feet)



## Second Floor

Approx. 17.9 sq. metres (192.6 sq. feet)



Total area: approx. 91.5 sq. metres (984.9 sq. feet)

Energy Efficiency Rating		
	Current	Potential
Very energy efficient - lower running costs		
(92 plus) A		
(81-91) B		
(69-80) C		
(55-68) D		
(39-54) E		
(21-38) F		
(1-20) G		
Not energy efficient - higher running costs		
England & Wales		
EU Directive 2002/91/EC		

## DIRECTIONS

## CONTACT

8-10 Broomhall Road  
Sheffield  
S10 2DR

E: [info@taptonestates.co.uk](mailto:info@taptonestates.co.uk)  
T: 0114 268 3325  
[www.taptonestates.co.uk](http://www.taptonestates.co.uk)

