

Rolfe East



Greenford Avenue, Hanwell, W7 1AD

£2,200

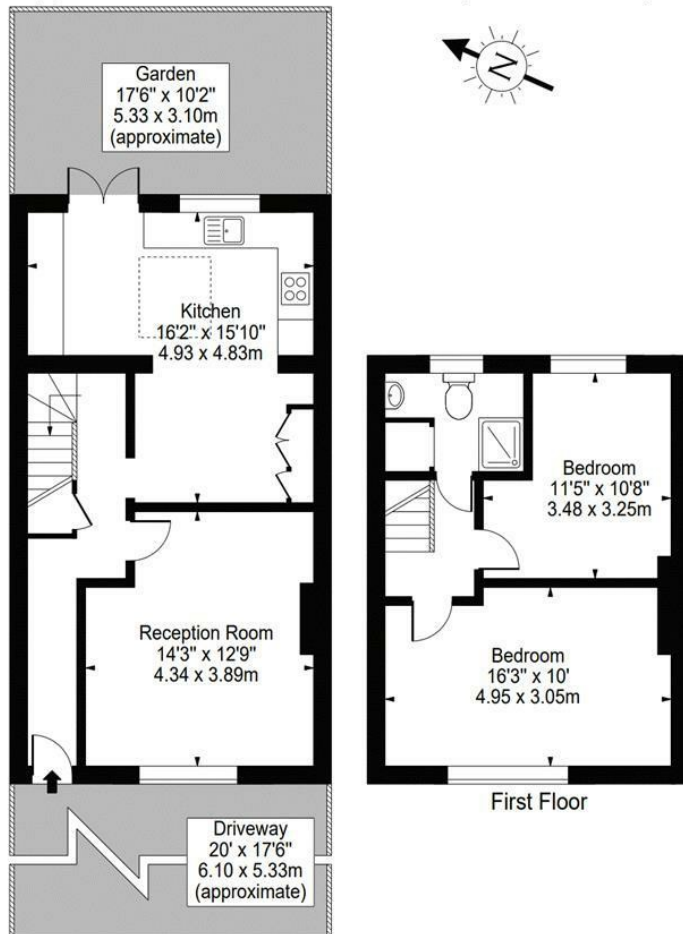
- Available Straight Away
- Unfurnished
- Refurbished house
- Private Rear Garden
- Two bedrooms
- Off street parking

289 Northfield Avenue, Ealing, W5 4XB
020 8579 1111

northfieldslettings@rolfe-east.com
<https://www.rolfe-east.com/>

Greenford Avenue, W7

Approx. Gross Internal Area 848 Sq Ft - 78.78 Sq M



Ground Floor
For Illustration Purposes Only - Not To Scale Floor Plan by Mira Nikolova Photography
This floor plan should be used as a general outline for guidance only and does not constitute in whole or in part an offer or contract.
Any intending purchaser or lessee should satisfy themselves by inspection, searches, enquiries and full survey as to the correctness of each statement.
Any areas, measurements or distances quoted are approximate and should not be used to value a property or be the basis of any sale or let.

Viewings

Viewings by arrangement only.
Call 020 8579 1111 to make an appointment.

Council Tax Band

D

EPC Rating:

C

