

Rolfe East



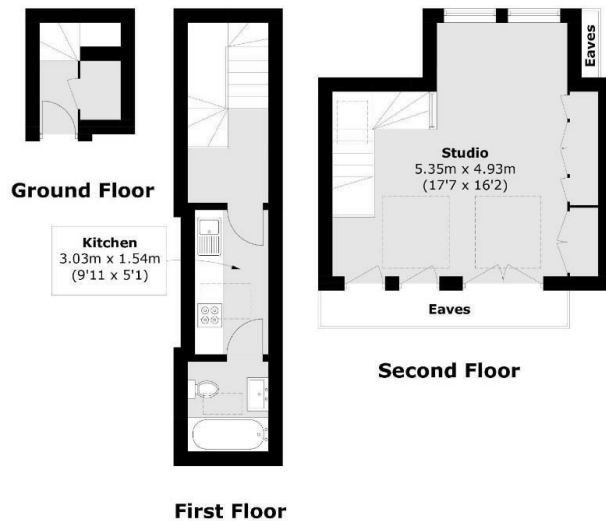
Northcote Road, Twickenham, TW1 1PA

£260,000

- CHAIN FREE SALE
- SPACIOUS STUDIO APARTMENT
- LOCATED IN THE HEART OF ST MARGARETS
- 0.5 OF A MILE FROM ST MARGARETS STATION
- OVER 40m2
- TOP FLOOR (2nd)

289 Northfield Avenue, Ealing, W5 4XB
020 8579 1111

northfields@rolfe-east.com
<https://www.rolfe-east.com/>



Total area (approx.): 42.8 sq. m (460.6 sq. ft.)
(Excluding Eaves)

Directions

Viewings

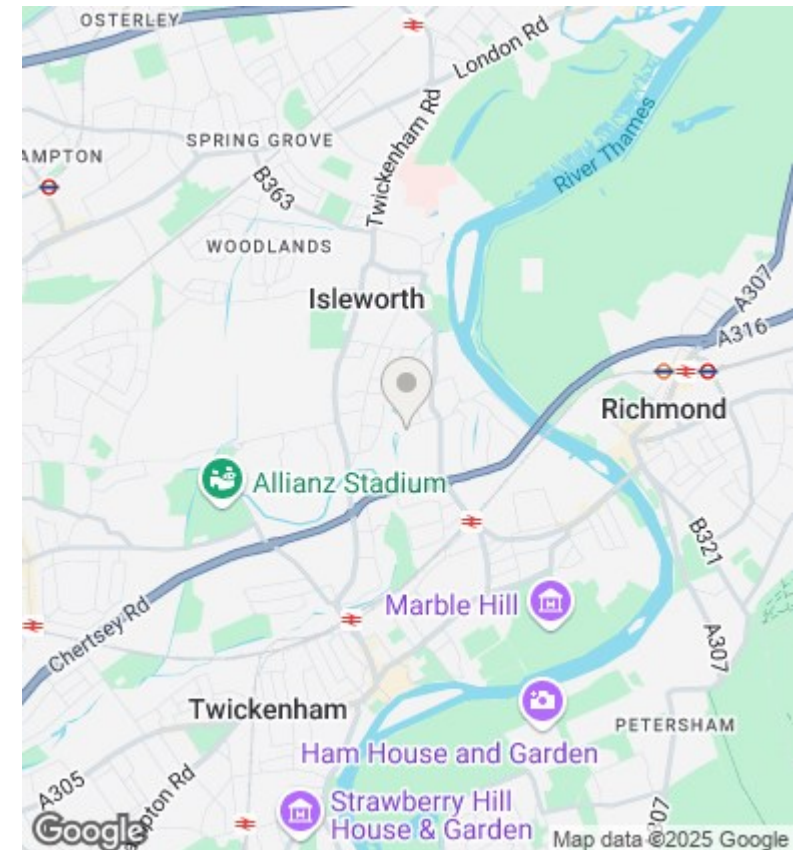
Viewings by arrangement only. Call 020 8579 1111 to make an appointment.

Council Tax Band

C

EPC Rating:

E



Energy Efficiency Rating		
	Current	Potential
Very energy efficient - lower running costs		
(92 plus) A		
(81-91) B		
(69-80) C		70
(55-68) D		
(39-54) E	45	
(21-38) F		
(1-20) G		
Not energy efficient - higher running costs		
England & Wales		EU Directive 2002/91/EC