

Rolfe East



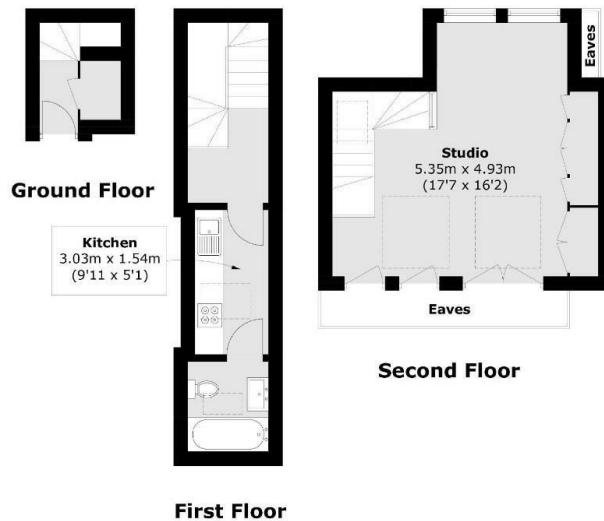
Northcote Road, Twickenham, TW1 1PA

£260,000

- CHAIN FREE SALE
- SPACIOUS STUDIO APARTMENT
- LOCATED IN THE HEART OF ST MARGARETS
- 0.5 OF A MILE FROM ST MARGARETS STATION
- OVER 40m2
- TOP FLOOR (2nd)

289 Northfield Avenue, Ealing, W5 4XB
020 8579 1111

northfields@rolfe-east.com
<https://www.rolfe-east.com/>



Total area (approx.): 42.8 sq. m (460.6 sq. ft.)
(Excluding Eaves)

Directions

Viewings

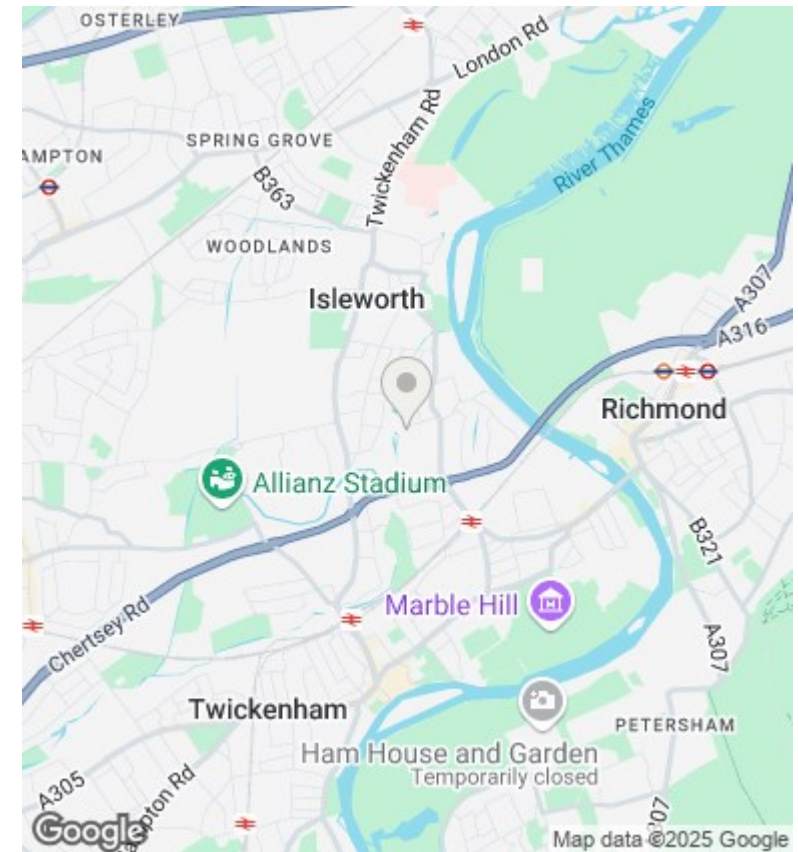
Viewings by arrangement only. Call 020 8579 1111 to make an appointment.

Council Tax Band

C

EPC Rating:

E



| Energy Efficiency Rating | | |
|---|---------|-------------------------|
| | Current | Potential |
| Very energy efficient - lower running costs | | |
| (92 plus) A | | |
| (81-91) B | | |
| (69-80) C | | 70 |
| (55-68) D | | |
| (39-54) E | 45 | |
| (21-38) F | | |
| (1-20) G | | |
| Not energy efficient - higher running costs | | |
| England & Wales | | EU Directive 2002/91/EC |