

Rolfe East



Lawrence Road, W5

Asking Price £899,950

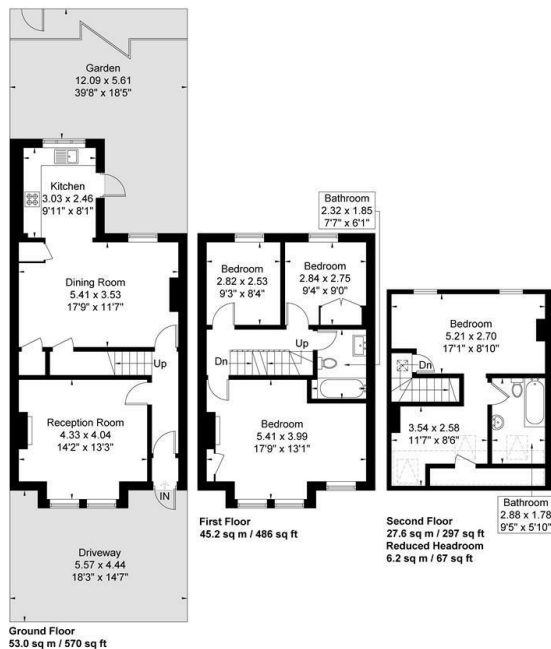
- CHAIN FREE SALE
- SUPER LIVING SPACE
- SOUGHT AFTER SCHOOLS NEARBY
- FOUR BEDROOMS
- CLOSE TO PICCADILLY LINE STATIONS
- EXCELLENT FAMILY HOME
- TWO BATHROOMS
- WELL PRESENTED FAMILY HOME

289 Northfield Avenue, Ealing, W5 4XB
020 8579 1111

northfields@rolfe-east.com
<https://www.rolfe-east.com/>

Lawrence Road

Approximate Gross Internal Area = 125.8 sq m / 1353 sq ft
Reduced Headroom = 6.2 sq m / 67 sq ft
Total = 132 sq m / 1420 sq ft



Although every attempt has been made to ensure accuracy, all measurements are approximate.
The floorplan is for illustrative purposes only and not to scale.
© www.perspective.co.uk

Viewings

Viewings by arrangement only. Call 020 8579 1111 to make an appointment.

Council Tax Band

E

EPC Rating:

